

Carbon sequestration associated to the land-use and land-cover changes in the forestry sector in Southern Brazil

Carlos C. Ronquim^{*a}, Ramon F. B. Silva^b, Eduardo B. de Figueiredo^c, Ricardo O. Bordonal^d,
Antônio H. de C. Teixeira^a, Thomas C. D. Cochanski^a, Janice F. Leivas^a

^aEmbrapa Monitoramento por Satélite, Campinas, SP, Brazil; ^bUniversity of Campinas, Campinas, SP, Brazil; ^cSão Paulo State University, Jaboticabal, SP, Brazil; ^dBrazilian Bioethanol Science and Technology Laboratory, Campinas, SP, Brazil

ABSTRACT

We studied the Paraíba do Sul river watershed, São Paulo state (PSWSP), Southeastern Brazil, in order to assess the land use and cover (LULC) and their implications to the amount of carbon (C) stored in the forest cover between the years 1985 and 2015. The region covers an area of 1,395,975 ha. We used images made by the Operational Land Imager (OLI) sensor (OLI/Landsat-8) to produce mappings, and image segmentation techniques to produce vectors with homogeneous characteristics. The training samples and the samples used for classification and validation were collected from the segmented image. To quantify the C stocked in aboveground live biomass (AGLB), we used an indirect method and applied literature-based reference values. The recovery of 205,690 ha of a secondary Native Forest (NF) after 1985 sequestered 9.7 Tg (Teragram) of C. Considering the whole NF area (455,232 ha), the amount of C accumulated along the whole watershed was 35.5 Tg, and the whole *Eucalyptus* crop (EU) area (113,600 ha) sequestered 4.4 Tg of C. Thus, the total amount of C sequestered in the whole watershed (NF + EU) was 39.9 Tg of C or 145.6 Tg of CO₂, and the NF areas were responsible for the largest C stock at the watershed (89%). Therefore, the increase of the NF cover contributes positively to the reduction of CO₂ concentration in the atmosphere, and Reducing Emissions from Deforestation and Forest Degradation (REDD+) may become one of the most promising compensation mechanisms for the farmers who increased forest cover at their farms.

Keywords: Remote sensing, Forestry dynamics, Native forest, *Eucalyptus*, Paraíba do Sul River watershed.

1. INTRODUCTION

Land-use and land-cover (LULC) changes occur faster at the tropics, where an unbalance between deforestation and regrowth of secondary forests has significant consequences to the global carbon cycle [1]. Among the tropical countries, Brazil has the highest deforestation rates, and has released nearly 1.6 Gt (gigatonne) CO₂eq (carbon dioxide equivalent), to the atmosphere in 2014, mostly due to land-use change, especially the cutoff of native forests and their replacement by pastures, which is the main responsible for greenhouse gas emissions (GHG), contributing with 32.7% or 0.5 Gt CO₂eq of the total emission [2].

Due to the importance of the forests in the global carbon cycle, researchers have been increasingly interested in the loss of forest cover and in the carbon gain potential of secondary-forest regeneration [3, 4]. Studies on *Atlantic forest* fragments are recent and poorly understood [5, 6, 7]. The long process of deforestation and forest degradation, as well as the diversity of plant formations associated with strong fragmentation in different sizes and forms make carbon stock estimations for *Mata Atlântica's* forest formations imprecise without a predictable pattern [7].

The *lato sensu* Atlantic Forest is a biodiversity mosaic composed of several types of vegetation distributed along 27 latitude degrees at the South hemisphere, and under strong variations in altitude, longitude, edaphic and climatic conditions [8]. As a true hotspot, the Brazilian Atlantic Forest features exceptional biodiversity levels, but its forests now cover only 14.5% of their original range [9], and are distributed mainly across 245,173 small fragments with an average size of 64 ha and some wide, continuous forest areas [10].

Remote Sensing for Agriculture, Ecosystems, and Hydrology XVIII, edited by
Christopher M. U. Neale, Antonino Maltese, Proc. of SPIE Vol. 9998, 99981T
© 2016 SPIE · CCC code: 0277-786X/16/\$18 · doi: 10.1117/12.2242094

*carlos.ronquim@embrapa.br; phone +55 19 3211-6200; fax: +55 19 3211-6222

Proc. of SPIE Vol. 9998 99981T-1

One of the challenges presented by the Atlantic Forest biome is that of better understanding the forest's transition processes. Some Atlantic Forest regions became progressively degraded, probably beyond their resilience threshold, while other regions face a forest transition phase as a result of regeneration dynamics that exceed the deforestation rate [11, 12, 13].

At the Paraíba do Sul watershed portion within the limits of the Brazilian state of São Paulo (PSWSP), located within the Atlantic Forest, wide areas are predominantly covered by pastures featuring some degree of degradation [13]. *Eucalyptus*-based forestry was the agricultural industry's branch with strongest economical and technical development, making a strong contrast with milk farming, which has been decreasing its production since the 1980s [12]. Even though PSWSP's area is dominated by extensive pastures, *Eucalyptus* crop and natural regrowth of secondary native forests have spread along the whole PSWSP over the last decades [13].

The secondary native-forest fragments became important landscape components in the region's land-use mosaic. In 2011, they already answered for about 50% of the PSWSP's forest cover [13]. The regrowth of secondary tropical forests accumulates carbon in the aboveground biomass, partially compensating the carbon emissions produced by deforestation, forest degradation, the burning of fossil fuels and other anthropic sources [4]. Therefore, the recovery of secondary forests may play an important role in climate change mitigation and in the recovery of biodiversity and other ecosystem functions [4].

From the environmental services point of view, natural regeneration may play an essential role in the reduction of restoration costs [14], since forest recovery (e.g., acquisition of seedlings produced in plant nurseries, planting and management of the planted area for at least two years) costs about US\$ 5,000,00 ha⁻¹ [15]. By making the prices of environmental services more evident, new tools may be developed and used to promote conservation actions associated with income for the rural producer, such as Reducing Emissions from Deforestation and Forest Degradation (REDD+).

In this context, estimating net anthropic GHG emissions caused by LULC is crucial, and remote sensing techniques play an essential role for providing some of the most precise means to assess the magnitude and patterns of changes in land cover conditions over a period of time [16]. The objective of this work was to evaluate the dynamics of land use and land cover change with emphasis on the variation of forest cover and how it may affect the carbon stocks available in the aboveground live biomass (AGLB) of native forests (NF) and planted *Eucalyptus* forests (EU) over a 30-year period at PSWSP.

2. MATERIAL AND METHODS

Our study was performed using a land-use and land-cover (LULC) mapping made in 2015, carbon stock (AGLB) quantification using an indirect method, and the application of literature-based data. Areas featuring native forest since 1985 and maintained during the 30-year period of the mapping were classified as primary forests, and areas where the native forest recovered along the 30-year period were considered secondary succession. The historical LULC data were retrieved from a previous research [13].

2.1. Study area

PSWSP is a region that covers an area of 11,395,975 ha (Figure 1), which supports a population of over 2 million people and produces 4.5% of the Gross Domestic Product (GDP) of the State of São Paulo [17]. The physical landscape is determined by two major geomorphological compartments: the mountainous areas with altitudes up to 2,000 m above sea level, and convex-concave hills that present lower unevenness of about 200 m. The region is influenced by the Tropical Atlantic and Polar air masses, which cause cold fronts, responsible for part of the annual rainfall average of 1,700 mm, mainly concentrated between December and March [18].

In the past, the region was important for coffee and milk productions, and today it stands out in industry, particularly technology and aerospace. With low participation from the rural economy in the region's Value of Agricultural Production – VAP [13], the land use that grew the most in recent decades was the *Eucalyptus* crop, mainly for production and international trade of pulp and paper [12]. The landscape of the Paraíba do Sul river watershed is composed by a matrix of pastures with patches of native Atlantic Forest remnants and *Eucalyptus* crop [13].

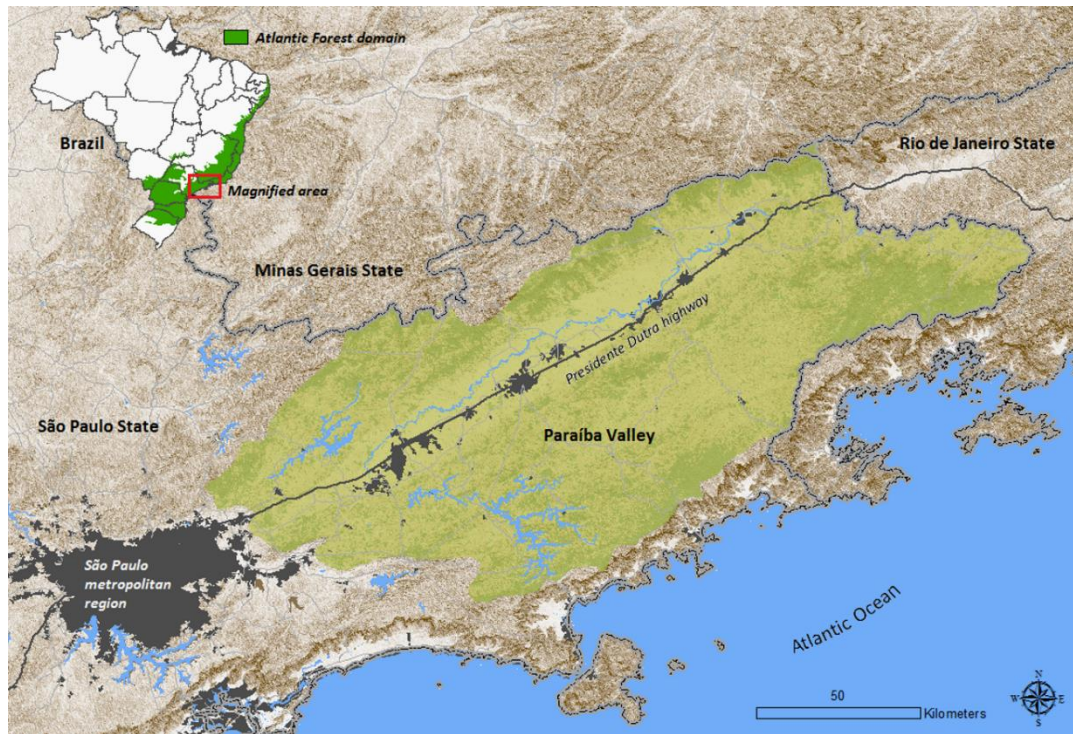


Figure 1. Study region, the Paraíba do Sul river watershed at the state of São Paulo (PSWSP), and the regional context.

2.2. Land-use and land-cover mapping

The LULC mapping used a set of two Landsat-8 images (*Operational Land Imager – OLI*), scenes 218/76 of January 19, 2015, and 219/76 of August 03, 2015, cloud free. The two Landsat-8 images covered the entire study area of the PSWSP (Figure 1). The LULC mapping used was made by Silva et al. [13] using a set of Landsat-5 images (*Thematic Mapper – TM*) for the years of 1985, 1995, 2005 and 2011. The mapping scheme defined for the present research follows the same LULC classes used in the previous work [13]: Native Forest (NF), Pasture (PA), Abandoned Pasture (AP), *Eucalyptus* crop (EU), Agriculture (AG), Built-up Area (BA), Bare Soil (BS) and Water (WA).

The images available at the GloVis U.S. Geological Survey platform were retrieved using Level 1T processing [19]. The image pre-processing consisted of atmospheric correction using the Fast Line-of-sight Atmospheric Analysis of Hypercube (FLAASH) algorithm [20]. After the atmospheric correction, the images were segmented using the parameters: Segment Algorithm, Edge; Scale Level, 30; Merge Algorithm, Full Lambda Schedule; and Merge Level, 0 (implemented in ENVI 5.1 Example Based Feature Extraction). A Texture Kernel Size filter was maintained as a 3 x 3-window size.

The training data were collected using visual interpretation of the high spatial resolution images available in Google Earth. For each scene, we selected a different number of random samples of each land use and land cover class, since each Landsat-8 image used for mapping covered different proportions of the study area – scene 219/76 covered approximately 35% of the Paraíba do Sul river watershed in São Paulo state, while scene 218/76 covered 65%. Thus, 1,000 samples were collected for each class of the LULC classification to assess the global accuracy for the scene 218/76, and 200 samples of each class for scene 219/76. Based on the total training data for each Landsat-8 image, we randomly assigned a set of 90% for training and classification procedures, and the remaining 10% for the accuracy assessment [21].

For the classification procedure, we used the Maximum Likelihood supervised algorithm. For the refinement of the classification procedure (over the LULC map of 2015), a majority filter was applied with a window size of 3 x 3 pixels to reassign an LULC class to the center of the 3 x 3 window [22]. The classification results of the two Landsat-8 scenes

(218/76 and 219/76) were mosaicked to generate the LULC map of the PSWSP, 2015. After mosaicking the mapping results of the two scenes, an independent set of 100 samples for each LULC class was selected by visual interpretation of Google Earth's high spatial resolution images for accuracy assessment [21] of the final LULC map – LULC classes of PSWSP, 2015.

2.3. Carbon quantification

In order to show native forest areas' potential to accumulate carbon in the aboveground live biomass (AGLB), we produced a table featuring the amounts of carbon stocked in the AGLB of native forests found in several papers published about Atlantic Forest formations at the Brazilian South and Southeast regions. These papers featured studies on different physiognomies (Montane Moist Forest – MMF and Seasonal Semideciduous Forest – SSF), at different succession stages, primary or secondary. PSWSP features one of the highest remnant-vegetation indices in the state of São Paulo. At the valley's lowest areas, there are mainly SSF remnants, while areas encompassing the Bocaina and Mantiqueira mountain chains and their catchments of the PSWSP are composed by MMF remnants [23].

The values of carbon stocked in the forest phytomass of native forests and *Eucalyptus* planted forests are the result of the arithmetic average of values obtained in studies published on native forests, and are presented in Mg ha^{-1} (megagram per hectare). It is known that the atomic weights of C is 12 and of O (oxygen) is 16, therefore 1.0 Mg of C corresponds to 3.66 Mg of CO_2 . Thus, the amount of CO_2eq (carbon dioxide equivalent), was determined by multiplying the C value by 3.66 (conversion factor obtained by the ratio between the O and C atomic masses).

The stages of the forest fragments of native forests were divided into primary native forests and secondary native forests. The values of carbon stocked in AGLB in primary forests were obtained from 13 remnants, and in secondary forests, from 23 remnants. All remnants belong to the Atlantic forest biome and are located in Southeast and South Brazil. To obtain the carbon stock by area ratio, we used an indirect estimate and multiplied the total area (primary and secondary forest) of native forest cover at PSWSP by the literature-based average carbon stocked in AGLB in the phytomass of primary and secondary forest remnants informed in Mg ha^{-1} of C.

For the *Eucalyptus* planted forests, we used the average value found in nine papers, all referring to studies made at different locations in Southeast Brazil, and the value of carbon stocked in AGLB was informed in Mg ha^{-1} of C. Since the age of these forests ranges from zero to seven years, when the trees are harvested for cellulose production, we adopted an average value of 3.5 years as reference for the value of carbon accumulated in a hectare. Thus, we multiplied by the average carbon stocked in AGLB – $\text{Mg C ha}^{-1}\text{year}^{-1}$ obtained in the literature.

2.4. Economy and sustainability

The variation of the Value of Agricultural Production (VAP) for 2015 was obtained on the website: <http://www.iea.sp.gov.br/out/bancodedados.html> published by the Brazilian Institute of Agricultural Economics (*Instituto de Economia Agrícola*, IEA) [24], which annually informs the result of the estimate of the VAP by regions of state of São Paulo.

3. RESULTS AND DISCUSSION

3.1. Land-use and land-cover changes (LULC)

The LULC maps produced for PSWSP identified eight land uses in 1985 and 2015: areas under no human influence, encompassing native forests that were divided into primary native forests that existed in 1985 and secondary native forests areas that arose after 1985; areas created by human influence (i.e., pasture, *Eucalyptus* crop, agriculture, bare soil and built-up areas); and water areas, such as rivers or artificial lakes (Figure 2). The classification shown in the map for the year 2015 featured a Kappa index of 0.8500 and a global accuracy of 87.1429%.

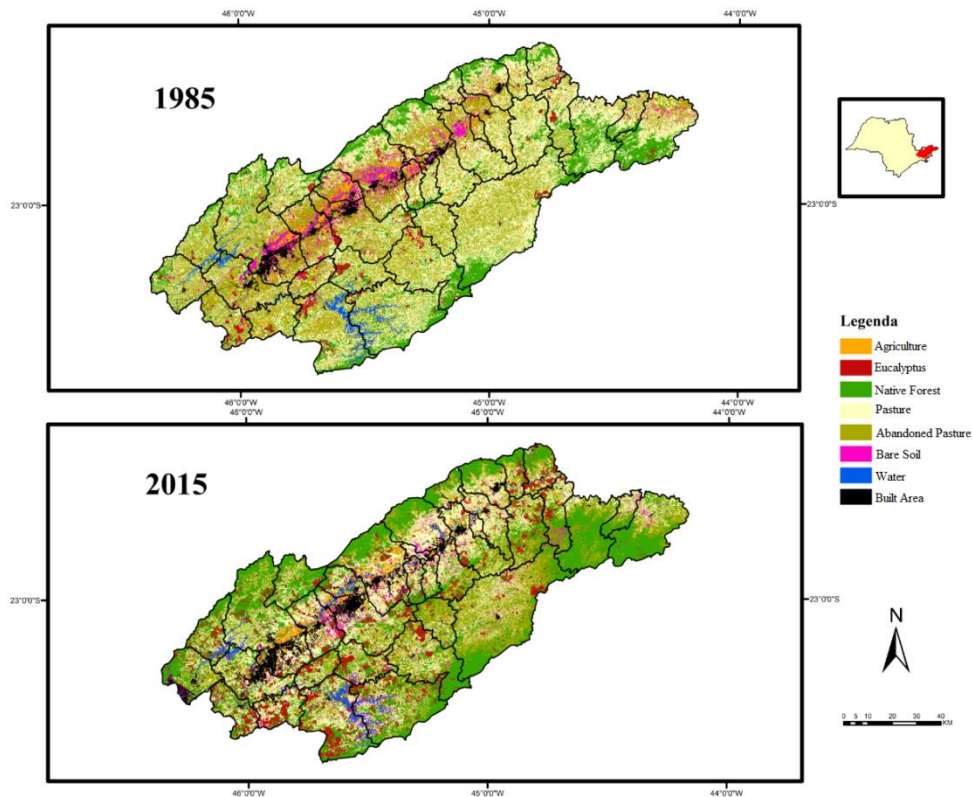


Figure 2. Maps showing land-use and land-cover dynamics of Native Forest (NF), Pasture (PA), Abandoned Pasture (AP), *Eucalyptus* (EU), Agriculture (AG), Built-up Area (BA), Bare Soil (BS) and Water (WA) areas at the PSWSP in 1985 and 2015.

The pastures, for beef and milk production, are still the main land cover (651 thousand hectares). However, these areas have decreased 32% over the last 30 years, and nearly half of the pastures still available (around 40%; Figure 3) show regrowth of native plant cover at different stages – the so called "dirty pasture", which is no longer managed and may regenerate into new secondary native forests over the years.

Pasture areas near urban centers are being replaced by real estate projects, such as residential condominiums and rural properties dedicated to leisure, as well as by *Eucalyptus* crop. This process has driven the region to its current scenario, in which 67.4% of the area is dedicated to anthropic uses (Figure 3). Areas featuring *Eucalyptus* crop grew from 35,214 ha (2.5% of the PSWSP area) in 1985 to 113,587 ha (8.1% of the PSWSP area) in 2015 (Figure 3).

Between 1985 and 2015, the native forest areas grew from 249,542 ha (considered as primary forests) to 455,232 ha, an increase of 83% in areas covered by secondary native forests. This growth occurred mainly over areas previously used as pastures. Native forests cover 32.6% of the PSWSP in 2015 in comparison to 17.9% in 1985 (Figure 3), a secondary forest gain of 205,690 ha. This native forest cover occurs mostly in areas with slopiness above 20% (Table 1). Despite its high fragmentation rate, PSWSP's area displays over twice the forest cover shown by the Brazilian Atlantic forest in proportion, since Atlantic forest currently features only 14.5% of its original forest cover [24].

The smaller investments made by farmers contribute to the decrease in the management of areas which are less suitable for use as pastures, such as mountain tops and steeper hills, as well as the slopes of hills facing South, which are less favorable for pasture development [12, 13]. The abandonment of pasture areas which are more restraining to the cattle and to mechanized agriculture ends up favoring the regrowth of the native tree cover, which after its consolidation as a successional forest becomes protected under the "Brazilian *Mata Atlântica* law" (Law no. 11248 from 2006), that prevents deforestation and favors the recovery of the forest cover.

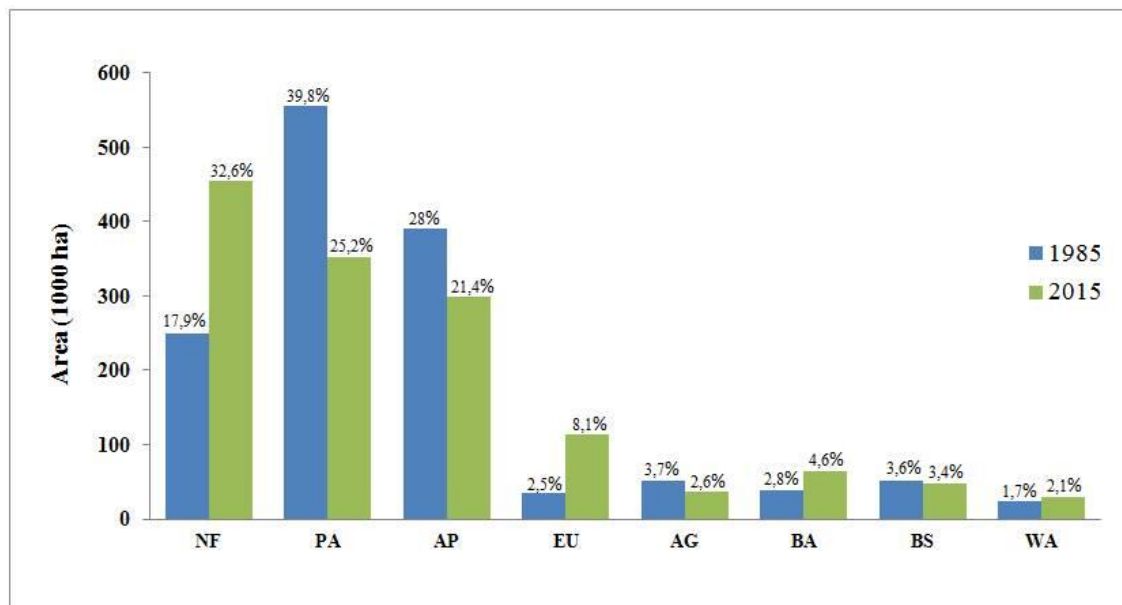


Figure 3. Land-use and land-cover change values in hectare (ha) and in percentage (%), in PSWSP's Native Forest (NF), Pasture (PA), Abandoned Pasture (AP), *Eucalyptus* crop (EU), Agriculture (AG), Built Area (BA), Bare Soil (BS) and Water (WA) areas in 1985 and 2015.

The conservation and restoration of the PSWSP's plant cover are important because it is inserted in the *Atlantic forest* biome, which is among the 25 most important diversity hotspots, and became an archipelago of small "forest islands" surrounded by a matrix that might be formed by agriculture, pasture, *Eucalyptus* crop or urban areas [8, 10]. Brazilian Atlantic forest has exceptional biodiversity levels, but the forest fragments are often too small to provide for and host many species [6, 10, 14]. *Mata Atlântica's* importance goes beyond its rich and diverse biota, and encompasses a wide set of relevant ecosystem services provided directly and indirectly to human wellbeing [5, 6, 7, 8, 14].

PSWSP's area is facing a phenomenon called "forest transition", which consists of a regrowth of the native forest over the current agricultural use, and the factors that contribute to this restoration scenario are the population awareness, access to information, international protocols, environmental law, and rural-urban migration [12, 13]. The irregular relief of the whole PSWSP area may be considered, even if indirectly, the main factor behind this whole process. Over 50% of the PSWSP's area, calculated as 1,395,975 ha, features slopes with steepness degrees above 20% (Table 1). The irregularity of the terrain makes crop management more difficult, and agriculture does not provide a satisfactory economic return. Since the lands are not suitable for agriculture, crop competition over areas does not happen at the PSWSP, which is a characteristic of the LULC dynamics in the whole inland of the state of São Paulo, driven especially by sugarcane [25]. Not even, extensive pastures used for beef and milk productions, which are a low-cost investment opportunity for the region's farmers, are competitive at the PSWSP's sloppy areas. This is seen on the stagnation of the PSWSP's milk productivity since the 1980s [13]. The low income provided by the milk industry, the strict quality standards of dairy factories, difficulties to find and hire qualified labor, among other reasons, make it harder for the rural producers to maintain their activities.

Although the areas of most of the other watersheds in the state of São Paulo are under the same restrictive conditions of the PSWSP – environmental laws, market influence, rural-urban migration, labor scarcity, among others – elsewhere there was no regrowth of the native plant cover. Sugarcane crops depend highly on mechanization, which limits their expansion over sloppy terrain [25, 26], such as that of the PSWSP.

Table 1. Declivity classes in Native Forest (NF), Pasture (PA), Abandoned Pasture (AP) and *Eucalyptus* crop areas at PSWSP in 1985 and 2015.

Declivity (%)	Area		Native Forest (%)		Pasture (%)		Abandoned (%)		<i>Eucalyptus</i> (%)	
	(ha)	(%)	1985	2015	1985	2015	1985	2015	1985	2015
	0 to 3	12,789	0.9	1.2	2.4	3.9	7.5	8.8	5.2	3.6
3 to 8	180,286	12.9	5.7	6.9	10.7	14.5	16.4	13	11.2	9.7
8 to 20	496,802	35.6	27.5	29.6	36.7	41.2	43.7	40	41.2	40.6
20 to 45	526,180	37.7	52.6	50.6	43.8	34.6	29.9	38.2	41.3	44.4
45 to 75	163,229	11.7	12.2	9.9	4.7	2.1	1.1	3.4	2.7	2.5
> 75	16,689	1.2	0.8	0.6	0.3	0.1	0.1	0.2	0.1	0.0
Total	1,395,975	100	100	100	100	100	100	100	100	100

Atlantic Forest areas in the state of Alagoas, Northeast Brazil, show the opposite situation described by the forest transition theory. There, rural-urban migration coincided with a deforestation trend because subsistence agriculture was replaced by large sugarcane and soybean crops [27]. The recent increase in young secondary forests over sugarcane landscapes in the state of São Paulo is likely the result of environmental planning efforts to honor the Brazilian Forest Code [25].

Another important aspect is the access to technologies. Only producers who use technologies are able to produce income in their farms [28]. Contrary to what happened in the past, access to land became a less important variable in comparison to technology, which surpassed the labor and land variables in the ranking of sources for agricultural growth [28]. The absence of large agribusiness companies or their investments in their own crops or in partnering producers at the PSWSP has left the small and medium producers with less capital and few resources, rendering them excessively frail to be able to integrate the agricultural industry product chains. Without access to the best technology available, even large-scale producers end up reducing their production area or stopping their activities altogether.

Over these 30 years, pastures have also made way for *Eucalyptus* plantation, which has grown from 35,214 ha (2.5%) to 113,587 ha (8.1%) (Figure 3). Although *Eucalyptus*'s representativeness as a land-use class at the PSWSP is low, *Eucalyptus* plantations have caused polemics within the local society, worried about the environmental impacts that this monoculture may produce. Part of the local community, not necessarily backed up by technical knowledge, condemns *Eucalyptus* crop stating that this exotic genus subtracts native trees, competes against food crops, influences regional temperature, favors rural-urban migration, changes the natural landscape and creates huge "green deserts" [12, 29]. However, most of the *Eucalyptus* plantation have replaced pasture areas that were also artificially inserted, i.e., exotic anthropic landscapes.

Occupying some areas with *Eucalyptus* crop will not provide all the ecosystem services or deliver all the ecosystem functions of a preserved native forest, but will deliver part of it [12]. Many of the changes caused by *Eucalyptus* may benefit the environment, especially when replacing pastures, particularly degraded pastures. Depending on the management practice adopted, the age of the crop, the location, and the size of the plot reforestations may promote environments which are favorable for the locomotion of forest animals [30], and the mitigation of temperature extremes by increasing evapotranspiration [31]. Forestry companies currently seek environmental certifications, which require satisfying demands and international standards. The adjustments involve recomposing 20% of legal reserve (RL) areas and permanent preservation areas (APP) to abide to environmental laws. The farms featuring *Eucalyptus* crop at the PSWSP increased the amount of native forest areas [32].

Eucalyptus crop is among the few commercial crops that may be explored at PSWSP despite the steep slopiness of the topography. Nearly half of the *Eucalyptus* plantation areas are located in regions with slopiness above 20% (Table 1), which are not suitable for the mechanized management of most other commercial crops. Mechanization development currently enables planting and harvesting *Eucalyptus* in extremely sloppy terrains, which makes it a viable activity at the PSWSP. However, the higher costs of the commercial management of *Eucalyptus* crop at the PSWSP hint at a break in

their expansion. Fibria, a forestry company that explores these crops in its own lands and in partnership with farmers, informed that its expansion policy for the forestry industry at PSWSP is currently stagnated and that the company will only expand its exploration areas on third party properties located very near their plant.

3.2. Carbon sequestration

The average value of carbon stocked in the AGLB obtained from the literature was $103.4 \pm 23.8 \text{ Mg C ha}^{-1}$ (mean \pm SE) for primary native forests, and $47.0 \text{ Mg C ha}^{-1} \pm 22.1$ (mean \pm SE) for secondary native forests. For the areas featuring forests until 1985 (249,542 ha), we assumed that the AGLB accumulated $103.4 \text{ Mg C ha}^{-1}$, and therefore areas featuring primary native forests sequestered 25.8 Tg C. Based on the recovery of 205.7 thousand hectares of native forests over the last 30 years and considering the average values of carbon stocked in AGLB obtained from the literature ($47.0 \text{ Mg C ha}^{-1}$), the secondary forests have sequestered 9.7 million Tg C from the atmosphere. Therefore, the amount of C accumulated all over the PSWSP was of 35.5 Tg C or 129.5 Tg CO₂eq during the period of 1985 until 2015.

If the C accumulated in the soil and litter was taken into account, C accumulation per hectare would be much higher, since the amounts of carbon stocked in the soil layers of Atlantic Forest remnants in Southeast Brazil are even larger than the carbon stocked in the AGLB [5]. Carbon stored in the soil layers of forest remaining Atlantic forest of southeastern Brazil can reach over 170 Mg C ha^{-1} [5].

The values of C accumulated in AGLB of several native Atlantic Forest formations in Southeast and South Brazil surveyed in the literature varied from 17.9 Mg ha^{-1} in secondary native forests to 165.0 Mg ha^{-1} in primary native forests (Table 2). Secondary native forests are often fragmented and accumulate less C by area (Table 2), because fragmentation changes the plants' capacity to absorb CO₂ and therefore to store C in the biomass [10]. The C stock is influenced by the interaction of multiple landscape factors, such as higher mortality of trees within the first 100 m of the forest's margin [10], proximity to the margin, kind of matrix, and forest age [33].

Currently, over half of the world's tropical native forests are under recovery [3]. The secondary forests arising at PSWSP show strong fragmentation, caused by a long period of anthropic activities. This condition seems to be standard for the whole Atlantic Forest, which spreads over 245,173 small fragments with an average size of 64 ha [10].

However, these secondary fragmented forests play a crucial role in tropical landscapes modified by human activities. They show high carbon sequestration rates, and offer a set of ecosystem services that are intimately related to the resilience to forest degradation, such as the capacity of rapidly recovering after a disturbance and of returning to the original pre-deforestation state [3]. The carbon sequestered in AGLB by these secondary native forests partially compensates carbon emissions produced during the deforestation, burning of fossil fuels and other anthropic sources [4]. This nature-based solution may be considered an effective low-cost mechanism for carbon sequestration, particularly in tropical regions [4].

The average value for carbon accumulation in AGLB obtained in the literature, which is based on researches made in Southeast Brazil for *Eucalyptus* crop (Table 3), was $11.1 (\pm 2.1) \text{ Mg ha}^{-1} \text{ year}^{-1}$. In 3.5 years (the average time of permanence for commercial crops, which varies from zero to seven years), the amount of C accumulated applied in our calculation was 38.9 Mg ha^{-1} . Therefore, *Eucalyptus* crop in the PSWSP (113,587 ha) has accumulated 4,419 Mg C or 4.4 Tg C until 2015. At the same PSWSP area, it was observed a higher amount of carbon in the native forest area than in the six-year-old *Eucalyptus* crop [34]. However, considering the average annual carbon increase (IMC), the native forest showed an IMC of $1.3 \text{ Mg C ha}^{-1} \text{ year}^{-1}$, which is smaller than that of the *Eucalyptus* area, with $8.5 \text{ Mg C ha}^{-1} \text{ year}^{-1}$ [34].

Table 2. Published papers of carbon stocks (Mg C ha⁻¹) in aboveground live biomass (AGLB) from Atlantic Forest inventories at different locations in South and Southeast Brazil.

Carbon stock Mg C ha ⁻¹	Successional stages	Forest Type	Location	Source
84.1	Primary	SSF	Barão de Cotegipe, RS	[35] Oliveira <i>et al.</i> , (2016)
85.1	Secondary	MMF	São Paulo, SP	[36] Barbosa, (2016)
101.1	Primary	MMF	São João do Triunfo	[37] Maas, (2015)
61.8	Secondary	SSF	Viçosa, MG	[38] Figueiredo <i>et al.</i> , (2015)
98.7	Primary	MMF	São João do Triunfo,	[39] Lipinski, (2015)
33.3	Secondary	MMF	Serra da Cantareira, SP	[40] Carvalho (2015)
20.8	Secondary	SSF	Pinheiral, RJ	[7] Dinis <i>et al.</i> , (2015)
61.8				
14.8	Secondary	MMF	Serra da Cantareira, SP	[33] Costa, 2015
105.7	Primary	MMF	Curitiba, PR	[41] Barreto <i>et al.</i> , (2014)
96.7	Primary	SSF	Ribeirão Grande, SP	[42] Carvalho <i>et al.</i> , (2014)
30.9	Secondary	MMF	Serra da Cantareira, SP	[43] Romitteli (2014)
17.9	Secondary	SSF	Caratinga, M G	[44] Gaspar (2014)
86.9	Secondary	SSF	Viçosa, MG	[45] Amaro <i>et al.</i> , (2013)
38.0	Secondary	SSF	Viçosa, MG	[46] Torres <i>et al.</i> , (2013)
77.5	Primary	MMF	General Carneiro, PR	[47] Mognon <i>et al.</i> , (2013)
35.5	Secondary	SSF	Pereira Barreto, SP	[48] Stucchi (2013)
36.5	Secondary	SSF	Caratinga, MG	[49] Souza <i>et al.</i> , 2012
75.2			Bom Jesus, MG	
89.5	Primary	MMF	General Carneiro, PR	[50] Watzlawick <i>et al.</i> , (2012)
94.3	Primary	SSF	Ubatuba, SP	[5] Vieira <i>et al.</i> , (2011)
126.7		MMF	S, L, Paraitinga, SP	
47.9	Secondary	MMF	General Carneiro, PR	[51] Amaral <i>et al.</i> , (2010)
19.5	Secondary	SSF	Viçosa, MG	[52] Ribeiro <i>et al.</i> , (2010)
76.7	Primary	MMF	Apiúna, SC	[53] Silveira (2010)
83.3	Primary	SSF	Viçosa, MG	[54] Ribeiro <i>et al.</i> , (2009)
45.4	Secondary	SSF	Cruzeiro, SP	[34] Coutinho (2009)
145.3	Primary	SSF	São Paulo, SP	[55] Velasco & Higuchi (2009)
65.9	Secondary	MMF	S, M, Madalena, RJ	[56] Cunha (2009)
68.4				
41.8	Secondary	SSF	Santa Tereza, RS	[57] Brun (2004)
65.4				
29.8	Secondary	SSF	Oratórios, MG	[58] Lima <i>et al.</i> , (2003)
165.0	Primary			
70.2	Secondary	MMF	General Carneiro, PR	[59] Sanquetta <i>et al.</i> , (2002)
28.8	Secondary			

*Montane Moist Forest (MMF), Seasonal Semideciduous Forest (SSF).

The future use of wood from *Eucalyptus* crop will determine the real amount of carbon fixed and for what period, since it may be used for several purposes and have different cutting cycles. The uses vary from immediate burning for bioenergy generation, cellulose production and furniture industry. In the first situation, the carbon immediately returns to the atmosphere but also can be considered as alternative to fossil fuel use. For furniture, it remains fixed to the wood for a longer time or a long live pool. At PSWSP, *Eucalyptus* reforestations are used mostly for cellulose production.

Table 3. Published papers of carbon stocks (Mg C ha⁻¹ year⁻¹) in aboveground live biomass (AGLB) for *Eucalyptus* crop at different locations in Southeast Brazil.

Carbon stock Mg C ha ⁻¹ year ⁻¹	Pool description	<i>Eucalyptus</i> Species	Location	Source
10.5	Aboveground	<i>Eucalyptus</i> spp	Viçosa, MG	[60] Brianezi <i>et al.</i> , (2014)
13.2	Above, belowground	<i>E. urograndis</i>	Jacarei, SP	[61] Bassanelli (2013)
9.1	Aboveground	<i>E. urograndis</i>	Turmalina, MG	[62] Santos <i>et al.</i> , (2012)
9.3	Aboveground	<i>E. grandis</i>	Itamarandiba, MG	[63] Rocha (2011)
14.2	Above, belowground	<i>Eucalyptus</i> spp	Centro-Leste, MG	[64] Gatto <i>et al.</i> , (2011)
8.5	Aboveground	<i>E. urograndis</i>	Cruzeiro, SP	[34] Coutinho (2009)
9.8	Aboveground	<i>E. grandis</i>	Guanhães, MG	[65] Silva <i>et al.</i> , (2008)
8.9	Above, belowground	<i>E. grandis</i>	Viçosa, MG	[66] Paixão <i>et al.</i> , (2006)
13.5	Above, belowground	<i>E. grandis</i>	B. do Riacho, ES	[67] Maestri <i>et al.</i> , (2004)

According to our study, the total amount of carbon sequestered in the whole PSWSP (NF+ EU) was 39.9 Tg C or 145.6 Tg of CO₂, and the NF areas were responsible for the largest C stock of the watershed (89%).

Brazil released about 1.6 billion tons of CO₂ (1.6 Gt CO₂eq) to the atmosphere in 2014 [2] and LULC is the main sector responsible for GHG emissions, and contributes with 32.7% (0.5 Gt CO₂eq or 472.6 million tons of CO₂eq) due to deforestation in the Amazon and Cerrado [2]. On the other hand, PSWSP is contributing to the increase of carbon sequestration from the atmosphere by means of land-use changes. Instead of losing forests to pasture areas, as it happens in Amazon, Cerrado and other watersheds in the state of São Paulo, there is an increase in secondary native forests over areas previously used as pastures at PSWSP.

The regeneration of tropical forests, aside from contributing to carbon sequestration, plays an important role in biodiversity conservation, in the increase of connectivity between fragmented landscapes, water regulation, nutrient cycling, and may provide other services, positively interfering on the local agricultural production by helping maintain pollinators, natural enemies, among others. Since the tree biomass of fragments is widely affected by the amount of surrounding forest, the connectivity may also have a strong influence on the recovery of carbon stocks [3, 4, 5, 6].

3.3. Economy and sustainability

Husbandry remains the main income generator of the region's agriculture. Despite the reduction in pasture areas, beef and milk production increased between 1985 and 2015 [24]. Beef production grew from 731 thousand to 2.9 million arrobas, and milk production jumped from 187 to 206 thousand liters, even with a smaller herd and area [24]. Index that measures the economic development of the main agricultural activities, the VAP of beef has been growing since the 1990s, and the activity is currently the one that contributes the most to the region's income (Figure 4). Milk production's participation in the VAP, on the other hand, has been decreasing and currently competes with the value of *Eucalyptus* crop for the second position in the rank of contributors to agricultural income at the PSWSP (Figure 4). Economically, *Eucalyptus*-based forestry featured the strongest technological development at the PSWSP. The VAP of *Eucalyptus* plantations in 2015 was about R\$163 million [24].

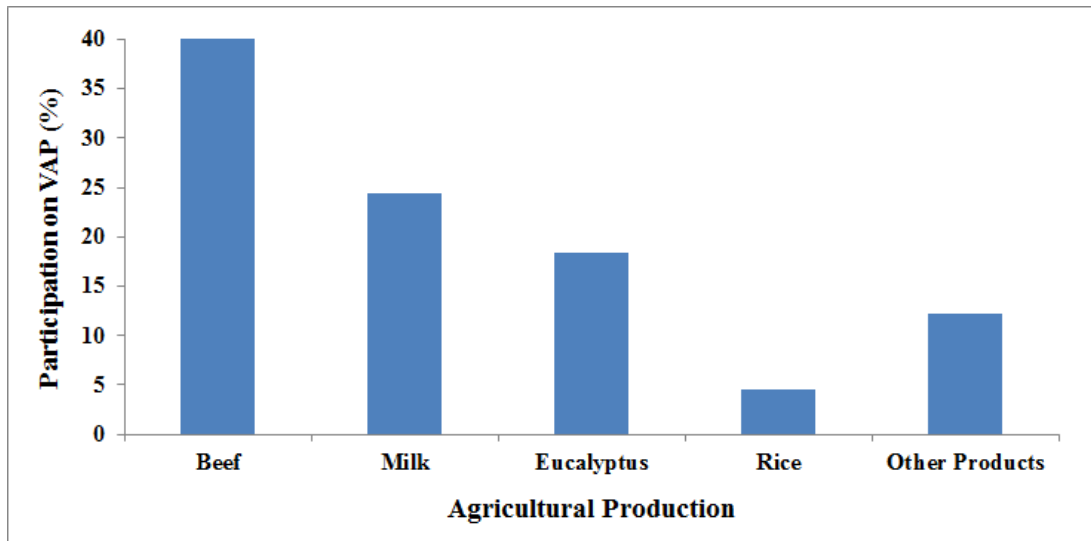


Figure 4. Percentage variation of the Value of Agricultural Production (VAP) at the Paraíba do Sul river watershed (PSWSP) in 2015 [24].

The potential capacity for carbon sequestration by the regeneration of secondary forests offers a significant opportunity for low-cost carbon sequestration at the tropics, while it simultaneously benefits biodiversity and the production of multiple ecosystem services, and should be explicitly incorporated into the commitments for carbon mitigation, both nationally and internationally [4]. From an economy point of view, natural regeneration may play an important role in reducing restoration costs. If the 205.7 thousand hectares of forests regenerated between 1985 and 2015 at the watershed were recovered by planting and managing seedlings produced in plant nurseries, the expenses along the whole watershed would be approximately US\$ 1.0 billion, taking into consideration the average costs of US\$ 5,000.00 ha⁻¹ for the acquisition, planting and management of seedlings/trees [15].

The United Nations already acknowledges the degradation of tropical forests as an important vector of CO₂ emission to the atmosphere, and incorporated degradation as one of REDD+ mechanisms. Soon REDD+ and other market mechanisms, such as payments for environmental services (PSA), may become one of the most promising compensation paths for rural producers that increased the amount of forest cover at their properties at PSWSP. PSA initiatives are underway at PSWSP and at different development stages. Two of them are propositions made by cities of the state of São Paulo (Guaratinguetá – SP and São José dos Campos – SP), and two others are articulated mainly by the *Coordenadoria de Biodiversidade e Recursos Naturais* (CBRN) at SMA, one involving the city of São Luiz do Paraitinga – SP, and the other one involving the whole Paraitinga river watershed (11 cities).

4. CONCLUSIONS

PSWSP's secondary forest fragments nearly doubled in size, especially on areas previously used as pastures from the period of 1985 to 2015. *Eucalyptus* plantation areas have increased over the last 30 years, but occupy only 8.1% of the region's area. Native forest is the greatest responsible for storing carbon, and answers for about 90% of the total amount of carbon stocked in AGLB. These fragments, besides contributing to carbon sequestration, become important providers of other ecosystem services. The PSA-REED+ economical mechanisms for environmental protection may become one of the most promising paths for compensation to the PSWSP's farmers who increase the forest cover at their properties.

ACKNOWLEDGEMENTS

EMBRAPA, for the financial support to the project “Analysis of geospatial distribution and environmental aspects of *Eucalyptus* crops in Paraíba do Sul river basin”, GEOVALE.

REFERENCES

- [1] Hansen, M. C., Potapov, P. V., Moore, R., Hancher, M., Turubanova, S. A., Tyukavina, A., Thau, D., Stehman, S. V., Goetz, S. J., Loveland, T. R., Kommareddy, A., Egorov, A., Chini, L., Justice, C. O. and Townshend, J. R. G., “High-resolution global maps of 21st-century forest cover change”, *Science* 342, 850–853 (2013).
- [2] Observatório ABC, [Agricultura de Baixa Emissão de Carbono – Invertendo o sinal de carbono da agropecuária brasileira: uma estimativa do potencial de mitigação de tecnologias do Plano ABC de 2012 a 2023], Fundação Getúlio Vargas (FGV), São Paulo, 31p (2015).
- [3] Poorter, L., Bongers, F., Aide, T. M. et al., “Biomass resilience of Neotropical secondary forests”, *Nature* 530, 211–214 (2016).
- [4] Chazdon, R. L., Broadbent, E. N., Rozendaal, D. M., Bongers, F., Zambrano, A. M. A., Aide, T. M. and Craven, D., “Carbon sequestration potential of second-growth forest regeneration in the Latin American tropics”, *Sci. Adv.* 2(5), e1501639 (2016).
- [5] Vieira, A. S., Alves, L. F., Duarte-Neto, P. J., Martins, S. C., Veiga, L. G., Scaranello, M. A., Picollo, M. C., Camargo, P. B., Do Carmo, J. B., Sousa Neto, E., Santos, F. A. M., Joly, C. A. and Martinelli, L. A., “Stocks of carbon and nitrogen and partitioning between above-and belowground pools in the Brazilian coastal Atlantic Forest elevation range”, *Ecol. Evol.* 1(3), 421-434 (2011).
- [6] Robinson, S. J. B., van den Berg, E., Meirelles, G. S. and Ostle, N., “Factors influencing early secondary succession and ecosystem carbon stocks in Brazilian Atlantic Forest”, *Biodivers. Conserv.* 24(9), 2273-2291 (2015).
- [7] Diniz, A. R., Machado, D. L., Pereira, M. G., de Carvalho Balieiro, F. and Menezes, C. E. G., “Biomassa, estoques de carbono e de nutrientes em estádios sucessionais da Floresta Atlântica, RJ”, *Rev. Bras. Ciênc. Agr.* 10(3), 443-451 (2015).
- [8] Joly, C. A., Metzger, J. P. and Tabarelli, M., “Experiences from the Brazilian Atlantic Forest: ecological findings and conservation initiatives”, *New Phytol.* 204, 459–473 (2014).
- [9] IBGE, [Indicadores de Desenvolvimento Sustentável], Coordenação de Recursos Naturais e Estudos Ambientais e Coordenação de Geografia (IBGE), Rio de Janeiro/RJ, 352p (2015).
- [10] Pütz, S., Groeneveld, J., Henle, K., Knogge, C., Martensen, A. C., Metz, M. and Huth, A., “Long-term carbon loss in fragmented Neotropical forests”, *Nat. Commun.* 5, 5037 (2014).
- [11] Lira, P. K., Tambosi, L. R., Ewers, R. M. and Metzger, J. P., “Land-use and land-cover change in Atlantic Forest landscapes”, *Forest Ecol. Manage.*, 278(15), 80–89 (2012).
- [12] Azevedo, J. C., Perera, A. H. and Pinto, M. A., [Forest landscapes and global change: challenges for research and management], Springer, New York, 75-105 (2014).
- [13] Silva, R. F. B., Batistella, M., Moran, E. F. and Lu, D., “Land Changes Fostering Atlantic Forest Transition in Brazil: Evidence from the Paraíba Valley”, *Prof. Geogr.*, 1-14 (2016).
- [14] Rezende, C. L., Uezu, A., Scarano, F. R. and Araujo, D. S. D., “Atlantic forest spontaneous regeneration at landscape scale”, *Biodiv. Conserv.* 24(9), 2255-2272 (2015).
- [15] Brancalion, P. H. S., Viani, R. A. G., Strassburg, B. B. N. and Rodrigues, R. R., “Finding the money for tropical forest restoration”, *Unasylva* 63, 41–50 (2012).
- [16] Eva, H. D., Carboni, S., Achard, F., Stach, N., Durieux, L., Faure, J-F. and Mollicone, D., “Monitoring forest areas from continental to territorial levels using a sample of medium spatial resolution satellite imagery”, *J. Photogramm. Remote Sens.* 65(2), 191–197 (2010).
- [17] Itani, M. R., Barros, C. M., Figueiredo, F. E. L., Andrade, M. R. M., Mansor, M. T. C., Mangabeira, R. L. and Carvalho V. S., [Subsídios ao planejamento ambiental: Unidade de Gerenciamento de Recursos hídricos Paraíba do Sul – UGRHI 02/Subsidies for Environmental Planning: Hydrographic Unit Water of Resources Management of Paraíba do Sul – UGRHI 02], CETESB: Secretaria do Meio Ambiente, São Paulo/SP, 204p (2011).
- [18] Leão, R. O. M., [Regressive Evolution of stream channels by sub-surface water flow: geo-hydro-ecological bases for recovering degraded areas by the controlling of erosion], PhD thesis - Federal University of Rio de Janeiro, Rio de Janeiro, (2005).
- [19] U.S. Geological Survey, “Landsat Processing Details”, <http://landsat.usgs.gov/Landsat_Processing_Details.php> (23 March 2016).
- [20] Adler-Golden, S. M., Matthew, M. W., Bernstein, L. S., Levine, R. Y., Berk, A., Richtsmeier, S. C., Acharya, P. K., Anderson, G. P., Felde, G., Gardner, J., Hoke, M., Jeong, L. S., Pukall, B., Ratkowski, A. and Burke, H-H, “Atmospheric Correction for Short-wave Spectral Imagery Based on MODTRAN4”, *Proc. SPIE*3753, 61-69 (1999).
- [21] Foody, G. M., “Status of land cover classification accuracy assessment”, *Remote Sens. Environ.* 80(1), 185-201 (2002).

- [22] Caprioli, M. and Tarantino, E., “Accuracy Assessment of Per-field Classification Integrating Very Fine Spatial Resolution Satellite Imagery with Topographic Data”, *J. Geospatial Eng.* 3(2), 127-134 (2001).
- [23] Kronka, F. J. N., [Inventário florestal das áreas reflorestadas do Estado de São Paulo], Instituto Florestal: Secretaria de Estado do Meio Ambiente, São Paulo, 184p (2002).
- [24] Instituto de Economia Agrícola – IEA, “Banco de dados”, <<http://www.iea.sp.gov.br/out/bancodedados.html>> (10 August 2016).
- [25] Ronquim, C. C., Gonçalves, J. M. C., Guilardi, V., Garçon, E. A. M. V. and Aguiar, D. A., [Dinâmica de uso e cobertura da terra em áreas de produção de café e cana-de-açúcar em municípios paulistas das bacias dos rios Mogi-Guaçu e Pardo entre 1988 e 2015], Embrapa Monitoramento por Satélite, Campinas/SP, 28p (2015).
- [26] Rudorff, B. F. T., Aguiar, D. A., Silva, W. F., Sugawara, L. M., Adami, M. and Moreira, M. A., “Studies on the Rapid Expansion of Sugarcane for Ethanol Production in São Paulo State (Brazil) Using Landsat Data”, *Remote Sens.* 2(4), 1057-1076 (2010).
- [27] Bernard, E., Melo, F. P. L. and Pinto, S. R. R., “Challenges and opportunities for biodiversity conservation in the Atlantic Forest in face of bioethanol expansion”, *Trop. Conserv. Sci.* 4, 267–275 (2011).
- [28] Buainain, A. M., Alves, E., da Silveira, J. M. and Navarro, Z., [O mundo rural no Brasil do século 21: a formação de um novo padrão agrário e agrícola], Embrapa, Brasília/DF, 35-76 (2014).
- [29] Argüello, F. V. P., [Expansão do eucalipto no trecho paulista da bacia hidrográfica Paraíba do Sul], Dissertação de Mestrado - Universidade de Taubaté, Taubaté/SP, 25p (2010).
- [30] Timo, T. P. C., Lyra-Jorge, M. C., Gheler-Costa, C. and Verdade, L. M., “Effect of the plantation age on the use of Eucalyptus stands by medium to large-sized wild mammals in south-eastern Brazil”, *iForest-Biogeosci. Forest.* 8(2), 108-113 (2015).
- [31] Menezes, S. J. M. C., Sedyama, G. C., Soares, V. P., Gleriani, J. M. and Andrade, R. G., “Estimativa dos componentes do balanço de energia e da evapotranspiração em plantios de eucalipto utilizando o algoritmo sebal e imagem landsat 5 – TM”, *Rev. Árvore* 35, 649-657 (2011).
- [32] Silva, R. F. B., Batistella, M., Moran E. F. “Drivers of land change: Human-environment interactions and the Atlantic forest transition in the Paraíba Valley, Brazil”. *Land Use Pol.* 58, 133–144, (2016).
- [33] Costa, K. M., [O estoque de carbono na vegetação e no solo de fragmentos florestais em paisagens tropicais], Dissertação de Mestrado - Universidade de São Paulo, São Paulo, 66p (2015).
- [34] Coutinho, R. P., [Estoques de carbono e emissão de N₂O no sistema solo-planta em região da Mata Atlântica], Dissertação de Mestrado - Universidade Federal Rural do Rio de Janeiro, Rio de Janeiro, 57p (2009).
- [35] Oliveira, M., Ril, F. L., Perett, C., Capellesso, E. S., Sause, T. L., Budke, J. C., “Biomassa e estoques de carbono em diferentes sistemas florestais no sul do Brasil”, *Perspectiva* 40(149), 09-20 (2016).
- [36] Barbosa, T. C., [Quantificação de biomassa e carbono da parte aérea em uma área de Mata Atlântica, na Serra da Cantareira, São Paulo], Tese de Doutorado - Universidade de São Paulo, São Paulo, 99p (2015).
- [37] Maas, G. C. B., [Compartimentação do estoque de carbono em floresta ombrófila Mista], Tese de Doutorado - Universidade Federal do Paraná, Curitiba/PR, 172p (2015).
- [38] de Figueiredo, L. T. M., Soares, C. P. B., de Sousa, A. L., Leite, H. G. and da Silva, G. F., “Dinâmica do estoque de carbono em fuste de árvores de uma floresta estacional semidecidual”. *Cerne* 21(1), 161-167 (2015).
- [39] Lipinski, E. T., [Dinâmica de biomassa e carbono da parte aérea durante 17 anos em um fragmento de floresta ombrófila mista montana], Trabalho de Conclusão de Curso - Universidade Federal do Paraná, Curitiba/PR, 39p (2015).
- [40] Carvalho, F. D., [Modulação do estoque de carbono em paisagens fragmentadas da Mata Atlântica em função dos efeitos de borda], Dissertação de Mestrado - Universidade de São Paulo, São Paulo, 73p (2015).
- [41] Barreto, T. G., Dalla Corte, A. P., Mognon, F., Rodrigues, A. L. and Sanquetta, C. R., “Dinâmica da biomassa e do carbono em fragmento urbano de floresta ombrófila mista”, *Encicl. Biosf.* 10(18), 1300-1315 (2014).
- [42] Carvalho, L. S., Cerqueira, R. M., da Silva, G. V. and Silva, E. R. M., “Estoque de carbono em um fragmento de floresta estacional semidecídua no município de Ribeirão Grande, São Paulo”, *Bioikos* 28(2), 73-85 (2015).
- [43] Romitelli, I., [Variabilidade espacial nos estoques de carbono em paisagens fragmentadas da Mata Atlântica], Dissertação de Mestrado - Universidade de São Paulo, São Paulo, 55p (2014).
- [44] Gaspar, R. D. O., [Classificação de estágios sucessionais, estoque e crescimento em carbono de floresta estacional semidecidual, Vale do Rio Doce, MG], Tese de Doutorado - Universidade Federal de Viçosa, Viçosa/MG, 74p (2013).
- [45] Amaro, M. A., Soares, C. P. B., Souza, A. L. D., Leite, H. G. and Silva, G. F. D., “Estoque volumétrico, de biomassa e de carbono em uma Floresta Estacional Semidecidual em Viçosa, Minas Gerais”, *Rev. Árvore* 37(5), 849-857 (2013).

- [46] Torres, C. M. M. E., Jacovine, L. A. G., Soares, C. P. B., Oliveira Neto, S. N., Santos, R. D. and Castro Neto, F., “Quantificação de biomassa e estocagem de carbono em uma floresta estacional semidecidual, no Parque Tecnológico de Viçosa, MG”, *Rev. Árvore* 37(4), 647-55 (2013).
- [47] Mognon, F., “Dinâmica do estoque de carbono como serviço ambiental prestado por um fragmento de Floresta Ombrófila Mista Montana localizada no Sul do Estado do Paraná”, *Floresta* 43(1), 153-164 (2013).
- [48] Stucchi, G. B., [Estimativa dos estoques de carbono na parte aérea de reflorestamentos de espécies nativas e remanescentes florestais], Dissertação de Mestrado - Universidade de São Paulo, São Paulo, 78p (2013).
- [49] Souza, A. L., Boina, A., Soares, C. P. B., Vital, B. R., Gaspar, R. O. and Lana, J. M., “Estrutura fitossociológica, estoques de volume, biomassa, carbono e dióxido de carbono em floresta estacional semidecidual”, *Rev. Árvore* 36(1), 169-179 (2012).
- [50] Watzlawick, L. F., Caldeira, M. V. W., Viera, M., Schumacher, M. V., de Oliveira Godinho, T. and Balbinot, R., “Estoque de biomassa e carbono na Floresta Ombrófila Mista Montana, Paraná”, *Sci. Forestalis* 40(95), 353-362 (2012).
- [51] Amaral, L. de P., Ferreira, R. A., Watzlawick, L. F., Genú, A. M., “Análise da distribuição espacial de biomassa e carbono arbóreo acima do solo em Floresta Ombrófila Mista”, *Ambiência* 6, 103–114 (2010).
- [52] Ribeiro, S. C., Jacovine, L. A. G., Soares, C. P. B., Martins, S. V., Nardelli, A. M. B. and Souza, A. L. D., “Quantificação de biomassa e estimativa de estoque de carbono em uma capoeira da Zona da Mata Mineira”, *Rev. Árvore* 34(3), 495-504 (2010).
- [53] Silveira, P., “Estimativa da biomassa e carbono acima do solo em um fragmento de floresta ombrófila densa utilizando o método da derivação do volume comercial”, *Floresta* 40(4), 789-800 (2010).
- [54] Ribeiro, S. C., Jacovine, L. A. G., Soares, C. P. B., Martins, S. V., Souza, A. L. D. and Nardelli, A. M. B., “Quantificação de biomassa e estimativa de estoque de carbono em uma floresta madura no município de Viçosa, Minas Gerais”, *Rev. Árvore* 33(5), 917-926 (2009).
- [55] Velasco, G. D. N. and Higuchi, N., “Estimativa de sequestro de carbono em mata ciliar: Projeto POMAR, São Paulo (SP)”, *Ambiência - Rev. Setor Ciênc. Agr. Ambient.* 5(1), 135–41 (2007).
- [56] Cunha, G. M., Gama-Rodrigues, A. C., Gama-Rodrigues, E. F. and Velloso, A. C. X., “Biomassa e estoque de carbono e nutrientes em florestas montanas da Mata Atlântica na região norte do estado do Rio de Janeiro”, *Rev. Bras. Ciênc. Solo* 33(5), 1175-1185 (2009).
- [57] Brun, E. J., [Biomassa e nutrientes na Floresta Estacional Decidual, em Santa Tereza, RS], Dissertação de Mestrado - Universidade Federal de Santa Maria, Santa Maria/RS, 136p (2004).
- [58] Lima, J. A. S., Carmo, C. A. F. S., Kindel, A. and Motta, P. E. F., [Estimativa de biomassa e estoque de carbono de uma floresta secundária em Minas Gerais], Embrapa Solos, Rio de Janeiro/RJ, 18p (2003).
- [59] Sanquetta, C. R., Watzlawick, L. F., Balbinot, R., Ziliotto, M. A. and Gomes, F. S., [As florestas e o carbono], Universidade Federal do Paraná, Curitiba/PR, 153-173 (2002).
- [60] Brianezi, D., Jacovine, L. A. G., Soares, C. P. B., Gonçalves, W. and da Rocha, S. J. S. S., “Balanço de Emissões e Remoções de Gases de Efeito Estufa no Campus da Universidade Federal de Viçosa”, *Floresta Ambient.* 21(2), 182-191 (2014).
- [61] Bassanelli, H. R., [Determinação de carbono total em plantações de eucalipto e pastagens], Dissertação de Mestrado - Universidade de Taubaté, Taubaté/SP, 47p (2013).
- [62] Santos, L. C., Carvalho, A. M. M. L., Pereira, B. L. C., Oliveira, A. C., Carneiro, A. D. C. O. and Trugilho, P. F., “Propriedades da madeira e estimativas de massa, carbono e energia de clones de *Eucalyptus* plantados em diferentes locais”, *Rev. Árvore* 36(5), 971-980 (2012).
- [63] Rocha, M. F. V., [Influência do espaçamento e da idade na produtividade e propriedades da madeira de *Eucalyptus grandis* x *Eucalyptus camaldulensis* para energia], Dissertação de Mestrado - Universidade Federal de Viçosa, Viçosa/MG, 71p (2011).
- [64] Gatto, A., Barros, N. F. D., Novais, R. F. D., Silva, I. R. D., Leite, H. G. and Villani, E. M. D. A., “Estoque de carbono na biomassa de plantações de eucalipto na região centro-leste do estado de Minas Gerais”, *Rev. Árvore* 35(4), 895-905 (2011).
- [65] Silva, R. F., Soares, C. P. B., Jacovine, L. A. G., da Silva, M. L., Leite, H. G. and da Silva, G. F., “Projeção do estoque de carbono e análise da geração de créditos em povoamentos de eucalipto”, *Rev. Árvore* 32(6), 979-992 (2008).
- [66] Paixão, F. A., Soares, C. P. B., Jacovine, L. A. G., Silva, M. L. D., Leite, H. G. and Silva, G. F. D., “Quantificação do estoque de carbono e avaliação econômica de diferentes alternativas de manejo em um plantio de eucalipto”, *Rev. Árvore* 30(3), 411-420 (2006).