

Phenotypic and genotypic characterization and compatibility among genotypes to select elite clones of cupuassu

Rafael Moysés ALVES^{1*}, Carlos Rogério de Sousa SILVA², Paulo Sérgio Bevilaqua de ALBUQUERQUE², Vinicius Silva dos SANTOS³

¹ Embrapa Amazônia Oriental, Tv. Dr. Enéas Pinheiro S/N, CP 48, CEP 66095-100, Bairro Marco, Belém, Pará, Brasil

² Estação de Recursos Genéticos José Haroldo, Comissão Executiva do Plano da Lavoura Cacaueira, BR 316, km 17, CP 46, CEP 67105-970, Marituba, Pará, Brasil

³ Universidade Federal de Viçosa (UFV), Avenida Peter Henry Rolfs, s/n, Campus Universitário, CEP 36570-900, Viçosa, Minas Gerais, Brasil

* Corresponding author: rafael-moyses.alves@embrapa.br

ABSTRACT

The expansion of the genetic base of cultivated materials is an ongoing activity of the cupuassu (*Theobroma grandiflorum*) breeding program. However, the parents involved need to be genotypically and phenotypically characterized to ensure compatibility of crossings, as well as to assist in the selection of more promising individuals for hybridization. This study aimed to identify and select *T. grandiflorum* clones that are compatible and genetically divergent using tools such as the estimates of genotypic, phenotypic, and combined distances, as well as the compatibility rates among clones. The genetic distance analysis of the clones was performed with 14 heterologous microsatellite primers of cocoa (*Theobroma cacao*) that amplify the DNA of cupuassu. Phenotypic characterization was based on 14 variables related to fruit production. The joint dissimilarity matrix was obtained by means of the sum of the phenotypic and molecular dissimilarity matrices. The intra- and inter-clonal compatibility was estimated through controlled crossings. A low correlation was noted between the dissimilarity matrices based on the molecular and agronomic data. As for compatibility, all clones were self-incompatible, with different compatibility rates when crossed. The compatibility index was strongly influenced by the degree of relationship of the clones. It was possible to identify and select the most promising sets of cupuassu clones to be used in breeding programs, despite their genetic relationship.

KEYWORDS: microsatellites, tropical fruit, diversity, plant breeding, *Theobroma grandiflorum*

Caracterização fenotípica, genotípica e compatibilidade entre genótipos para seleção de clones elite de cupuaçuzeiro

RESUMO

A ampliação da base genética dos materiais de cultivo é trabalho contínuo do programa de melhoramento genético do cupuaçuzeiro (*Theobroma grandiflorum*). Há necessidade, entretanto, que os parentais envolvidos estejam caracterizados fenotípica e genotipicamente, para auxiliar na escolha dos indivíduos que serão hibridizados, bem como para garantir os mecanismos de rastreabilidade e proteção das cultivares. Este estudo teve como objetivo identificar e selecionar clones de cupuaçuzeiro inter-compatíveis e geneticamente divergentes, utilizando como ferramentas as distâncias genotípica, fenotípica e combinada mistas, assim como as taxas de compatibilidade entre os clones. Estimativas das distâncias genéticas entre os clones foram realizadas com base em 14 iniciadores microsatélites heterólogos de cacaueteiro (*Theobroma cacao*) que amplificam o DNA do cupuaçuzeiro. Para a caracterização fenotípica foram empregadas 14 variáveis relacionadas à produção de frutos. A matriz de dissimilaridade conjunta foi obtida por meio da soma das matrizes de dissimilaridade fenotípica e molecular. A compatibilidade intra e inter-clonal foi estimada através de cruzamentos controlados. Houve uma baixa correlação entre as matrizes de dissimilaridade com base nos dados moleculares e agrônômicos. Quanto à compatibilidade, todos os clones foram auto-incompatíveis, contudo, compatíveis entre si, com diferentes taxas. O índice de compatibilidade foi fortemente influenciado pelo grau de relacionamento dos clones. Foi possível identificar e selecionar os conjuntos de clones de cupuaçuzeiro mais promissores para ser usados em melhoramento genético, apesar da ocorrência de relação genética entre eles.

PALAVRAS-CHAVE: microsatélites, fruteira tropical, diversidade, melhoramento de plantas, *Theobroma grandiflorum*

INTRODUCTION

Cupuassu (*Theobroma grandiflorum* [Willd. ex Spreng.] Schum.) is a plant that is native to the Amazon and of great importance to family farmers in northern Brazil (Alves *et al.* 2007). In general, cupuassu plantations have low productivity due to the unselected planting material employed, with high variability and susceptibility to diseases (Alves *et al.* 2009). Among the diseases that occur in the cupuassu, the witch's broom, caused by the fungus *Moniliophthora perniciosa* (Stahel: Aime & Phillips-Mora), is the most important and, when left uncontrolled, the commercial planting becomes infeasible (Alves *et al.* 2009). The cupuassu genetic breeding programs conducted in the Brazilian Amazon (Alves *et al.* 2010; Souza *et al.* 2002) focus on obtaining plants that are resistant to witch's broom, and with a high production of pulp and seeds (Regazzi *et al.* 2002; Machado *et al.* 2002).

In 2012, the BRS Carimbó variety was released, which is propagated by seeds with a genetic structure of improved first-cycle population, and obtained by the crossing of 16 parents (Alves *et al.* 2010). Further assessments revealed that these 16 parental clones possessed exceptional characteristics of yield and resistance to witch's broom. Thus, a clonal variety selected from a subset of these 16 clones should show a potential of high genetic gain. However, the fact that some of the 16 parental clones are related (half and full sibs) makes it necessary to employ an effective methodology that allows the identification of the subsets of more compatible and divergent clones.

The breeding programs and conservation of tree species generally use predictive methods for the analysis of genetic divergence, assessing morphological, physiological, chemical, and molecular characteristics, among others, which are usually quantified by a dissimilarity measure. However, in studies of genetic diversity different types of data are analyzed separately. One reason for this is the lack of methodologies that allow the analysis of different types of variables based on a single measure of dissimilarity (Franco *et al.* 1997). In order to resolve this issue, Cruz *et al.* (2011) proposed three different methodologies for the joint analysis of molecular and phenotypic data: (a) the sum of the standardized distances of individual matrices, (b) the transformation of quantitative variables in multicategories, and (c) the use of the distance proposed by Gower (1971) by adding the phenotypic matrix with the genotypic distance matrix.

In cocoa (*Theobroma cacao* L.), the evaluation and characterization of the accessions collected and maintained in germplasm banks have been routinely practiced. Several characters have shown high variability, such as those related to the leaf, fruit, seed, flower, plant architecture, self-incompatibility, and production (Almeida *et al.* 2009; Santos *et al.* 2011; Alexandre *et al.* 2015).

Self-incompatibility systems are common in the genus *Theobroma*, and have been extensively studied in cocoa. In the self-incompatible MC 30 cocoa clone, the self-incompatibility mechanism operated in two stages, initially preventing pollen germination and then gametic fusion (Aneja *et al.* 1994). Subsequent studies demonstrated that three loci are involved in the control of cocoa fertilization (Ramos *et al.* 2005). Similar to *T. cacao*, *T. grandiflorum* presents pre-zygotic self-incompatibility with ovarian reaction, and the abscission of the flower before the formation of the embryo (Venturieri, 2011). The estimate of the multilocus crossing rate also suggests that *T. grandiflorum* is a perfectly allogamous species (Alves *et al.* 2003).

Low productivity of cupuassu is strongly influenced by reduced fertility owing to issues of pollination and self-incompatibility. The weak conversion of flowers into fruit stems from the presence of natural barriers that affect the number of pollinated flowers (Venturieri, 2011). Besides being an essentially allogamous species, with selfing rates of nearly zero, cupuassu also presents inter-clonal incompatibility, which is directly proportional to the degree of relationship between the involved parents (Falcão *et al.* 1999).

This study aimed to identify and select *T. grandiflorum* clones that are inter-compatible and genetically divergent using estimates of genotypic, phenotypic and combined distances, as well as the compatibility rates among clones.

MATERIALS AND METHODS

Agronomic description

The experiment for the collection of phenotypic data was conducted from 2008 to 2012 in the municipality of Tomé Açu (in the northeastern region of the state of Pará, Embrapa Eastern Amazonia; 2°25'08"S, 48°09'08" W). This region has a hot and humid climate, with an average annual temperature of 26.4°C (maximum 32.8°C, minimum 21.9°C) and an average precipitation of 2,300 mm. The soil is characterized as a Dystrophic Yellow Latosol, which is deep and of medium texture (Rodrigues *et al.* 2001).

The 16 parental clones (Table 1) were distributed in an experimental design of randomized complete blocks with 16 treatments (clones) and 20 replications. Each plant constituted one experimental plot. The phenotypic characterization was based on the fruit characteristics of the clones. The samples were collected from five fruits/plant/crop, measured individually as per the method described by Machado *et al.* (2002) in four crops between 2008 and 2012. Fourteen characteristics were used in the study: fruit longitudinal length (FLL, in mm); fruit transversal diameter (FTD, in mm); fruit rind thickness (FRT, in mm); fruit weight (FW, in g); rind weight (RW, in g); fresh seed weight (FSW, in g); dry seed weight (DSW, in g); pulp

Table 1. Ancestry and origin of *T. grandiflorum* clones evaluated in this study. AM indicates origin in the state of Amazonas, Brazil; PA indicates origin in the state of Pará, Brazil.

Clone	Ancestry	Origin of mother	Origin of father
32	174 x 186	174: Coari – AM	186: Codajás – AM
42	186 x 434	186: Codajás – AM	434: Muaná – PA
44	186 x 434	186: Codajás – AM	434: Muaná – PA
46	186 x 215	186: Codajás – AM	215: Manacapuru – AM
47	186 x 1074	186: Codajás – AM	1074: Itacoatiara – AM
48	186 x 1074	186: Codajás – AM	1074: Itacoatiara – AM
51	215 x 624	215: Manacapuru – AM	624: Santarém – PA
56	186 x 1074	186: Codajás – AM	1074: Itacoatiara – AM
57	186 x 513	186: Codajás – AM	513: Oiapoque – AP
61	220 x 228	220: Manacapuru – AM	228: Manaus – AM
62	220 x 185	220: Manacapuru – AM	185: Codajás – AM
63	174 x 248	174: Coari – AM	248: Itacoatiara – AM
64	220 x 185	220: Manacapuru – AM	185: Codajás – AM
174	Original collection	174: Coari – AM	-
215	Original collection	215: Manacapuru – AM	-
1074	Original collection	1074: Itacoatiara - AM	-
186	Original collection	186: Codajás – AM	-

weight (PW, in g); number of seeds per fruit (NS); number of fruits per plant (NF); pH; total soluble solids (TSS); titratable acidity (TTA); and total solids (TS).

Molecular characterization

To perform the genetic characterization, leaf tissues of clones were subjected to DNA extraction in the molecular biology laboratory of CEPLAC in Marituba, Pará. The extraction was performed according to the protocol of Doyle and Doyle (1990) as modified by Figueira *et al.* (1997) for *Theobroma* spp. The molecular markers used were microsatellites of *T. cacao*, which were developed by Lanaud *et al.* (1999) and Pugh *et al.* (2004). We employed 14 heterologous primers of *T. cacao* microsatellites that amplify the DNA of cupuassu, based on the selection made by Alves *et al.* (2007). The reactions were prepared in a final volume of 13 µl containing 15 ng of genomic DNA; 100 µM of each dNTP; 0.2 µM of each primer (forward and reverse); enzyme buffer (50 mM KCl, 10 mM Tris-HCl; pH 8.8, 0.1% Triton X-100, 1.5 mM MgCl₂), and 1 unit of Taq DNA polymerase. The reactions were amplified in a Thermocycler GeneAmp PCR System 9700 (Applied Biosystems; Foster City, USA), which was initially programmed with a cycle of denaturation at 94°C for 4 min; followed by 10 cycles of 94°C for 40 s,

with a decrease of 1°C by cycle, with an initial temperature of 59°C and final temperature of 49°C for 40 s, and, finally, an extension at 72°C for 60 s. The amplified fragments were separated on polyacrylamide denaturant gel at 6% and revealed using silver nitrate, as per the method of Creste *et al.* (2001). The profile of each tested material was obtained to serve as the “fingerprint” of genetic characterization in order to ensure the identity and traceability of the clones.

Interclone compatibility

To define the interclonal compatibility rate, we performed controlled crossings in a partial diallel design of 16 x 17, with 10 pollinations per crossing, repeated in two seasons (2010 and 2011). In this study, the clone 186 (Codajás) (Table 1) was added to the 16 evaluated genotypes because it is a parent of eight of the tested materials. We performed 136 crossings in total.

Evaluations were performed at 15 days after pollination, when the fruit formation was perfectly defined. For each crossing, the percentage of fruit sets resulting from 10 pollinations was calculated, which allowed us to estimate the average compatibility rate of each clone. The standard deviation was also estimated as a measure of intracolon variability. We used an adaptation of the methodology suggested by Zapata and Arroyo (1978), the index “Percentage of High Crossings” (PHC), which assumes that compatibility rates above a cut-off of 30% are indicative of good compatibility between the materials involved in the crossings: $PHC = (NCS \times 100) / TC$, where NCS = the number of crossings of a specific clone with a compatibility rate of >30% and TC = the total number of crossings of the specific clone.

Statistical analysis

The genetic diversity study was based on cluster analysis using phenotypic and genotypic data, as well as the combination of both. For the phenotypic data, a multicollinearity diagnostic was performed based on the condition number (CN) proposed by Montgomery *et al.* (2001), where $CN < 100$ indicates weak, $100 \leq CN \leq 1000$ moderate to strong, and $CN > 1000$ severe multicollinearity. If multicollinearity is observed in moderate to severe levels, the highest correlated variables should be excluded (Cruz *et al.* 2014). Severe multicollinearity can alter the hierarchical clustering pattern because multicollinear variables are given greater weight in the analysis (Corrar *et al.* 2007; Cargnelutti Filho *et al.* 2009). A Gower’s distance matrix was generated for the uncorrelated agronomic traits, with distance measure ranging from 0 to 1 (Cruz *et al.* 2011).

For the molecular data, genetic distances among clones were estimated by the arithmetic complement of the unweighted index (ACUI), which also ranges from 0 to 1 (Cruz *et al.* 2011). The combined distance of genotypic and phenotypic data was obtained by the sum of the Gower and

ACUI distance matrices, as described by Cruz *et al.* (2011) and Alves *et al.* (2013).

The three dissimilarity matrices were used in a hierarchical clustering analysis based on the complete linkage (farthest neighbor) method. The cut-off point for cluster separation in the dendrogram was set according to Mojena's criterion (Mojena, 1977), which aims to select the number of groups in step *j* that, first, satisfies the following inequality: $a_j > \bar{a} + k s_a$, where a_j is the distance value of the fusion level corresponding to steps *j*, (for $j = 1, 2, \dots, g-1$), where \bar{a} is the mean of a , given by:

and s_a is the standard deviation of a , given by:

and k is a constant equal to 1.25, as suggested by Milligan and Cooper (1985). All analyses were conducted using the Genes software (Cruz, 2013).

For the selection process, the promising set of clones were identified through most of the compatible clones for each reference clone, considering the PHC index. From these groupings, we sequentially removed clones with very close genotypic, phenotypic, and combined distances. The remaining clones were assumed to be most favorable genotypes for the production of hybrids with the reference clone or polyclonal varieties.

RESULTS

We obtained 41 fragments from the 14 microsatellite loci evaluated, an average of 2.9 alleles/locus (Table 2). The most polymorphic loci were mTcCIR 7, mTcCIR 25, mTcCIR99, and mTcCIR 135.

The hierarchical clustering of clones considering only molecular aspects formed three groups (Figure 1). In Group I, a prevalence of the ancestral clone 220 from the Manacapuru region (Amazonas State) was noted. In Group II, all clones were hybrids of clone 186 (Codajás-AM). Group III was composed of clones originating from Itacoatiara and Codajás (Amazonas State). The average distance based on ACUI was 0.455. The smallest distance observed between clones of the same genetic origin was 0.192 for clones 47 and 48 (both originated from the crossing of 186 and 1074). The greatest distance was 0.727, as observed between clones without geographic or genetic relationships.

Severe multicollinearity among phenotypic variables was noted. After exclusion of the variables rind thickness (RT), fruit weight (FW), and dry seed weight (DSW), CN was reduced to 76.51, indicating low multicollinearity. Fruit weight is an important variable, but it is highly multicollinear as it represents the sum of the variables pulp weight (PW), rind weight (RW), and fresh seed weight (FSW). The clustering of clones based on phenotypic data (Figure 2) showed the formation of two groups: Group I consisted of 7 clones,

Table 2. SSR primers used in the study, location in the linkage group, estimated size (bp), and the number of alleles in the analysis of 16 clones of *T. grandiflorum* at Embrapa Eastern Amazonia, Pará State, Brazil.

Locus	Linkage group	Size of cloned allele (bp)	Estimated size (bp)	Number of alleles
mTcCIR 7	VII	160	147, 149, 150, 152	4
mTcCIR 9	VI	274	295, 310	2
mTcCIR 17	IV	271	280, 292	2
mTcCIR 25	VI	153	134, 135, 147, 170	4
mTcCIR 26	VIII	298	250, 265, 270	3
mTcCIR 54	I	165	149, 150, 151	3
mTcCIR 57	IV	253	260, 268, 270	3
mTcCIR 99	VIII	249	270, 280, 288, 300	4
mTcCIR 124	IX	131	155, 162	2
mTcCIR 135	III	246	254, 260, 270, 280	4
mTcCIR 162	III	162	190, 200, 204	3
mTcCIR 220	X	201	225, 230	2
mTcCIR 270	I	224	220, 222	2
mTcCIR 286	I	119	290, 300, 304	3

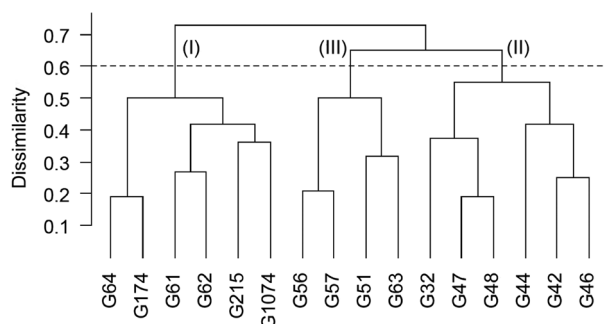


Figure 1. Dendrogram resulting from the hierarchical clustering analysis of genotypic characters of cupuassu (*T. grandiflorum*) clones using the complete linkage (farthest neighbor) method and the measure of dissimilarity of unweighted arithmetic complement. The data are from cupuassu clones that originated in the states of Amazonas and Pará, Brazilian Amazon and were cultivated experimentally at Embrapa Eastern Amazonia, Pará, Brazil.

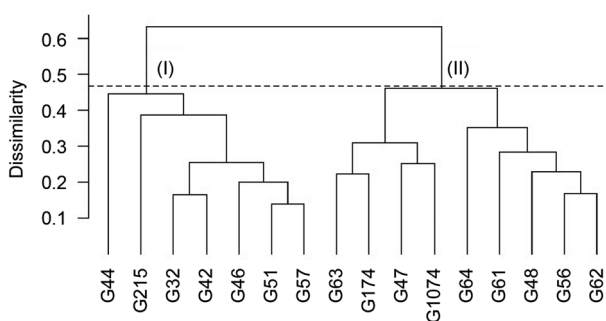


Figure 2. Dendrogram resulting from the hierarchical clustering analysis based on 11 phenotypic traits of cupuassu (*T. grandiflorum*) clones constructed using the complete linkage (farthest neighbor) method and Gower's distance matrix. The data are from the cupuassu clones that originated in the states of Amazonas and Pará, Brazilian Amazon and were cultivated experimentally at Embrapa Eastern Amazonia, Pará, Brazil.

including five descendants of clone 186 (Codajás, Amazonas), as was also observed in the genotypic grouping. Group II was formed by primary clones 174 and 1074, along with their descendants. Three progenies of clone 220 were also allocated to this group in accordance with the results of genotypic data (Figures 1 and 2).

The correlation between the matrices of genotypic and phenotypic distances was 0.02. The correlations between the matrix of combined distances (sum of the individual matrices) and the genotypic and phenotypic matrices were 0.80 and 0.58, respectively; both were significant by the *t* and Mantel tests at $P \leq 0.01$ with 1,000 simulations. The clustering based on the combined distance matrix formed three groups (Figure 3). With the exception of clone 61, all clones allocated to Group I were also assigned to the same group in the clustering based on genotypic information, but to different groupings in the phenotypic data clustering. Group II was composed of four clones, which were also allocated to the same group in the genotypic clustering; and, with the exception of clone 215, the remaining clones also belonged to the same group based on the phenotypic data. Group III was formed by the remaining six clones, of which 4 belonged to the same group based only on genotypic information.

The compatibility rate between full sib individuals and backcrossings was low (generally around 20%), 50% of the crossings between half sibs showed high values of compatibility, while only 19% of the crossings between

unrelated individuals showed low compatibility (Table 3). Clones 1074, 64, 56, and 61 had PHC > 75%, while other crossings involving half sibs showed a compatibility of $\leq 10\%$ (crossings 32 x 46; 32 x 57; 46 x 47; 46 x 57). Some half-sib crossings were so incompatible that they could not produce any fruit. Clone 47 was present in all the crossings, and thus may have been the cause of this extreme incompatibility. In the five crossings performed within each group of full sibs, 80% showed low compatibility values.

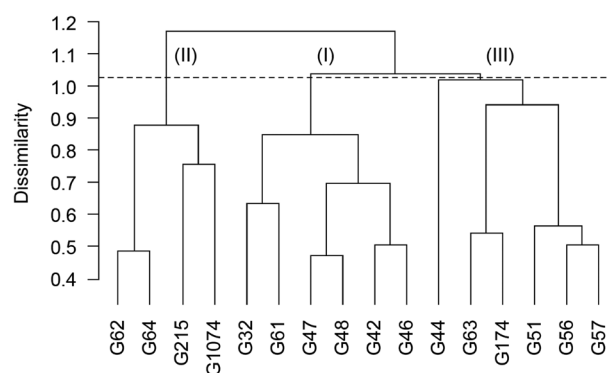


Figure 3. Dendrogram resulting from the hierarchical clustering analysis of the matrix of combined genotypic and phenotypic dissimilarities of cupuassu (*T. grandiflorum*) clones using the complete linkage (farthest neighbor) method. The data are from cupuassu clones that originated in the states of Amazonas and Pará, Brazilian Amazon, and were cultivated experimentally at Embrapa Eastern Amazonia, Pará, Brazil.

Table 3. Measured compatibility matrix, average compatibility rate (ACR), standard deviation (SD), and percentage of high crossings (PHC) among the crossings made with 16 genotypes of *T. grandiflorum* (parents of the BRS Carimbó variety) in 2010 and 2011 in Belém and Tomé Açu, Pará State, Brazil.

Parental	32	42	44	46	47	48	51	56	57	61	62	63	64	174	215	1074	186	ACR	SD	PHC	
32	.	15,0	56,7	7,5	0,0	45,0	18,4	40,0	2,5	35,0	15,0	22,5	30,0	23,9	41,3	65,0	6,8	26,5	19,3	43,8	
42		.	27,5	25,0	0,0	37,5	40,7	44,2	17,5	60,0	15,0	35,0	45,0	38,4	42,1	38,4	32,5	33,2	14,8	62,5	
44			.	77,5	46,7	21,7	35,0	15,0	75,0	42,5	15,0	67,5	85,0	83,8	85,0	90,0	24,4	52,8	27,7	68,8	
46				.	10,0	85,0	27,5	85,0	5,0	100,0	100,0	25,0	90,0	38,8	22,5	65,0	0,0	50,4	37,0	50,0	
47					.	0,0	80,0	79,2	0,0	40,0	45,0	90,0	35,0	60,0	80,0	56,3	5,0	41,8	33,2	62,5	
48						.	33,4	25,0	47,5	45,0	45,0	45,0	20,0	65,0	80,0	27,5	2,5	38,7	23,9	62,5	
51							.	40,0	22,5	15,0	35,0	65,0	45,0	85,0	12,9	44,6	21,9	40,2	21,6	62,5	
56								.	37,5	25,0	40,0	50,0	40,0	40,0	70,0	31,3	0,0	41,5	22,1	75,0	
57									.	85,0	15,0	65,0	50,0	65,0	70,0	85,0	2,5	42,8	31,3	56,3	
61										.	30,0	5,0	40,0	65,0	10,0	35,0	70,0	44,5	26,4	75,0	
62											.	50,0	0,0	25,0	70,0	20,0	50,0	37,0	24,9	56,3	
63												.	45,0	0,0	7,5	80,0	95,0	48,3	29,5	68,8	
64													.	25,0	70,0	35,0	35,0	44,0	22,9	81,3	
174														.	2,5	65,0	95,0	50,2	28,8	68,8	
215															.	70,0	90,0	52,2	31,1	68,8	
1074																.	85,0	55,2	22,9	87,5	
186																	.	40,6	37,0	50,0	
ACR																			43,7	26,7	64,7

When backcrossings were performed with the recurrent parents 174 (Coari), 186 (Codajás), 215 (Manacapuru), and 1074, fruit set rates were also low. This was observed for crossings 32 x 174, 63 x 174, 46 x 215, 51 x 215, and 48 x 1074. In 80% of the 15 backcrossings performed, the compatibility rate was <30%. Clone 186 (Codajás), ancestor of 50% of the evaluated materials, showed an extremely low compatibility when backcrossed with its descendants. On the other hand, when crossed with other genetically unrelated materials, the average compatibility of clone 186 (Codajás) was 74%.

Among the 16 clones studied, PHC > 30% varied from 7 (clone 32) to 14 (clone 1074) in crossings, generally with higher values for more distantly related clones. After removing genetically and morphologically related clones, and the combined genetic-morphologic relationships, each clone had 3

(clones 47 and 63) to 9 (clone 186) other clones with which it could be crossed to continue the breeding program (Table 4).

DISCUSSION

The 16 clones of *T. grandiflorum* studied here are grouped either by geographic origin (with unknown genetic relation) or by close genetic kinship. Another study of genetic diversity in cupuassu using molecular markers reported that the evaluated genotypes showed genetic divergence with a moderate level of allelic richness (Alves *et al.* 2013). In the present study, the number of groups formed based on the hierarchical clustering considering phenotypic and genotypic data, as well as the combination of both, varied between two and three groups. This was due to the fact that most of the clones have common ancestors, wherein half of the treatments are descendants

Table 4. Groups of clones of *T. grandiflorum* recommended for the final selection of genotypes based on the inter-clonal compatibility rates and genotypic and phenotypic distances among the clones. Data are from 16 cupuassu clones that originated in the states of Amazonas and Pará, Brazilian Amazon and were cultivated experimentally at Embrapa Eastern Amazonia, Pará State, Brazil.

Clone	Compatibility group (PHC* ≥ 30%)	Related clones** (low genetic distance)	Related clones** (low Gower distance)	Related clones** (low combined distances)	Final Selection of Genotypes
32	44, 48, 56, 61, 64, 215, 1074	44, 48	44, 215	48, 61	32, 56, 64, 1074
42	48, 51, 56, 61, 63, 64, 174, 215, 1074, 186	48	51, 215	48, 61	42, 56, 63, 64, 174, 1074, 186
44	32, 46, 47, 51, 57, 61, 63, 64, 174, 215, 1074	32, 46, 47	32, 46, 51, 57, 215	51, 57, 63, 174	44, 61, 64, 1074
46	44, 48, 56, 61, 62, 64, 174, 1074	44, 48	44	48, 61	46, 56, 62, 64, 174, 1074
47	44, 51, 56, 61, 62, 63, 64, 174, 215, 1074	44	56, 61, 62, 63, 64, 174, 1074	61	47, 51, 215
48	32, 42, 46, 51, 57, 61, 62, 63, 174, 215	32, 42, 46	61, 62, 63, 174	32, 42, 46, 61	48, 51, 57, 215
51	42, 44, 47, 48, 56, 62, 63, 64, 174, 1074	56, 63	42, 44,	44, 56, 63, 174	51, 47, 48, 62, 64, 1074
56	32, 42, 46, 47, 51, 57, 62, 63, 64, 174, 215, 1074	51, 57, 63	47, 62, 63, 64, 174, 1074	51, 57, 63, 174	56, 32, 42, 46, 215
57	44, 48, 56, 61, 63, 64, 174, 215, 1074	56, 63	44, 215	44, 56, 63, 174	57, 48, 61, 64, 1074
61	32, 42, 44, 46, 47, 48, 57, 62, 64, 174, 1074, 186	62, 64, 174, 1074	47, 48, 62, 64, 174, 1074	32, 42, 46, 47, 48	61, 44, 57, 186
62	46, 47, 48, 51, 56, 61, 63, 215, 186	61, 215	47, 48, 56, 61, 63	215	62, 46, 51, 186
63	42, 44, 47, 48, 51, 56, 57, 62, 64, 1074, 186	51, 56, 57	47, 48, 56, 62, 64, 1074	44, 51, 56, 57	63, 42, 186
64	32, 42, 44, 46, 47, 51, 56, 57, 61, 63, 215, 1074, 186	61, 215, 1074	47, 56, 61, 63, 1074	215, 1074	64, 32, 42, 44, 46, 51, 57, 186
174	42, 44, 46, 47, 48, 51, 56, 57, 61, 1074, 186	61, 1074	47, 48, 56, 61, 1074	44, 51, 56, 57	174, 42, 46, 186
215	32, 42, 44, 47, 48, 56, 57, 62, 64, 1074, 186	62, 64, 1074	32, 42, 44, 57	62, 64, 1074	215, 47, 48, 56, 186
1074	32, 42, 44, 46, 47, 51, 56, 57, 61, 63, 64, 174, 215, 186	61, 64, 174, 215	47, 56, 61, 63, 64, 174	64, 215	1074, 32, 42, 44, 46, 51, 57, 186
186	42, 61, 62, 63, 64, 174, 215, 1074	-	-	-	186, 42, 61, 62, 63, 64, 174, 215, 1074

*PHC: Percentage of High Crossings (percentage of crossings with compatibility rates ≥ 30%).

** Deleted clones of the compatibility group due to their genotypic proximity to other genotypes of the groups.

*** Deleted clones of the compatibility group due to their phenotypic proximity to other genotypes of the groups.

**** Deleted clones of the compatibility group due to their phenotypic and genotypic combined proximity to other genotypes of the groups.

of clone 186. Similarly, Maia *et al.* (2011) obtained two groupings for 36 progenies of *T. grandiflorum* using the Tocher method (RAO, 1952) based only on phenotypic data. Santos *et al.* (2005) found low genetic diversity among 30 cocoa clones based on the RAPD markers and genealogy information, which can also be attributed to the strong genetic relation among most of the studied materials. Studies of cupuassu diversity based on phenotypic data were performed by Araújo *et al.* (2002), Maia *et al.* (2011), and Santos *et al.* (2015), among others, and obtained a reasonable phenotypic divergence, with the number of groups varying between two and seven, according to several grouping methods.

The lack of correlation between the matrices of genotypic and phenotypic distances was also observed in sweet potatoes (Koussao *et al.* 2014) and yellow passion fruit (Reis *et al.* 2011). The weak association between the morphological and molecular data is due to the fact that the microsatellite markers represent only a small part of the genome and did not come from the same genomic regions that are relevant to the phenotypic expression of the variables measured. Moreover, molecular markers have been assumed to be selectively neutral, while the parts of the genome associated with phenotypic expression are subject to selection under environmental influence (Collard *et al.* 2005; Alves *et al.* 2013).

The correlations between the matrices of combined distances and based on the genotypic and phenotypic information, at high (0.80) and moderate (0.58) levels, suggest that genetic diversity analysis based on the sum of the matrices can be an important tool to cumulatively allocate genotypic and phenotypic informations, as it keeps high correlation with both the matrices (Alves *et al.* 2013). In addition, an average similarity >50% was observed, indicating that the variability among cupuassu clones is limited.

The compatibility between related individuals was low, while that among unrelated individuals was 81%. The results are a further demonstration that the genetic distance between parents favors fruit set. The average overall compatibility among clones presented in this research is in agreement with the results obtained by Silva *et al.* (2004) and Alves *et al.* (2007).

The detected genetic diversity will be useful to the cupuassu breeding program, and the genotypic evaluations in relation to the fruit yield and resistance to *M. perniciosa* should be intensified so that some of these clones can be recommended to the productive sector in the future. However, this detected diversity will not be sufficient to support, in the long term, the cupuassu breeding program. With increasing acreage must occur the emergence of new pathogens. There is also a need to improve the productivity and quality of pulp and seeds to meet the future demands of the agribusiness sector. For cocoa, similar results as ours have been reported by Faleiro

et al. (2001), who studied the clonal varieties recommended to the cocoa producers.

For the continuity of the cupuassu breeding program, these clones could be used in controlled crossings; however, some care must be taken in relation to the restricted ancestry of the parents of these clones. Table 4 reports that the crossings would be more feasible when taking into account the genotypic and phenotypic distances, especially the combination of both in the identification of combinations that could possibly lead to a greater heterotic vigor. Excluding the clones that have been already released (174, 186, and 215), the group of seven clones, from 32, 42, 44, 46, 51, 57, and 64, seem to be the most promising for recommendation to the breeding programs. The remaining clones 47, 48, 56, 61, 63, and 1074 were discarded.

CONCLUSIONS

We found a reasonable divergence among the 16 studied clones of cupuassu, *T. grandiflorum*, despite their being genetically related. Based on the compatibility rates, and on the genotypic, phenotypic, and combined genotypic/phenotypic distances among the clones, we characterized and selected the most promising sets of genotypes to guide the breeding programs of *T. grandiflorum*.

ACKNOWLEDGMENTS

We thank the Embrapa Eastern Amazonia support staff for their assistance during the experiments. This research was supported by the Conselho Nacional de Desenvolvimento Científico e Tecnológico (CNPq). VSS thanks the Coordenação de Aperfeiçoamento de Pessoal de Nível Superior (CAPES) for his doctoral scholarship.

REFERENCES

- Alexandre, R.S.; Chagas, K.; Marques, H.I.; Costa, P.R.; Filho, J.C. 2015. Caracterização de frutos de clones de cacaueiros na região litorânea de São Mateus, E.S. *Revista Brasileira Engenharia Agrícola Ambiental*, 19: 785-790.
- Almeida, C.M.V.C; Dias, L.A.S; Silva, A.P. 2009. Caracterização agrônômica de acessos de cacau. *Pesquisa Agropecuária Brasileira*, 44: 368-373.
- Alves, A.A.; Bhering, L.L.; Rosado, T.B.; Laviola, B.G.; Formighieri, E.F.; Cruz, C.D. 2013. Joint analysis of phenotypic and molecular diversity provides new insights on the genetic variability of the Brazilian physic nut germplasm bank. *Genetics and Molecular Biology*, 36: 371-381.
- Alves, R.M.; Artero, A.S.; Sebbenn, A.M.; Figueira, A. 2003. Mating system in a natural population of *Theobroma grandiflorum* (Willd. ex Spreng.) Schum., by microsatellite markers. *Genetics and Molecular Biology*, 26: 373-379.
- Alves, R.M.; Artero, A.S.; Sebbenn, A.M.; Clement, C.; Figueira, A. 2007. High levels of genetic divergence and inbreeding in

- populations of cupuassu, *Theobroma grandiflorum*. *Tree Genetics & Genomes*, 3: 289-298.
- Alves, R.M.; Resende, M.D.V. de; Bandeira, B. dos S.; Pinheiro, T.M.; Farias, D.C.R. 2009. Evolução da vassoura de bruxa e avaliação da resistência em progênies de cupuaçuzeiro. *Revista Brasileira de Fruticultura*, 31: 1022-1032.
- Alves, R.M., Resende, M.D.V. de, Bandeira, B. dos S., Pinheiro, T.M., Farias, D.C.R. 2010. Avaliação e seleção de progênies de cupuaçuzeiro (*Theobroma grandiflorum*), em Belém, Pará. *Revista Brasileira de Fruticultura*, 32: 204-212.
- Aneja, M.; Gianfagna, T.; Ng, E.; Badilla, I. 1994. Carbon-dioxide treatment partially overcomes self-incompatibility in a cocoa genotype. *Hortscience*, 29: 15-17.
- Araújo, D.G.; Carvalho, S.P.; Alves, R.M. 2002. Divergência genética entre clones de cupuaçuzeiro (*Theobroma grandiflorum* Willd ex Spreng Schum). *Ciência e Agrotecnologia*, 26: 13-21.
- Cargnelutti Filho, A.; Storck, L.; Ribeiro, N.D. 2009. Agrupamento de cultivares de feijão em presença e em ausência de multicolinaridade. *Ciência Rural*, 39: 2409-2418.
- Collard, B.C.Y.; Jahufer, M.Z.Z.; Brouwer, J.B.; Pang, E.C.K. 2005. An introduction to markers, quantitative trait loci (QTL) mapping and marker-assisted selection for crop improvement: the basic concepts. *Euphytica*, 142: 169-196.
- Corrar, L.J.; Paulo, E.; Dias Filho, J.M. 2007. *Análise multivariada: para os cursos de administração, ciências contábeis e economia*. Atlas, São Paulo, 542p.
- Creste, S.; Tullmann-Neto, A.; Figueira, A. 2001. Detection of single sequence repeat polymorphisms in denaturing polyacrylamide sequencing gels by silver staining. *Plant Molecular Biology Reporter*, 19: 299-306.
- Cruz, C.D.; Ferreira, F.M.; Personi, L.A. 2011. *Biometria aplicada ao estudo da diversidade genética*. Visconde do Rio Branco: Suprema, 620p.
- Cruz, C.D. 2013. GENES - a software package for analysis in experimental statistics and quantitative genetics. *Acta Scientiarum Agronomy*, 35: 271-276.
- Cruz, C.D.; Carneiro, P.C.S.; Regazzi, A.J. 2014. *Modelos Biométricos Aplicados ao Melhoramento Genético*, v.2, 3rd ed. UFV, Viçosa, 668p.
- Doyle, J.J.; Doyle, J.L. 1990. Isolation of plant DNA from fresh tissue. *Focus*, 12: 1315.
- Falcão, M.A.; Morais, R.R. de; Clement, C.R. 1999. Influência da vassoura de bruxa na fenologia do cupuaçuzeiro. *Acta Amazônica*, 29: 13-19.
- Faleiro, F.G.; Lopes, U.V.; Yamada, M.M.; Pires, J.L.; Bahia, R.C.S.; Santos, R.S.; et. al. 2001. Caracterização de variedades clonais de *Theobroma cacao* L. com base em marcadores RAPD, AFLP e microssatélites. *Agrotrópica*, 13: 79-86.
- Figueira, A.; Lambert, S.V.; Carpenter, D.; Pires, J.L.; Cascardo, J.C.M.; Romanczyk, L. 1997. The similarity of cocoa flavor of fermented seeds from fingerprinted genotypes of *Theobroma cacao* from Brazil and Malaysia. *Tropical Agriculture*, 74: 132-139.
- Franco, J.; Crossa, J.; Díaz, J.; Taba, S.; Villaseñor, J.; Eberhart, S.A. 1997. A sequential clustering strategy for classifying gene bank accessions. *Crop Science*, 37: 1656-1662.
- Koussao, S.; Gracen, V.; Asante, I.; Danquah, E.Y.; Ouedraogo, J.T.; Baptiste, T.J.; Vianney, T.M. 2014. Diversity analysis of sweet potato (*Ipomoea batatas* [L.] Lam) germplasm from Burkina Faso using morphological and simple sequence repeats markers. *African Journal of Biotechnology*, 13: 729-742.
- Lanaud, C.; Risterucci, A.M.; Pieretti, I.; Falque, M.; Bouet, A.; Lagoda, P.J.L. 1999. Isolation and characterization of microsatellites in *Theobroma cacao* L. *Molecular Ecology*, 8: 2141-2143.
- Machado, G.M.E.; Regazzi, A.J.; Viana, J.M.S.; Cruz, C.D.; Granate, M.J. 2002. Estimação de parâmetros genéticos de uma população amazônica de cupuaçuzeiro (*Theobroma grandiflorum* (Willd ex Spreng) Schum). *Revista Ceres*, 49: 13-27.
- Maia, M.C.C.; Resende, M.D.V.; Oliveira, L.C.; Alves, R.M.; Silva Filho, J.L.; Rocha, M.M.; Cavalcante, J.J.V.; Roncato, G. 2011. Análise genética de famílias de meios-irmãos de cupuaçuzeiro. *Pesquisa Florestal Brasileira*, 31: 123-130.
- Milligan, G.W.; Cooper, M.C. 1985. An examination of procedures for determining the number of clusters in a data set. *Psychometrika*, 50: 159-179.
- Mojena, R. 1977. Hierarchical grouping methods and stopping ruler: an evaluation. *The Computer Journal*, 20: 359-363.
- Montgomery, D. C., Peck, E. A., Vining, G. G. 2001. *Introduction to linear regression analysis*, 3rd ed. John Wiley & Sons, New York, 672p.
- Pugh, T.; Fouet, O.; Risterucci, A.A.; Brottier, P.; Abouladze, M.; Deletrez, C. et. al. 2004. A new linkage map based on codominant markers: development and integration of 201 new microsatellite markers. *Theoretical and Applied Genetics*, 108: 1151-1161.
- Rao C.R. 1952. *Advanced statistical methods in biometric research*. John Wiley & Sons, New York, 390p.
- Ramos, A.R.; Venturiere, G.; Cuco, S.M.; Castro, N.M. 2005. The site of self-incompatibility action in cupuassu (*Theobroma grandiflorum*). *Revista Brasileira Botânica*, 28: 569-578.
- Regazzi, A.J.; Machado, G.M.E.; Viana, J.M.S.; Cruz, C.D.; Granate, M.J. 2002. Avaliação da divergência genética em uma população amazônica de cupuaçuzeiro (*Theobroma grandiflorum* (Willd ex Spreng) Schum) por procedimentos multivariados. *Revista Ceres*, 49: 265-281.
- Reis, R.V.D.; Viana, A.P.; Oliveira, E.J.D.; Silva, M.G.D.M. 2012. Phenotypic and molecular selection of yellow passion fruit progenies in the second cycle of recurrent selection. *Crop Breeding and Applied Biotechnology*, 12: 17-24.
- Rodrigues, T. E.; Santos, P. L. dos; Roilim, P. A. M.; Santos, E.; Rego R. S.; Silva, J. M. L. da; Valente, M. A.; Gama, J. R. N. 2001. Caracterização e Classificação dos Solos do Município de Tomé-Açu, PA. (<http://www.infoteca.cnptia.embrapa.br/handle/doc/403598>). Accessed on 01 Sep 2016.
- Santos, R.C.; Pires, J.L.; Lopes, U.V.; Gramacho, C.P.G.; Flores, A.B.; Bahia, R.C.S.; Ramos, H.C.C.; Corrêa, R.X.; Ahnert, D. 2005. Assessment of genetic diversity on a sample of cocoa accessions resistant to witches' broom disease based on RAPD and pedigree data. *Bragantia*, 64: 361-368.

- Santos, R.C.; Pires, J.L.; Córrea, R.X. 2011 Morphological characterization of leaf, flower, fruit and seed traits among Brazilian *Theobroma* L. species. *Genetic Resources and Crop Evolution*, 59: 327-345.
- Santos, V.S.; Martins Filho, S.; Alves, R.M.; Resende, M.D.V.; Silva, F.F. 2015. Genetic divergence among cupuaçu accessions by multiscale bootstrap resampling. *Bragantia*, 74: 169-175.
- Silva, C. R. S., Venturieri, G. A., Figueira, A. 2004. Description of Amazonian *Theobroma* L. collections, species identification, and characterization of interspecific hybrids. *Acta Botanica Brasilica*, 18: 333-340.
- Souza, A.G.C.; Resende, M.D.V.; Silva, S.E.L.; Souza, N.R. 2002. The cupuaçuzeiro genetic improvement program at Embrapa Amazonia Ocidental. *Crop Breeding and Applied Biotechnology*, 2: 471-478.
- Venturieri, G.A. 2011. Flowering levels, harvest season and yields of cupuassu (*Theobroma grandiflorum*). *Acta Amazonica*, 41: 143-152.
- Zapata, R.T.; Arroyo, M.T.K. 1978. Plant reproductive ecology of a secondary tropical deciduous forest in Venezuela. *Biotropica*, 10: 221-230.

Received: 25/07/2016

Accepted: 12/06/2017

