



## Determination of genetic variability of traditional varieties of Brazilian rice using microsatellite markers

Claudio Brondani, Tereza Cristina Oliveira Borba, Paulo Hideo Nakano Rangel and Rosana Pereira Vianello Brondani

*Empresa Brasileira de Pesquisa Agropecuária Arroz e Feijão, Santo Antônio de Goiás, GO, Brazil.*

### Abstract

The rice (*Oryza sativa*) breeding program of the Rice and Bean research center of the Brazilian agricultural company Empresa Brasileira de Pesquisa Agropecuária (Embrapa) is well established and provides new cultivars every year to attend the demand for improved high yielding varieties with tolerance to biotic and abiotic stresses. However, the elite genitors used to compose new populations for selection are closely related, contributing to the yield plateau reached in the last 20 years. To overcome this limit, it is necessary to broaden the genetic basis of the cultivars using diverse germplasm such as wild relatives or traditional varieties, with the latter being more practical because they are more easily crossed with elite germplasm to accelerate the recovery of modern plant types in the breeding lines. The objective of our study was to characterize the allelic diversity of 192 traditional varieties of Brazilian rice using 12 simple sequence repeat (SSR or microsatellite) markers. The germplasm was divided into 39 groups by common name similarity. A total of 176 alleles were detected, 30 of which (from 23 accessions) were exclusive. The number of alleles per marker ranged from 6 to 22, with an average of 14.6 alleles per locus. We identified 16 accessions as a mixture of pure lines or heterozygous plants. Dendrogram analysis identified six clusters of identical accessions with different common names and just one cluster with identical accessions with the same common name, indicating that SSR markers are fundamental to determining the genetic relationship between landraces. A subset of 24 landraces, representatives of the 13 similarity groups plus the 11 accessions not grouped, was the most variable set of genotypes analyzed. These accessions can be used as genitors to increase the genetic variability available to rice breeding programs.

*Key words:* Brazil, genetic resources, microsatellite markers, *Oryza sativa*.

Received: August 16, 2005; Accepted: March 15, 2006.

### Introduction

Rice (*Oryza sativa*) genetic resources are widely available worldwide, this crop being cultivated between latitudes 55° N and 36° S in a variety of ecosystems, including irrigated, rainfed lowland, rainfed upland and flood-prone areas. Human selection and crop adaptation to diverse environmental conditions have resulted in a large number of genotypes, and it has been estimated that about 120,000 rice varieties exist in worldwide (Khush, 1997). Rice production doubled between 1966 and 1990 due to the proliferation of highly productive cultivars, but the use of elite germplasm in breeding programs reduced the genetic variability available for selection and is believed to be the main factor for the leveling off of yield (Rangel *et al.*, 1996). In addition, limited genetic diversity has led to increased disease susceptibility and an increase in insect

pests. The use of rice genetic resources available at genebanks is an important strategy for incorporating genetic variability into rice breeding programs, which can potentially generate new cultivars with broadened genetic basis and allows new and useful allelic combinations (McCouch, 2005). Crosses to broaden the genetic basis of rice also can promote the preservation of rare alleles that can be incorporated in elite germplasm. The use of adapted rice landraces, as the primary source of variation into which desired characters present in modern cultivars are introgressed may be an effective strategy for producing cultivars adapted to difficult production environments (Hawtin *et al.*, 1997).

Rice is a very important source of carbohydrate and protein for Brazilians which was probably introduced to Brazil during Portuguese colonization around 1550 (Pereira, 2002). Subsequent cultivation has generated many local Brazilian varieties (landraces) adapted to different environments, resulting in a regional fixation of distinctly favorable alleles. To preserve this genetic variability, more than

3,000 traditional Brazilian accessions have been collected during the last 30 years. These accessions are representatives of a variety of soil and climate conditions, including low temperatures in the South Region of Brazil, saline and dry soils in the Brazilian Northeast and low fertility acid soils in the Cerrado (Brazilian savanna) Region (Burle *et al.*, 2001).

For the effective conservation of rice genetic resources it is important to characterize genetic variability in order to assist germplasm bank curators to preserve genetic diversity and for breeders to use it effectively (Olufowote *et al.*, 1997). Speed, reproducibility and the ability to detect genetic variation within and between accessions determine the utility of molecular techniques for germplasm bank management (Gilbert *et al.*, 1999). The increasing availability of highly polymorphic genetic markers and the decreasing cost of genotyping provide powerful tools for finding the true biological relationship between individuals (Presciuttini *et al.*, 2002). Simple sequence repeat (SSR or microsatellite) markers provide a higher level of information compared with other classes of molecular markers (Rafalski *et al.*, 1996). In rice, more than 2,000 SSR markers are available from SSR-enriched libraries and from the sequenced rice genome (McCouch *et al.*, 2002). This high number of markers permits the selection of the most informative and well-distributed SSR loci in the rice genome to be used in molecular analysis.

In the work described in this paper we used SSR markers to infer genetic variability in rice landraces with the objective of characterizing the allelic diversity of a single set of landraces from the entire collection of Brazilian rice landraces.

## Material and Methods

### Plant material

We investigated 192 Brazilian rice landrace accessions stored at the Rice and Bean Germplasm Bank at the Rice and Bean Research Center of the Brazilian agricultural company Empresa Brasileira de Pesquisa Agropecuária (Embrapa Arroz e Feijão, Santo Antônio de Goiás, GO, Brazil). The accessions were divided into 39 groups based on their common names, but 44 accessions were not included in any of these groups (Table 1).

### DNA extraction and SSR analysis

For each accession, DNA was extracted from the leaves of five plants, quantified and adjusted to a final concentration of 3 ng  $\mu\text{L}^{-1}$  using the protocol described by Brondani *et al.* (2002). Two five-plant pools were made for each of the 192 accessions. The pooled DNA was used as a template for the SSR PCR reactions.

To select suitable SSR markers we used 40 SSR markers with high PIC values to genotype four rice genotypes (cultivars Cica-8, BR Irga 409, Primavera and BRS

Colosso) in order to select the SSR markers showing the most desirable characteristics (highest polymorphism, good band resolution and good distribution as regards all twelve rice chromosomes), the genotyping being carried out as described in the next paragraph. The codes of the primers selected were the following: RM9, RM11, RM22 (Panaud *et al.*, 1996); RM204, RM207, RM223, RM229, RM247, RM252 (Chen *et al.*, 1997); RM310 (Temnykh *et al.*, 2000); and OG61 and OG106 (Brondani *et al.*, 2001).

The PCR reactions were conducted in a final volume of 13  $\mu\text{L}$  containing 0.3  $\mu\text{M}$  of each primer, 1 unit of *Taq* DNA polymerase, 0.2 mM of each dNTP, 1 mM TRIS-HCl (pH 8.3), 50 mM KCl, 1.5 mM  $\text{MgCl}_2$ , 1.3  $\mu\text{L}$  of DMSO (50% w/v) and 7.5 ng of template DNA. The PCR was performed in a PT-100 thermocycler (MJ Research) programmed for one pre-cycle at 96 °C for 5 min, followed by 30 cycles of 94 °C for 1 min, 56 °C for 1 min and 72 °C for 1 min, with a final extension at 72 °C for 7 min. Amplification was checked by horizontal electrophoresis in 3.5% (w/v) agarose gel containing TBE (0.09 M TRIS-Borate and 2 mM EDTA, pH 8.3) and 0.2  $\mu\text{g mL}^{-1}$  ethidium bromide. Allelic polymorphism was detected in 4% (w/v) denaturing polyacrylamide gels containing 7M urea and 1x TBE buffer, bands being visualized using silver staining (Bassam *et al.*, 1991).

### Statistical analysis

The number of alleles per locus and polymorphism information content (PIC) were estimated using the Genetic Data Analysis program (Lewis and Zaykin, 2000). The estimates of probability of identity (PI) were obtained using the Identity program (Sefc *et al.*, 1997). The dendrogram was constructed from the genetic distance matrix obtained by Rogers distance as modified by Wright (1978), hereafter named Rogers-W distance coefficient. The accessions were grouped by cluster analysis using the unweighted pair group method with averages (UPGMA) (Weir, 1990) as implemented in the Numerical Taxonomy and Multivariate Analysis System (NTSYS) program (Rohlf, 1989). Tocher's optimization method was performed using the Genes program (Cruz, 1997).

## Results and Discussion

Traditional rice varieties, or landraces, have a high level of genetic heterogeneity compared to modern cultivars. This genetic variability is very important for the sustainability of small farmers, because despite the low yield capacity, these varieties present high yield stability (Oka, 1991). Landraces are adapted to local, small-scale, low-input environments where the plant ideotype may differ considerably from that developed for modern agricultural systems (Veteläinen *et al.*, 1997). The evaluation of the genetic variability of accessions of landraces can provide the basic information necessary to help genbanks mul-

**Table 1** - Brazilian rice landraces used in the simple sequence repeat (SSR) analysis. The landraces were grouped according to the similarity based of their common names. The state where the landraces were collected is shown in the third column and the cluster code in the dendrogram in the fourth column.

Group	Common name	State*	Cluster	Group	Common name	State*	Cluster	Group	Common name	State*	Cluster	Group	Common name	State*	Cluster
1	1) 3 Meses	GO	A	7	49) Branco 4 Meses	GO	A	24	97) Guaira	GO	A	39	145) Zebu	PI	A
	2) 3 Meses Curto	MG	A		50) Branco Longo Precoce	SP	A		98) Guaira Amarelo	GO	A		146) Zebu Branco	MA	A
	3) 3 Meses Precoce	GO	B		51) Branquinho	BA	-		99) Guaira Branco	GO	A		147) Zebu Ligeiro	PI	A
	4) 4 Meses	GO	A	8	52) Brejeiro	MG	-	25	100) IAC do Produtor	MS	A		148) Zebu Pingo d'agua	RR	A
	5) 4 Meses Antigo	MT	A		53) Brejeiro	MG	E		101) IAC 1246	RO	A		149) Bacaba	PI	A
	6) 60 Dias	GO	A	9	54) Buriti	PI	A		102) IAC 47	MS	A		150) Bambu	RO	A
	7) 90 Dias	AL	A		55) Buriti Vermelho	MA	E		103) IAC 25 Branco	PI	M		151) Barriga Branca	MG	B
	8) Noventinha	MS	B	10	56) Caiana Grande	AL	J	26	104) IR-8	PI	K		152) Batatais	PR	A
	9) 100 Dias	GO	A		57) Cana Roxa	GO	A		105) IR-8 do Padre	PI	K		153) Beira Campo	MT	A
	10) De Abril	RJ	J		58) Cana Roxa Vermelha	MA	A	27	106) Japonês	RS	-		154) Boliviano	MT	A
2	11) De Maio	MS	J	11	59) Canela de Aço	AC	A		107) Japonês	CE	A		155) Cacho Grande	MT	A
	12) Agulha	CE	B		60) Canela de Ferro	AC	-		108) Japonês Claro	RO	B		156) Carijó	GO	A
	13) Agulha	MT	A	12	61) Carioca	RJ	A	28	109) Ligeirinho	PI	D		157) Casca Branca	MG	A
	14) Agulha	MT	A		62) Carioquinha	GO	E		110) Ligeiro	MA	F		158) Chifre de Veado	MS	A
	15) Agulha Amarelo	AM	A		63) Carioquinha Amarelo	GO	A		111) Ligeiro Vermelho	PI	B		159) Comprido	GO	A
	16) Agulha Vermelho	CE	M		64) Carioquinha Areia	GO	G	29	112) Macaba Ligeiro	PI	B		160) Comum	GO	A
	17) Agulhão	AL	J		65) Carioquinha Vermelho	GO	A		113) Macaba Maranhense	PI	B		161) De Morro	ES	A
	18) Agulhão	RR	A	13	66) Carolina	PI	A		114) Macaba Míúdo	PI	K		162) Dez Anos	MT	A
	19) Agulhão	RO	A		67) Carolina Bico Preto	MS	A		115) Macapa	PI	B		163) Doidão	ES	J
	20) Agulhão	RO	K		68) Carolina Longo	MS	A	30	116) Maranhão	PI	B		164) Escrevim	PI	J
3	21) Agulhinha	AC	I	14	69) Casado	MA	A		117) Maranhão Branco	PI	B		165) Farroupilha	RS	-
	22) Agulhinha Amarelo	MS	I		70) Casado Ligeiro	PI	A		118) Maranhense	PI	B		166) Grão de Ouro	GO	B
	23) Agulhinha Anão	RO	A	15	71) Catetão	MT	-	31	119) Matão	MG	L		167) Guapa	RO	A
	24) Agulhinha do Paraguai	MT	A		72) Catetinho	MG	G		120) Mato Grosso	PI	A		168) Iguapé	GO	A
	25) Agulhinha Vermelho	RR	I		73) Cateto	MT	C	32	121) Meruim	AC	B		169) Jaguari	AM	A

**Table 1 (cont)**

Group	Common name	State*	Cluster	Group	Common name	State*	Cluster	Group	Common name	State*	Cluster	Group	Common name	State*	Cluster		
4	26) Amarelo	MS	A	74)	Cateto Amarelo	PR	H	122)	Meruim Dourado	CE	B	-	170)	Lageado	PI	-	
	27) Amarelo 90 Dias	MS	A	75)	Cateto Bico Preto	SP	A	123)	Meruim II	AC	A	-	171)	Mangote	RJ	B	
	28) Amarelo 3 meses	GO	A	76)	Cateto Seda	SP	H	33	124)	Montanha	AM	A	-	172)	Mineiro	AC	A
5	29) Amarelo Bico Preto	AM	A	16	77) Chatão	AM	A	34	125)	Montanha Potrão	MS	A	-	173)	Miúdo Branco	MA	B
	30) Amarelo Bico Preto 3 Meses	MT	A	78)	Chatão Vermelho	AM	A	34	126)	Mucum	PI	B	-	174)	Namicião	ES	-
	31) Amarelo Precoce	SP	A	79)	Chatinho	AL	J	127)	Muruim	AM	I	-	175)	Pacholinha	RJ	F	
6	32) Amarelinho	GO	A	80)	Chatinho Branco	SE	A	35	128)	Neném	MA	F	-	176)	Paga Divida	PI	L
	33) Amarelo	AM	A	17	81) Chorinho	MG	A	36	129)	Nenezinho Branco	MA	B	-	177)	Palha Murcha	PI	-
	34) Amarelo Bico Preto	GO	A	82)	Chorinho Americano	MG	C	36	130)	Prata	CE	B	-	178)	Patrão	RO	C
7	35) Amarelo Branco	SC	K	83)	Chorinho Apículo Escuro	MG	C	37	131)	Prata Ligeiro	CE	B	-	179)	Paulista	AC	A
	36) Amarelo Precoce	SP	A	18	84) Come Cru	RR	A	38	132)	Prata Roxa	MG	A	-	180)	Peludo	GO	A
	37) Anão	CE	A	85)	Come Cru	PI	A	39	133)	Pratão	MT	C	-	181)	Pindorama	GO	A
8	38) Anão	AL	K	86)	Come Cru Branco	MA	C	40	134)	Pratão	RO	A	-	182)	Pingo de Ouro	PI	B
	39) Anãozinho	TO	I	19	87) Cutiã	PI	A	41	135)	Pratão	MT	A	-	183)	Precoce	BA	-
	40) Bico Ganga	GO	A	88)	Cutiã Vermelho	MA	A	42	136)	Pratão 4 Meses	AM	A	-	184)	Preto	RO	A
9	41) Bico Preto	AC	A	20	89) Douradão	GO	A	43	137)	Pratão Precoce	GO	A	-	185)	Rabo de Carneiro	GO	A
	42) Bico Preto Cana Roxa	MS	A	90)	Douradinho	AC	-	44	138)	Pratinha	GO	D	-	186)	Samambaia	ES	D
	43) Bico Preto Roxo	MA	A	21	91) Ferrão Preto	GO	A	45	139)	Santa América	MT	A	-	187)	Saquarema	PI	K
10	44) Bico Roxo	BA	J	92)	Ferrão Preto Precoce	SP	A	46	140)	Santa América	GO	A	-	188)	Serra Azul	MG	G
	45) Bico Roxo Branco	GO	A	22	93) Ferrugem	MT	A	47	141)	Vermelho Taiano	RR	A	-	189)	Talo Roxo	PB	A
	46) Bico Torto	RS	A	94)	Ferrujão	MS	B	48	142)	Vermelinho	PI	D	-	190)	Tomba Morro	MG	A
11	47) Branco	GO	A	23	95) Goianinho	MS	A	49	143)	Vermelinho 3 Meses	MT	A	-	191)	Toro	PB	E
	48) Branco 3 Meses	MG	A	96)	Goiano	MA	B	50	144)	Vermelho	AC	A	-	192)	Venez Branco	MG	A

\*Brazilian states: Acre (AC) Alagoas (AL), Amapá (AP), Amazonas (AM), Bahia (BA), Distrito Federal (DF), Ceará (CE), Espírito Santo (ES), Goiás (GO), Mato Grosso (MT), Mato Grosso do Sul (MS), Maranhão (MA), Minas Gerais (MG), Pará (PA), Paraná (PR), Pernambuco (PE), Piauí (PI), Rio de Janeiro (RJ), Rio Grande do Norte (RN), Rio Grande do Sul (RS), Rondônia (RO), Roraima (RR), Santa Catarina (SC), São Paulo (SP), Sergipe (SE), Tocantins (TO).

tively and properly conserve these genetic resources. This will also help breeding programs to plan crosses to incorporate this variability into the genetic background of elite rice lines, which in turn will generate new rice cultivars.

In our analysis of SSR variation we detected 176 alleles in the 192 landrace accessions investigated, the number of alleles per marker ranging from 6 (RM22) to 22 (OG61 and OG106), with an average of 14.7 alleles per locus. The PIC varied from 0.33 (RM252) to 0.94 (OG106), with an average of 0.73 (Table 2). The number of alleles and PIC are higher than that reported in previous works (Xu *et al.*, 2004; Yu *et al.*, 2003; Ni *et al.*, 2002; Coburn *et al.*, 2002; Panaud *et al.*, 1996). The higher number of alleles and PIC detected in the present work indicate that the Brazilian rice landraces are a good source of genetic variability to be explored in crosses with elite rice germplasm. We also detected 30 private or exclusives alleles in 23 of the accessions (Table 2). The molecular data were generally correlated with variation at the agro-morphological level in the crop plants and therefore provide good guidance on the distribution of useful variation as well as on the existence of co-adapted gene complexes (Hawtin *et al.*, 1997). Despite the fact that the SSR markers used in our study are considered neutral (*i.e.*, not functionally related to any trait) the genomic fingerprinting profile of each plant does not vary from one environment to another, reflecting the capacity of an individual plant or population to adapt (Virk *et al.*, 1996). This direct association between the fingerprint of an accession and the phenotypic response to a target environment is caused by linkage disequilibrium, which in rice is mainly due to autogamous reproduction (Ford-Lloyd *et al.*,

1997). Another important aspect to consider is the differentiation of characters that are highly subject to natural selection, such as tolerance to biotic and abiotic stresses occurring during the cultivation of rice landraces. In addition, neutral markers can be used to establish the evolutionary past of varietal groups and to account for pre-selection of the germplasm to be used in breeding programs (Glaszmann *et al.*, 1996).

The use of DNA pools from five plants was very effective at evaluating the allelic diversity of the rice accessions and the analysis of two pools per accession detected 16 traditional varieties which were heterogeneous for at least two SSR markers (Table 3). Then a second round of SSR analysis was performed to individually characterize the five individual plants present in one or two pools of each 16 accessions. The pool heterogeneity was more frequently related to the occurrence of homozygous plants for different alleles than to heterozygous plants (Table 3). The accessions Agulha, Japonês, Prata Roxa and Venez Branco showed the highest number of heterogeneous pools (Table 3). Pooling plants is a very important strategy for speeding up the genotyping of landraces, which due to their higher genetic variability requires the analysis of more individual plants for each accession to produce a more realistic evaluation of the variability within the germplasm of a particular accession.

The cluster analysis of 192 accessions produced an average Rogers-W distance coefficient of 0.77, and was used to establish a cut-off threshold to determine the similarity groups of the dendrogram. This limit formed 13 similarity groups (A to M). Eleven accessions were not included

**Table 2** - Chromosomal location (CL), number of alleles, polymorphism information content (PIC), probability of identity (PI) and private alleles detected with 12 simple sequence repeat (SSR) markers used for genotyping 192 rice landrace accessions.

Marker	CL	Alleles	PI	PIC	Private Alleles*
RM9	1	17	0.089	0.82	Saquarema (1; 142 bp), Palha Murcha (1; 144 bp), IAC (0.13; 130 bp), Brejeiro (0.5; 180 bp)
RM207	2	15	0.168	0.75	Japonês (0.32; 112 bp), Chatão (0.23; 132 bp), Cateto (0.08; 110 bp)
RM22	3	6	0.374	0.6	Meruim (0.08; 184 bp)
RM252	4	11	0.467	0.33	Precoce (1; 266 bp), Prata (0.09; 256 bp), Palha Murcha (1; 230 bp), Caiana Grande (0.5; 228 bp)
OG61	5	22	0.042	0.89	Farroupilha (1; 98 bp)
RM204	6	17	0.29	0.54	Nanicão (1; 126 bp), Lageado (1; 120 bp), Goiano (0.25; 134 bp), Agulha (0.04; 156 bp)
RM11	7	14	0.237	0.62	Venez Branco (0.2; 140 bp), Japonês (0.03; 154 bp), Casado (0.5; 134 bp)
RM223	8	10	0.106	0.82	Precoce (1; 170 bp), Japonês (0.05; 150 bp), Branco (0.2; 146 bp)
OG106	9	22	0.013	0.94	-
RM304	10	16	0.062	0.86	Venez Branco (1; 130 bp), Carioca (0.2; 146 bp), Brejeiro (0.5; 120 bp)
RM229	11	9	0.121	0.79	-
RM247	12	17	0.078	0.83	Nanicão (1; 144 bp), Chorinho (0.33; 170 bp), Amarelo (0.05; 150 bp), Agulha (0.08; 152 bp)
Total	-	176	6.2 10 <sup>-12</sup>	-	

\*Parenthesis contain, in order, Allele frequency; band size in base pairs (bp).

**Table 3** - Rice landrace accessions that showed heterogeneous pooled DNA detected by simple sequence repeat (SSR) markers.

Accessions (accession number)	Number of plants <sup>1</sup>	SSR marker
Agulha (12)	10 (2)	RM 204*, RM 207, RM 223, RM 229, RM 247, RM 252, OG 61*
Agulhão (19)	5	RM 9, RM 207, RM 223, OG 106
Bico Preto (41)	10	RM 11, RM 223, RM 252, OG 61, OG 106
Chatinho (79)	10 (1)	RM9, RM 207, RM229, RM 247*, RM 252
Chorinho (81)	10 (2)	RM 247, OG 61*, OG 106*
Come Cru Branco (86)	9	RM 9, RM 11, OG 61, OG 106
De Maio (11)	10	RM 11, RM 207, RM 223, RM 252
Doidão (164)	10 (1)	RM 207*, RM 223
Japonês (107)	10 (1)	RM 11*, RM 207, RM 229, RM 247, RM 252, OG 61, OG 106
Japonês Claro (108)	8	RM 9, RM 11, RM 304, OG 106
Macaba Marenhense (113)	8 (2)	RM 9, RM 11*, RM 22, RM 223*, OG 106*
Mato Grosso (120)	9	RM 22, RM 207, OG 61, OG 106
Meruim II (123)	10	RM 9, RM 11, RM 22, RM 223, RM 229
Prata Roxa (132)	8 (1)	RM 207*, RM 229, RM 247, RM 252*, RM 304*, OG 61, OG 106*
Serra Azul (188)	9	RM 9, RM 11, RM 223
Venez Branco (192)	10	RM 11, RM 207, RM 229, RM 247, RM 252, OG 61, OG 106

<sup>1</sup>The number of plants of the DNA pool in heterozygosis is shown between parenthesis.

\*Markers that detected heterozygous plants.

in similarity groups: Catetão (accession 71), Brejeiro (52), Douradinho (90), Branquinho (51), Canela de Ferro (60), Farroupilha (165), Japonês (106), Palha Murcha (177), Nanicão, (174) Lajeado (170), and Precoce (183) (Table 1). Group A was formed by 135, or 70% of analyzed accessions, and included representatives of 31 common name groups. Some common name groups containing few accessions clustered in the same similarity group: De Maio and De Abril (group J), Carolina (group A), Casado (group A), Cutiã (group A), Ferrão Preto (group A), IR-8 (group K), Macabá (group B), Maranhão (group B), Montanha (group A), Santa América (group A) and Zebu (group A). Nevertheless, in groups with a higher number of accessions, such as Meses, Agulha, Amarelo, among others, the accessions were distributed in different similarity groups (Table 1).

Six clusters were composed of identical accessions: 1) Cacho Grande (155), Dez Anos (162), Carolina (66) and Chatão (77); 2) Bico Roxo (45), Bico Torto (46) and Branco (47); 3) Guapa (167) and IAC 1246 (101); 4) Mineiro (172) and Montanha (124); 5) Paulista (179), Pindorama (181) and Prata 4 Meses (136); and 6) Guaira (97) and Guaira Amarelo (98) (data not shown). The entire set of SSR markers used in this work produced a combined probability of identity (PI) of  $6.2 \times 10^{-12}$  (Table 2), which is the probability of having two individuals with the same genotype in a group of accessions. The fact that the PI value is very low indicates that the accessions of the seven clusters cited above are identical despite their different common names, it being already known that the two Guaira accessions (97 and 98) are identical. The most common case observed in our study was accessions with the same name that

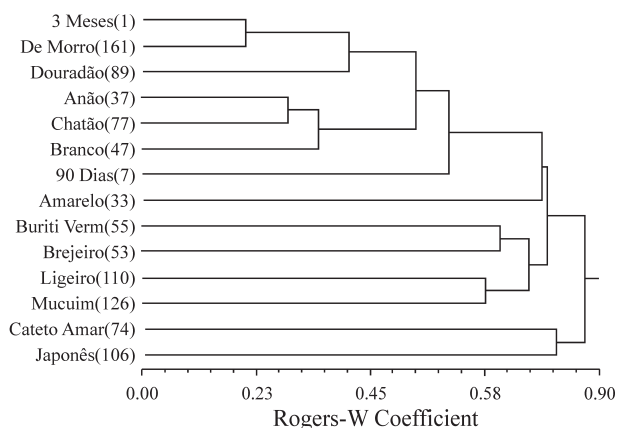
were not genetically identical. This probably occurred for two reasons: a) When a farmer gives the name of the landrace to the germplasm collector, the farmer is influenced by the name used regionally for the accession, so although names can vary from county to county the germplasm can be the same or b) due to events operating independently or simultaneously, *e.g.* seed mixture, cross pollination, selection and genetic drift caused by reduced sampling of seeds to be used in the next rice crop season. In this last case, occurring in specific environments, an original landrace or old variety released to different farmers, after years of successive cultivation, would generate populations with a genetic constitution different from the original genotype. This adaptation, *i.e.* the movement of a population towards a phenotype that best fits the population within a specific environment, may select the best gene or gene combinations which can be explored by breeding programs.

We used Tochers optimization method to identify the most variable accessions present in the entire set of 192 genotypes and to appreciate the extent of genetic variability and select a starting point (*i.e.* accession, or accessions) within the collection for a breeding program. This test was conducted using the SSR marker genetic distance values of all pairwise combinations of the 192 genotypes. The final set of genotypes obtained by Tocher's method yielded 14 accessions, with an average Rogers-W distance coefficient of 0.76, similar to the average Rogers-W distance coefficient of 0.77, obtained when the 192 genotypes were analyzed (Figure 1). However, we observed that of the 14 accessions, eight (3 Meses, De Morro, Douradão, Anão, Chatão, Branco, 90 Dias and Amarelo) had previously been

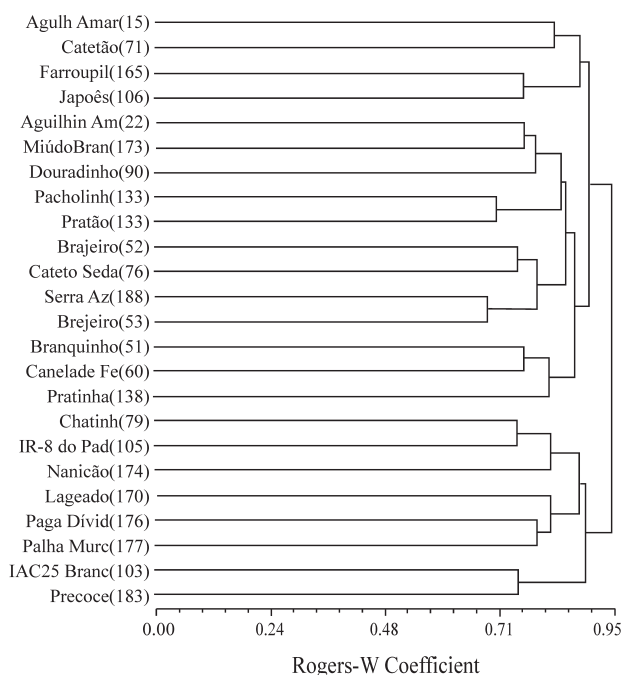
classified in similarity Group A, two (Buriti Vermelho and Brejeiro) in Group E, one (Ligeiro) in group F, one (Mucuim) in group B, one (Cateto Amarelo) in group H and one (Japonês) had not been included in any similarity group (Figure 1).

When we analyzed a set of genotypes (one representative of each of 13 similarity groups plus the 11 ungrouped accessions) we obtained a Rogers-W distance coefficient average of 0.90, higher than the entire set of 192 and 14 accessions from Tocher's method (Figure 2). This result clearly shows that an efficient way to select genetically distinct genotypes in a large collection of germplasm is to first analyze all accessions and then choose representative accessions from each cluster. In order to decide which ac-

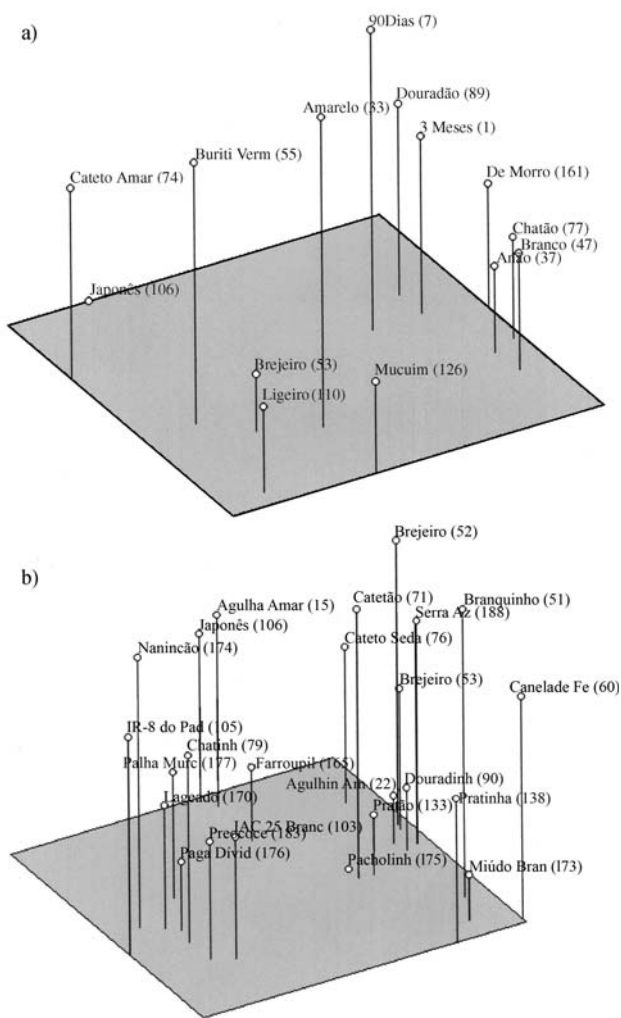
cession should be chosen from each group, agronomic performance traits should be effective in selecting genotypes that will produce potentially even better results in breeding programs. All sets of accessions were well distributed spatially according to principal component analysis (Figure 3). In terms of genetic variability based on SSR marker genotyping we recommended the 24 accessions (set of accessions representative of each similarity group plus the unclassified accessions) for use as genitors in crosses with the elite rice genotypes to increase the genetic variability available for selection, and also to increase the possibility of detecting transgressive segregation. However, for such variability results in effective genetic gain, further experiments, such as diallel crosses, should be carried out to determine the combining ability of the traditional varieties and to prove that the genetic variability found with SSR markers is effectively related to good field performance of lines derived from elite x traditional variety crosses.



**Figure 1** - Dendrogram based on Rogers-W distance coefficient of a subset of 14 rice landraces.



**Figure 2** - Dendrogram based on Rogers-W distance coefficient of a subset of 24 rice landraces.



**Figure 3** - Principal component analysis of: a) 14 rice landrace accessions, and b) 24 rice landrace accessions.

One of the implications of SSR analysis for landrace conservation is that the genotyping of landraces can detect differences that cannot be detected by traditional methods of morphological characterization used routinely in genebanks. At Embrapa Rice and Bean, 12 morphological descriptors, which are traits with high heritability, such as pilosity of the leaves, presence of awns, etc., are used for rice (Fonseca *et al.*, 1981). Another relevant aspect of genotyping using molecular markers, particularly SSRs, is the ability of this methodology not only to analyze many accessions simultaneously but also to investigate individual plants of a specific accession. The knowledge of within-accession variability is important for conservation purposes, because it is possible to determine the most genetically variable accessions which would demand an additional effort of sampling a higher quantity of seeds in order to preserve this genetic variability and prevent genetic drift during routine periodic germplasm multiplication. The analysis of individual plants of an accession is also relevant for breeding purposes, since homozygous plants can be selected and used as genitors in crosses with elite rice genotypes. The *ex situ* collection of Embrapa Genebank is preserving for the future the genetic variability of many landraces that are no longer cultivated by farmers. At the beginning of the 1970s the estimated number of rice varieties cultivated by Brazilian farmers was around 3,000 (Fonseca *et al.*, 1982). There are no estimates of the cultivated varieties today but there is a consensus that the number is much lower than that, following the falling trend in the number of small farmers who traditionally cultivate landraces. Due to the size of Brazil, there are regions that still need to be included in collection expeditions, in order to increase the Brazilian sampling coverage of such valuable germplasm.

## Acknowledgments

Tereza Cristina Oliveira Borba was the recipient of a scholarship from the Brazilian agency Conselho Nacional de Desenvolvimento Científico e Tecnológico (CNPq).

## References

- Bassam BJ, Caetano-Anolles G and Gresshoff PM (1991) Fast and sensitive silver staining of DNA in polyacrylamide gels. *Anal Biochem* 196:80-83.
- Brondani C, Brondani RPV, Rangel PHN and Ferreira ME (2001) Development and mapping of *Oryza glumaepatula*-derived microsatellite markers in the interspecific cross *O. glumaepatula* x *O. sativa*. *Hereditas* 134:59-71.
- Brondani C, Rangel PHN, Brondani RPV and Ferreira ME (2002) QTL mapping and introgression of yield-related traits from *Oryza glumaepatula* to cultivated rice (*Oryza sativa*) using microsatellite markers. *Theor Appl Genet* 104:1192-1203.
- Burle MB, Fonseca JR, Alves RBN, Cordeiro CMT, Freire MS, Melo LAMP, Rangel PHN and Silva HT (2001) Caracterização de Germoplasma de Arroz de Acordo com o Ambiente de Origem: Mapeamento em SIG. Série Documentos n. 63, Embrapa, Brasília, 51 pp.
- Chen X, Temnykh S, Xu Y, Cho YG and McCouch SR (1997) Development of a microsatellite framework map providing genome-wide coverage in rice (*Oryza sativa* L.). *Theor Appl Genet* 95:553-567.
- Coburn JR, Temnykh SV, Paul EM and McCouch SR (2002) Design and application of microsatellite marker panels for semiautomated genotyping of rice (*Oryza sativa* L.). *Crop Sci* 42:2092-2099.
- Cruz CD (1997) Programa Genes: Aplicativo Computacional em Genética e Estatística. Editora UFV, Viçosa, 442 pp.
- Fonseca JR, Rangel PHN and Prabhu AS (1981) Características botânicas e agronômicas de cultivares de arroz (*Oryza sativa* L.). Circular Técnica n. 14, Embrapa, Goiânia, 32 pp.
- Fonseca JR, Rangel PHN, Bedendo IP, Silveira PM, Guimarães EP and Coradin L (1982) Características botânicas e agronômicas de cultivares e raças regionais de arroz (*Oryza sativa* L.) coletadas no Estado do Maranhão. *Boletim de Pesquisa* n. 1, Embrapa, Goiânia, 42 pp.
- Ford-Lloyd BV, Jackson MT and Newbury HJ (1997) Molecular markers and the management of genetic resources in seed genebanks: A case study of rice. In: Callow JA, Ford-Lloyd BV and Newbury HJ (eds) *Biotechnology and Plant Genetic Resources – Conservation and Use*. CAB, Wallingford, pp 103-118.
- Glaszmann JC, Mew T, Hibino H, Kim CK, Dios-Mew TIV, Cruz CMV, Notteghem JL and Bonman JM (1996) Molecular variation as a diverse source of disease resistance in cultivated rice. *Proceedings of the Third International Rice Genetics Symposium, Manila, Philippines*, pp 460-465.
- Gilbert JE, Lewis RV, Wilkinson MJ and Caligari PDS (1999) Developing an appropriate strategy to assess genetic variability in plant germplasm collections. *Theor Appl Genet* 98:1125-1131.
- Hawtin G, Iwanaga M and Hodgkin T (1997) Genetic resources in breeding for adaptation. In: Tigerstedt PMA (ed) *Adaptation in Plant Breeding*. Kluwer, New York, pp 277-288.
- Khush GS (1997) Origin, dispersal, cultivation and variation of rice. *Plant Mol Biol* 35:25-34.
- McCouch SR, Teytelman L, Xu Y, Lobos KB, Clare K, Walton M, Fu B, Maghirang R, Li Z, Xing Y, Zhang Q, Kono I, Yano M, Fjellstrom R, DeClerk G, Schneider D, Cartinhour S, Ware D and Stein L (2002) Development and mapping of 2240 new SSR markers for rice (*Oryza sativa* L.). *DNA Research* 9:199-207.
- McCouch SR (2005) Diversifying selection in plant breeding. *Plos Biol* 2:1507-1512.
- Ni J, Colowit PM and Mackill DJ (2002) Evaluation of genetic diversity in rice subspecies using microsatellite markers. *Crop Sci* 42:601-607.
- Oka HI (1991) Genetic diversity of wild and cultivated rice. In: Khush GS and Toenniessen GH (eds) *Rice Biotechnology*. IRRI, Los Baños, pp 55-81.
- Olufowote J, Xu YX, Chen X, Park WD, Beachell HM, Dilday RH, Goto M and McCouch SR (1997) Comparative evaluation of within-cultivar variation of rice (*Oryza sativa* L.) using microsatellite and RFLPs markers. *Genome* 40:370-378.
- Panaud O, Chen X and McCouch SR (1996) Development of microsatellite markers and characterization of simple se-



- quence length polymorphism (SSLP) in rice (*Oryza sativa* L.). *Genome* 252:597-607.
- Pereira JA (2002) Cultura do Arroz no Brasil – Subsídios para a sua História. Embrapa, Teresina, 226 pp.
- Presciuttini S, Toni C, Tempestini E, Verdiani S, Casarino L, Spinetti I, De Stefano F, Domenici R and Bailey-Wilson JE (2002) Inferring relationships between pairs of individuals from locus heterozygosities. *BMC Genetics* 3:23.
- Rafalski JA, Vogel JM, Morgante M, Powell W, Andre C and Tingey SV (1996) Generating and using DNA markers in plants. In: Birren B and Lai E (eds) *Analysis of Non-Mammalian Genomes – A Practical Guide*. Academic Press, New York, pp 75-134.
- Rangel PH, Guimarães EP and Neves PCF (1996) Base genética das cultivares de arroz (*Oryza sativa* L.) irrigado do Brasil. *Pesq Agropec Bras* 31:349-357.
- Rolf FJ (1989) NTSYS-PC: Numerical Taxonomy and Multivariate Analysis System. Exeter Publisher, New York, 126 pp.
- Sefc KM, Steinkellner H, Wagner HW, Glössl J and Regner F (1997) Application of microsatellite markers to parentage studies in grapevine. *Vitis* 36:179-183.
- Temnykh S, Park WD, Ayres N, Cartinhour S, Hauck N, Lipovich L, Cho YG, Ishii T and McCouch SR (2000) Mapping and genome organization of microsatellite sequences in rice (*Oryza sativa* L.). *Theor Appl Genet* 100:697-712.
- Veteläinen M, Nissilä E, Tigerstedt PMA and Bothmer R (1997) Utilization of exotic germplasm in Nordic barley breeding and its consequences for adaptation. In: Tigerstedt PMA (ed) *Adaptation in Plant Breeding*. Kluwer, New York, pp 289-295.
- Virk PS, Ford-Lloyd BV, Jackson MT, Pooni HS, Clemeno TP and Newbury HJ (1996) Predicting quantitative variation within rice germplasm using molecular markers. *Heredity* 76:296-304.
- Xu Y, Beachell H and McCouch SR (2004) A marker-based approach to broadening the genetic base of rice in the USA. *Crop Sci* 44:1947-1959.
- Yu SB, Xu WJ, Vijayakumar CHM, Ali J, Fu BY, Xu JL, Jiang YZ, Marghirang R, Domingo J, Aquino C, Virmani SS and Li ZK (2003) Molecular diversity and multilocus organization of the parental lines used in the International Rice Molecular Breeding Program. *Theor Appl Genet* 108:131-140.
- Weir BS (1990) *Genetic Data analysis*. Sinauer Associates, Sunderland, 230 pp.
- Wright S (1978) *Evolution and the genetics of populations. v. 4. Variability Within and Among Natural Populations*. University of Chicago Press, Chicago, 360 pp.

### Internet Resources

- Lewis PO and Zaykin D (2000) *Genetic Data Analysis: Computer Program for the Analysis of Allelic Data*. Version 1.0 (d15) Available from <http://alleyn.eeb.uconn.edu/gda/2000>.  
Associate Editor: Everaldo Gonçalves de Barros