

A GEOMETRICAL APPROACH FOR FUZZY DEA FRONTIERS

Luiz Biondi Neto

Electronics and Telecommunications Department – State University of Rio de Janeiro
Rua São Francisco Xavier 524, Bl. E, Sala 5006, 20550-900, Rio de Janeiro, RJ, Brazil
luiz.biondi@pq.cnpq.br

João Carlos C. B. Soares de Mello

Production Engineering Department – Fluminense Federal University
Rua Passo da Pátria 156, 24210-240, Niterói, RJ, Brazil
jcsmello@pq.cnpq.br

Lidia Angulo Meza

Production Engineering Department – Fluminense Federal University
Av. dos Trabalhadores 420, 27255-125, Volta Redonda, RJ, Brazil
lidia_a_meza@pq.cnpq.br

Eliane Gonçalves Gomes

Brazilian Agricultural Research Corporation (Embrapa)
Parque Estação Biológica, Av. W3 Norte final, 70770-901, Brasília, DF, Brazil
eliane.gomes@pq.cnpq.br

Abstract

Interval DEA frontiers are here used in situations where one input or output is subject to uncertainty in its measurement and is presented as an interval data. We built an efficient frontier without any assumption about the probability distribution function of the imprecise variable. We take into account only the minimum and the maximum values of each imprecise variable. Two frontiers are constructed: the optimistic and the pessimistic ones. We use fuzzy relationships to introduce a new efficiency index based on a set of some Fuzzy T Norms. We will explore only the case where only one single variable presents a certain degree of uncertainty.

Key words: Data envelopment analysis, Fuzzy sets, Interval data.

Resumo

Fronteiras DEA com dados intervalares são usadas em situações nas quais um *input* ou um *output* tem incerteza na medição e é apresentado como um dado intervalar. Neste artigo propõe-se a construção de uma fronteira eficiente sem assumir hipóteses sobre a função de distribuição de probabilidades da variável imprecisa. Aqui são apenas considerados os valores máximo e mínimo de cada variável imprecisa. São construídas duas fronteiras: uma otimista e outra pessimista. São usadas relações fuzzy para a proposição de um índice de eficiência baseado em Normas T Fuzzy. É discutido o caso em que apenas uma variável apresenta certo grau de incerteza em sua medida.

Palavras-chave: Análise envoltória de dados; Conjuntos difusos; Dados intervalares.

1. INTRODUCTION

Classic Data Envelopment Analysis (DEA) models (Cooper et al., 2000) estimate a non-parametric linear piecewise frontier determined by efficient Decision-Making Units (DMUs). Such models assume that the values involved are known with absolute precision. However, such hypothesis might not be true either due to uncertainty hidden in the measurements or because the data are given in interval format (Cooper et al., 2000). In the first case, the classical solution is to use the Stochastic Frontier Analysis (Coelli et al., 1998), which assumes that uncertainties follow some probability distribution. An introduction to such an approach with the use of parametric and econometric methods is found in Lovell (1993).

This paper proposes a method to evaluate efficiency in the case where the data are in interval form. The method uses a geometrical approach in order to build a fuzzy efficient frontier sets. Instead of calculating an efficiency score we will attribute to each and every DMU a membership degree to the frontier which will become a fuzzy set (Zadeh, 1965).

Alternative solutions for interval data in DEA models can be found in the literature with Fuzzy Linear Programming Problems. Yet another approach found is to present the efficiency measurements in terms of fuzzy functions. We emphasize that the approach followed in this paper uses only the concept of fuzzy sets and T Norms. The scores obtained herebelow are based mainly on geometrical considerations.

2. LITERATURE REVIEW IN DEA MODELS WITH UNCERTAINTIES

A comprehensive literature review on methods used to deal with imprecise DEA data can be found in Zhu (2003), who classifies data uncertainties into three types: interval data, ordinal data and interval data ratios. The author run a model called Imprecise Data Envelopment Analysis (IDEA) (Cooper et al., 1999), which treats the three types of data uncertainties using scale transformations. Due to the problems regarding scale transformations, the author proposes a simplified approach that converts the variables employed into exact data.

The IDEA model was used by Despotis and Smirlis (2002) to deal with uncertain data of two types: interval data and ordinal data. The use of such a linear model is carried out through a change of variable scales, turning the non-linear model into a linear programming model. As a result, upper and lower bounds are obtained for the efficiency of each DMU. According to the authors, the use of post DEA models allows a better discrimination among DMUs. The authors still proposed a post DEA model in order to determine target inputs for inefficient DMUs.

Cooper et al. (2001) proposed an extended IDEA model, which enables not only the use of imprecise data, but also the use of weight restrictions in the form of assurance regions or cone-ratios. In that case, the variable limits are changed to data adjustments. Such a model was applied to the efficiency evaluation of a Korean mobile telecommunication company.

Lertworasirikul et al. (2003) considered uncertain inputs and outputs as fuzzy sets. Efficiency computations are then carried out by means of linear fuzzy programming. As an alternative approach, the same authors proposed the use of possibility DEA models. A fuzzy variable is associated to a possibility distribution (Zadeh, 1978), where the fuzzy-DEA scores, although not unique, depend on the level of possibility used.

Entani et al. (2002) employed a DEA model to assess DMUs optimistically. These results were used to determine interval efficiencies by means of new DEA models. Consequently, the efficiency score is not represented by a number, but by an interval. On the other hand, Yamada et al. (1994) assessed each DMU pessimistically based on the Inverted DEA model and calculated interval efficiency scores. The authors still considered interval data and proposed a model to evaluate interval efficiency and inefficiency as carried out using crisp data.

Lopes and Lanzer (2002) carried out a performance evaluation of University academic departments. The DEA results on teaching, research and quality are set as fuzzy numbers. A unique performance score for each department was built using a weighted ordered aggregator.

Guo and Tanaka (2001) extended the DEA CCR model with fuzzy inputs and outputs to a model named DEARA. This model uses regression analysis concepts and a Fuzzy-DEA model, in which the resulting efficiency scores are interval fuzzy evaluations.

Kao and Liu (2000) proposed a method to measure DMUs efficiencies with fuzzy variables. The fuzzy model then turns out to a family of conventional DEA models based on crisp data using the α -cut approach. According to the authors, the fuzzy efficiency scores obtained are given by interval functions yielding more information to the decision-maker. This approach uses Fuzzy Linear Programming. A similar approach has been used by Lin (2006).

To measure the technical efficiency of DMUs, Triantis and Eeckaut (2000) relaxed the concept of production frontier and proposed a pair-wise comparison, checking the dominance or non-dominance of each DMU when compared to any other. The use of fuzzy variables to take into account imprecise data yields a fuzzy pair-wise comparison. Such results are represented in matrix form that shows two-way dominance. In other words, efficiency scores are not actually obtained, but only an indication of domination among DMUs. It should be stressed that should this model be used with crisp data, it would generate a model equivalent to the Free Disposal Hull (FDH) model (Deprins et al., 1984).

Hougaard (1999) used fuzzy intervals to combine the information given by DEA analytical efficiency scores with subjective efficiency scores. Qualitative and organizational aspects are in fuzzy intervals format. The relationship between this information is given by a fuzzy interval function. Ideally, the two sources of information related to the performance of a DMU can be joined in such a way that the objective DEA aspect is used to control the subjectivity in the expert point of view, and vice-versa. That leads to a modified score set in terms of a fuzzy interval.

Triantis and Girod (1998) suggested a three-stage approach to measure technical efficiency in a fuzzy environment. This approach uses classic DEA techniques and is built on fuzzy parametric programming concepts (Carlsson e Korhonen, 1986).

Sengupta (1992) used fuzzy sets theory in a DEA context. The author uses three types of fuzzy statistics (fuzzy mathematical programming, fuzzy regression and fuzzy entropy) to illustrate the types of decision and solution that can be reached when we have imprecise data and a priori information is uncertain and imprecise. The same author (Sengupta, 2005) generalized the nonparametric approach of DEA in both static and dynamic directions by incorporating uncertainties. He addressed an extension of the convex hull method of DEA for determining a production frontier in the presence of demand and supply uncertainty of outputs and inputs.

An approach based on randomized ranks is presented by Sant'Anna (2002).

When applications are concerned, we may cite a study on the location for the geographic situation of hydroelectric plants (Sant'Anna e Sant'Anna, 2008) and the study on the efficiency of Taiwan hotels (Shen e Hsieh, 2006).

3. FUZZY EFFICIENT FRONTIER

The approach developed here makes no assumption regarding the way each input or output varies. Only maximum and minimum values for each output and each input are required. Only geometric relationships are required to obtain the membership degree of each DMU to the fuzzy frontier. The algebraic calculation of those relations uses only classic DEA models. If the variables are in interval form, the exact location of the efficient frontier is unknown. It may be placed between upper and lower bounds. That is, the frontier is not a piecewise linear surface but a region of the space. In the case of one single input and one single output, such a frontier would be a strip. In other words, this frontier is a fuzzy set (Zadeh, 1965). To such sets, instead of stating that a single element belongs or not to the set, we consider that all elements belong to it with a certain degree of membership.

In the absence of objective reasons to choose among one of the various classical membership functions we will use some geometric measurements on the fuzzy efficient frontier. To do so, we need to introduce some concepts:

- Upper frontier: It is the frontier obtained by a classic DEA model (CCR or BCC) that considers the maximum value of the imprecise output for each DMU. As in terms of production this is the most desirable situation for all DMUs, the frontier so obtained may also be named Optimistic Frontier.

- Lower frontier: It is the frontier obtained by a classic DEA model (CCR or BCC) that considers the minimum value of the imprecise output for each DMU. Since in terms of production this is the least favorable situation for all DMUs, the frontier so obtained may also be named Pessimistic Frontier.

The definitions hereabove are concerning to the case when the variable in interval form is an output. Moreover, these concepts are similar to those defined by Kao and Liu (2000). Those authors have used Fuzzy Linear Programming, and we will use a geometrical approach. The relations derived from our geometrical approach are a generalization of the relation obtained by Soares de Mello et al (2005) and used by Gomes et al. (2006) and by Correia and Soares de Mello (2008).

Figure 1 illustrates these concepts, considering the BCC DEA model (Banker et al., 1984). The interval data DEA frontier comprises the region between the lower and the upper frontiers. In opposition to classic DEA frontier, a DMU cannot be represented as a point in a multidimensional space. Its geometric representation must be a line segment (even in multidimensional cases). In Figure 1, the DMU under analysis is represented by the segment $\overline{PIP2}$. The point $P2$ corresponds to the lower value of the imprecise output and the point $P1$ corresponds to the upper values of the imprecise output.

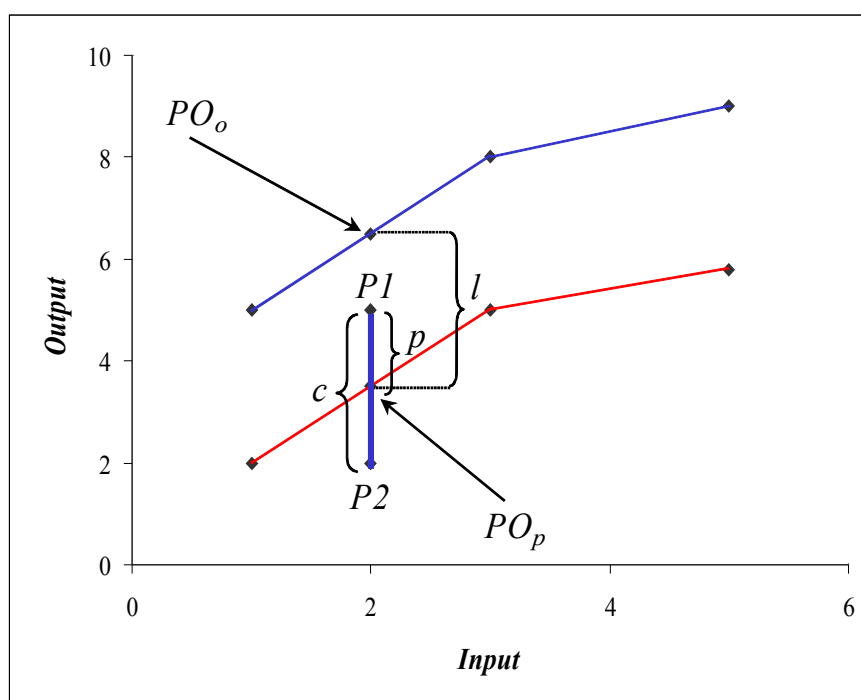


Figure 1: Optimistic and pessimistic frontiers.

Also in Figure 1, PO_o and PO_p are the projected output on the optimistic and pessimistic frontiers; c is the DMU length, i.e., the difference between the optimistic and pessimistic values of the output; l is the width of the strip connecting the DMU projections on both frontiers; p is the

difference between the optimistic output of each DMU and its projection on the pessimistic frontier.

To determine the DMU's membership degrees to the frontier we consider the following cases.

- 1) Figure 2 shows that DMUs A and F are totally inside the region defining the fuzzy frontier. Such DMUs must have a unitary membership degree the fuzzy frontier.
- 2) DMUs B and C slightly touch the frontier and so their membership degrees are zero.
- 3) Between those extreme situations, DMUs E and G would have intermediate membership degrees.
 - a) The segment that represents DMU G covers all the length of the fuzzy frontier. However, its membership degree cannot be one, as it still has a strip outside the fuzzy frontier. This means that although this DMU totally includes the frontier, it is not totally included there. The ratio p/c is adequate to evaluate the membership degree in situations similar to that of DMU G.
 - b) An inverse situation is presented by DMU E, which is fully contained in the fuzzy frontier, but does not entirely cover it. Like DMU G, this DMU cannot present a unitary membership degree to the frontier. For such situation the ratio p/l adequately represents the membership degree.

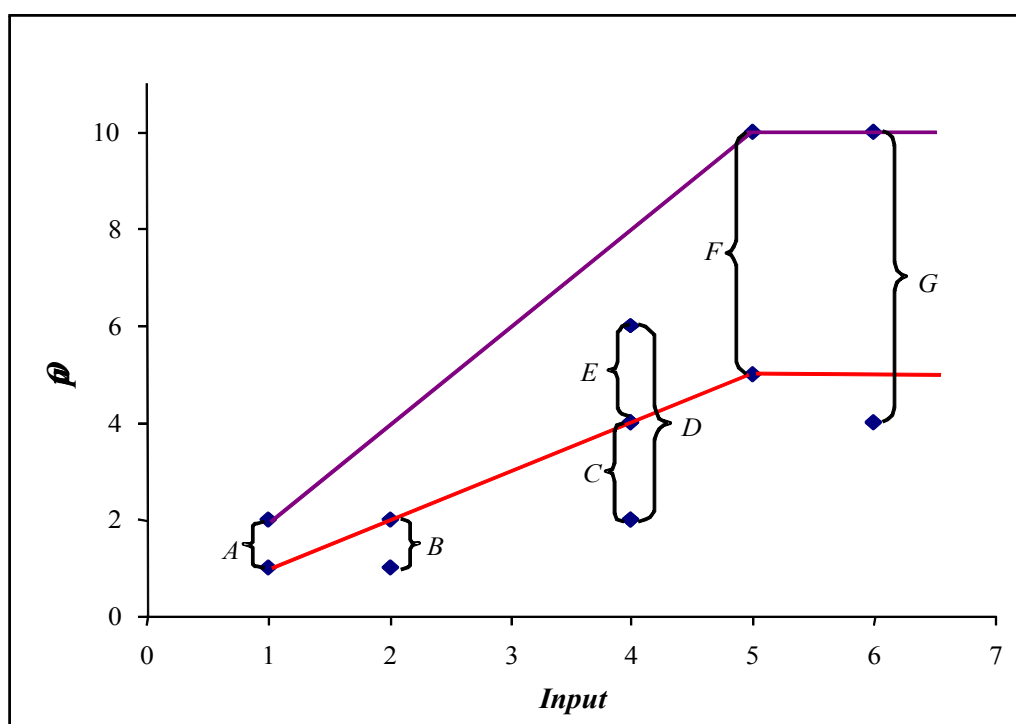


Figure 2: Interval data DEA frontier in a BCC model.

Both ratios above are only adequate in particular situations and lead to meaningless results when used in a different situation. In order to obtain a membership function with properties required in items 1), 2) and 3) (a and b), we need to combine the two ratios.

Properties 1), 2) and 3) are satisfied if we defined a T Norm between the fuzzy set defined by the membership function p/l and the fuzzy set defined by the membership function p/c .

We will use three 'T Norm' to evaluate the membership degree of a DMU to the Fuzzy Frontier: (i) The Product; (ii) the Drastic Product; (iii) the Min. The graphic representation of these three T Norms can be seen in Figure 3.

(i) Expression (1): φ_P is the membership degree using the Product.

$$\varphi_P = \frac{p^2}{lc} \quad (1)$$

(ii) Expression (2): φ_D is the membership degree using the Drastic Product.

$$\varphi_D = \begin{cases} 0, & \text{if } p < c \text{ and } p < l \\ p/c, & \text{if } p = l \\ p/l, & \text{if } p = c \end{cases} \quad (2)$$

(iii) Expression (3): φ_M is the membership degree using the Min.

$$\varphi_M = \text{Min}(p/c, p/l) \quad (3)$$

These expressions may be used only if the uncertainty of the output is not null, to avoid divisions by zero. In other words, expressions (1), (2) and (3) are not valid if a DMU has no uncertainty in its output.

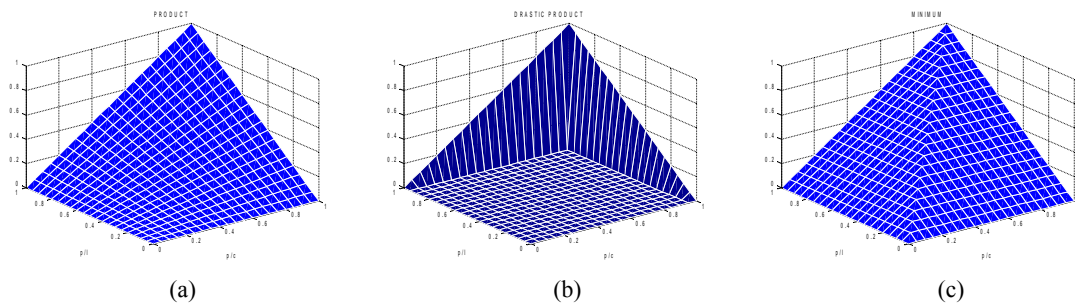


Figure 3: Representations of the T Norms: (a) the Product; (b) the Drastic Product; (c) the Min.

Table 1 shows the results of membership degrees calculations for the DMUs of Figure 2, where O_p and O_o are the output values for the pessimistic and optimistic frontiers, respectively, and I is the input value.

Table 1: Membership degrees regarding the fuzzy DEA frontier.

DMU	I	O_p	O_o	c	l	p	φ_P	φ_D	φ_M
A	1	1	2	1	1	1	1,00	1,00	1,00
B	2	1	2	1	2	0	0,00	0,00	0,00
C	4	2	4	2	4	0	0,00	0,00	0,00
D	4	2	6	4	4	2	0,25	0,00	0,50
E	4	4	6	2	4	2	0,50	0,50	0,50
F	5	5	10	5	5	5	1,00	1,00	1,00
G	6	4	10	6	5	5	0,83	0,83	0,83

From the algebraic properties of the T Norms follows that $\varphi_D \leq \varphi_P \leq \varphi_M$.

If we want to choose only one of these norms, we should prefer the T Norm “Product”. The reason for this choice is that the φ_P value is neither the largest, nor the smallest value of the membership degree. That is, it is not too much benevolent, or too much aggressive.

4. ALGEBRAIC CALCULATION OF THE MEMBERSHIP DEGREE

The previous calculations are based on a geometrical definition, which is feasible only for very simple models. In order to obtain an expression that might be used for multidimensional general models, in which only one output is imprecise, it is essential to change the geometric terms in equation (1), (2) and (3) into variables that might be derived from the classic DEA models.

For the case of one imprecise output, considering the classic DEA definitions for output oriented models, and also remembering that for that case the efficiencies are greater than one (BCC DEA model), equations (4) and (5) can be rewritten for O_p and O_o , that are the output values for the pessimistic and optimistic frontiers, where

- PO_p and PO_o are the output targets on the pessimistic and optimistic frontiers, i.e., the projected output on the optimistic and pessimistic frontiers;
- Eff_p is the efficiency calculated using the lower output values, i.e., the efficiency related to the pessimistic frontier;
- Eff_o is the efficiency calculated using the upper output values, i.e., the efficiency related to the optimistic frontier.

$$Eff_p = \frac{PO_p}{O_p} \quad (4)$$

$$Eff_o = \frac{PO_o}{O_o} \quad (5)$$

With the purpose of avoiding misunderstandings, Eff_o and Eff_p should not be named optimistic and pessimistic efficiencies, as there is no guarantee that $Eff_o \geq Eff_p$.

From the geometrical representation we easily obtain $l = PO_o - PO_p = O_o Eff_o - O_p Eff_p$ and $c = O_o - O_p$. In a situation where the DMU is partially contained by the fuzzy frontier, p is the difference between the optimistic output and the output target on the pessimistic frontier, which is a positive number. If the DMU is totally outside the fuzzy frontier (except by a possible single point), the difference above is negative or zero. In this situation the membership degree must be zero, and p must also equal zero to obtain this result. Expression (6) formalizes the equation for p .

$$p = \begin{cases} O_o - O_p Eff_p, & \text{if } O_o - O_p Eff_p \geq 0 \\ 0, & \text{otherwise} \end{cases} \quad (6)$$

From the previous relationships, it is possible to derive the expression that represents algebraically the membership degree φ_p , φ_D and φ_M which are shown in (7), (8) and (9), respectively.

$$\varphi_p = \begin{cases} \frac{(O_o - O_p Eff_p)^2}{(O_o Eff_o - O_p Eff_p)(O_o - O_p)}, & \text{if } O_o - O_p Eff_p \geq 0 \\ 0, & \text{otherwise} \end{cases} \quad (7)$$

$$\varphi_D = \begin{cases} 0, & \text{if } \left((Eff_p > 1 \text{ and } Eff_o > 1) \text{ or } (O_o - O_p Eff_p < 0) \right) \\ \frac{O_o - O_p Eff_p}{O_o - O_p}, & \text{if } Eff_o = 1 \\ \frac{O_o - O_p Eff_p}{O_o Eff_o - O_p Eff_p}, & \text{if } Eff_p = 1 \end{cases} \quad (8)$$

$$\varphi_M = \begin{cases} \text{Min} \left(\frac{O_o - O_p Eff_p}{O_o - O_p}, \frac{O_o - O_p Eff}{O_o Eff_o - O_p Eff_{p_o}} \right), & \text{if } O_o - O_p Eff_p \geq 0 \\ 0, & \text{otherwise} \end{cases} \quad (9)$$

Table 2 details the algebraic calculation of φ_P, φ_D and φ_M . It should be noticed that, due to the output orientation model, the inefficient DMUs produce an efficient score greater than one.

Table 2: Computed values based on expressions (4) to (9).

DMU	I	O_p	O_o	Eff_p	Eff_o	c	l	p	φ_P	φ_D	φ_M
A	1	1	2	1,00	1,00	1	1	1	1,00	1,00	1,00
B	2	1	2	2,00	2,00	1	2	0	0,00	0,00	0,00
C	4	2	4	2,00	2,00	2	4	0	0,00	0,00	0,00
D	4	2	6	2,00	1,33	4	4	2	0,25	0,00	0,50
E	4	4	6	1,00	1,33	2	4	2	0,50	0,50	0,50
F	5	5	10	1,00	1,00	5	5	5	1,00	1,00	1,00
G	6	4	10	1,25	1,00	6	5	5	0,83	0,83	0,83

5. FUZZY FRONTIER WITH ONE IMPRECISE INPUT

The case of one imprecise input may be analyzed in a way similar to that of one imprecise output. In that case, the optimistic input, I_o , is the smallest value of the input, and the pessimistic input, I_p is the largest one. An optimistic frontier is obtained when optimistic inputs are considered for all DMUs and, conversely, a pessimistic frontier is characterized when pessimistic inputs are assumed for all DMUs.

Figure 4 depicts the optimistic and the pessimistic frontiers for the case of one imprecise input. In this figure I_o, I_p, PI_o and PI_p represent, respectively, the optimistic and pessimistic values of the imprecise input, and the input target values on the optimistic and pessimistic frontiers. Conversely for the output-oriented situation, now the line segment representing the DMU with imprecise input value lies in the horizontal position.

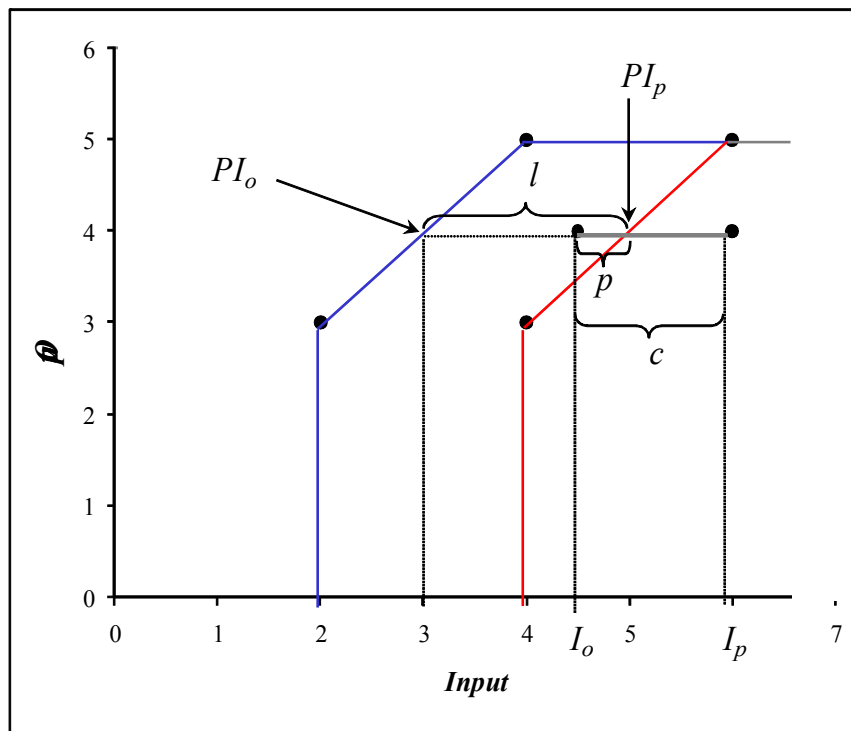


Figure 4: Optimistic and pessimistic frontiers for the input oriented BCC model.

In a similar way to the imprecise output membership degree, we show following the membership degree based on the T Norms for the imprecise input case. Expressions (10), (11) and (12) present the membership degrees for the situations φ_P, φ_D and φ_M .

$$\varphi_P = \begin{cases} \frac{(I_p \text{Eff}_p - I_o)^2}{(I_p \text{Eff}_p - I_o \text{Eff}_o)(I_p - I_o)}, & \text{if } I_p \text{Eff}_p - I_o \geq 0 \\ 0, & \text{otherwise} \end{cases} \quad (10)$$

$$\varphi_D = \begin{cases} 0, & \text{if } ((\text{Eff}_p < 1 \text{ and } \text{Eff}_o < 1) \text{ or } (I_p \text{Eff}_p - I_o < 0)) \\ \frac{I_p \text{Eff}_p - I_o}{I_p - I_o}, & \text{if } \text{Eff}_o = 1 \\ \frac{I_p \text{Eff}_p - I_o}{I_p \text{Eff}_p - I_o \text{Eff}_o}, & \text{if } \text{Eff}_p = 1 \end{cases} \quad (11)$$

$$\varphi_M = \begin{cases} \text{Min} \left(\frac{I_p \text{Eff}_p - I_o}{I_p - I}, \frac{I_p \text{Eff}_p - I_o}{I_p \text{Eff}_p - I_o \text{Eff}_o} \right), & \text{if } I_p \text{Eff}_p - I_o \geq 0 \\ 0, & \text{otherwise} \end{cases} \quad (12)$$

6. CONCLUSION

The approach proposed in this paper, in order to incorporate uncertainties in classic DEA models, has the advantage of neither using any particular probability distribution for the variable uncertainties, nor a fuzzy function for them. Besides, it is at the same time mathematically simple, since the results are obtained by simple algebraic calculations (after calculating DEA classic frontiers), in opposition to the change of variable used in Despotis and Smirlis (2002), and without the need of using Inference Fuzzy System.

The location of the interval DEA frontier allows the geometrically building of a membership function and, consequently, obtaining a fuzzy result that uses the membership concept without the need of using the classical membership functions. As a matter of fact, the geometrical considerations used to define the membership index implicitly employed uniform membership functions. Those functions have constant values. One of them is equal to the inverse of the length of the DMU representative segment. The other one has his value inverse to the length of the segment determined by the pessimistic and optimistic targets. A generalization of this approach would consist on admitting other forms of membership functions, like triangular membership functions, and replace the length of segments by integrals of the membership functions along these segments.

7. REFERENCES

- Banker, R. D., Charnes, A., e Cooper, W. W. 1984. Some models for estimating technical scale inefficiencies in data envelopment analysis. *Management Science* 30 (9):1078-1092.
- Carlsson, C., e Korhonen, P. 1986. A parametric approach to fuzzy linear programming. *Fuzzy Sets and Systems* 20:17-33.
- Coelli, T., Rao D.S.P., e Battese, G. E. 1998. *An introduction to efficiency and productivity analysis*: Kluwer Academic Publishers.
- Cooper, W. W., Park, K. S., e Yu, G. 1999. Idea and ar-idea: Models for dealing with imprecise data in dea. *Management Science* 45:597-607.
- Cooper, W. W., Park, K. S., e Yu, G. 2001. An illustrative application of idea (imprecise data envelopment analysis) to a korean mobile telecommunication company. *Operations Research* 49 (6):807-820
- Nov-Dec %! An illustrative application of idea (imprecise Data Envelopment Analysis) to a Korean mobile telecommunication company %@ 0030-0364X %M ISI:000173385900001.
- Cooper, W. W., Seiford, L., e Tone, K. 2000. *Data envelopment analysis: A comprehensive text with models, applications, references and dea-solver software*. Boston: Kluwer.
- Correia, T. C. V. D., e Soares de Mello, J. C. C. B. 2008. Avaliação da eficiência das companhias aéreas brasileiras com modelo dea nebuloso. In *XII Congresso de Pesquisa e Ensino em Transportes - ANPET. Panorama Nacional da Pesquisa em Transportes 2008*. Fortaleza: ANPET, 975-985.
- Deprins, D., Simar, L., e Tulkens, H. 1984. Measuring labor inefficiency in post offices. In *The performance of public enterprises: Concepts and measurements*, edited by Marchand, M., Pestieau, P. e Tulkens, H. Amsterdam: North-Holland, 243-267.
- Despotis, D. K., e Smirlis, Y. G. 2002. Data envelopment analysis with imprecise data. *European Journal of Operational Research* 140:24-36.
- Entani, T., Maeda, Y., e Tanaka, H. 2002. Dual models of interval dea and its extensions to interval data. *European Journal of Operational Research* 136:32-45.
- Gomes, E. G., Soares de Mello, J. C. C. B., e Mangabeira, J. A. d. C. 2006. Fronteira dea difusa na avaliação de eficiência em agricultura. *Investigação Operacional* 26 (1):65-88.
- Guo, P., e Tanaka, H. 2001. Fuzzy dea: A perceptual evaluation method. *Fuzzy Sets and Systems* 119:149-160.

- Hougaard, J. L. 1999. Fuzzy scores of technical efficiency. *European Journal of Operational Research* 115:529-541.
- Kao, C., e Liu, S. T. 2000. Fuzzy efficiency measures in data envelopment analysis. *Fuzzy Sets and Systems* 113 (3):427-437.
- Lertworasirikul, S., Fang, S. C., Joines, J. A., e Nuttle, H. L. W. 2003. Fuzzy data envelopment analysis (dea): A possibility approach. *Fuzzy Sets and Systems* 139 (2):379-394.
- Lin, P. H. 2006. Multiple criteria ranking by fuzzy data envelopment analysis. *WSEAS Transactions on Computers* 5 (5):810-816.
- Lopes, A. L. M., e Lanzer, E. A. 2002. Data envelopment analysis – dea and fuzzy sets to assess the performance of academic departments: A case study at federal university of santa catarina – ufsc. *Pesquisa Operacional* 22 (2):217-230.
- Lovell, C. A. K. 1993. Production frontiers and production efficiency. In *The measurement of productive efficiency: Techniques and applications*, edited by Fried, H. O., Lovell, C. A. K. e Schmidt, S. S. New York: Oxford University Press, 3-67.
- Sant'Anna, L. A. F. P., e Sant'Anna, A. P. 2008. A probabilistic approach to evaluate the exploitation of the geographic situation of hydroelectric plants. *Energy Policy* 36 (7):2320-2329.
- Sant'anna, A. P. 2002. Data envelopment analysis of randomized ranks. *Pesquisa Operacional* 22 (2):203-215.
- Sengupta, J. K. 1992. A fuzzy systems approach in data envelopment analysis. *Computers & Mathematics with Applications* 24:8-9.
- Sengupta, J. K. 2005. Nonparametric efficiency analysis under uncertainty using data envelopment analysis. *International Journal of Production Economics* 95:39-49.
- Shen, C. C., e Hsieh, K. L. 2006. Incorporating fuzzy theory and dea into performance evaluation: The case of taiwan's international hotels. *WSEAS Transactions on Systems* 5:2666-2671.
- Soares de Mello, J. C. C. B., Gomes, E. G., Angulo-Meza, L., Biondi Neto, L., e Sant'anna, A. P. 2005. Fronteiras dea difusas. *Investigação Operacional* 25 (1):85-103.
- Triantis, K., e Eeckaut, P. V. 2000. Fuzzy pair-wise dominance and implications for technical efficiency performance assessment. *Journal of Productivity Analysis* 13:207-230.
- Triantis, K., e Girod, O. 1998. A mathematical programming approach for measuring technical efficiency in a fuzzy environment. *Journal of Productivity Analysis* 10 (1):85-102.
- Yamada, Y., Matui, T., e Sugiyama, M. 1994. New analysis of efficiency based on dea. *Journal of the Operations Research Society of Japan* 37:158-167.
- Zadeh, L. 1965. Fuzzy sets. *Information and Control* 8 (3):338-353.
- Zadeh, L. 1978. Fuzzy sets as a basis for a theory of possibility. *Fuzzy Sets and Systems* 1:3-28.
- Zhu, J. 2003. Imprecise data envelopment analysis (idea): A review and improvement with an application. *European Journal of Operational Research* 144:513-529.