

RESEARCH ARTICLE

# Clathrin-dependent endocytosis is associated with RNAi response in the western corn rootworm, *Diabrotica virgifera virgifera* LeConte

Daniele H. Pinheiro<sup>1,2</sup>, Ana M. Vélez<sup>3\*</sup>, Elane Fishilevich<sup>3,4</sup>, Haichuan Wang<sup>3</sup>, Newton P. Carneiro<sup>3,5</sup>, Arnubio Valencia-Jiménez<sup>6</sup>, Fernando H. Valicente<sup>5</sup>, Kenneth E. Narva<sup>4</sup>, Blair D. Siegfried<sup>1</sup>

**1** Entomology and Nematology Department, Charles Steinmetz Hall, University of Florida, Gainesville, Florida, United States of America, **2** Department of Chemistry, Federal University of Lavras, Lavras, Minas Gerais, Brazil, **3** Department of Entomology, Entomology Hall, University of Lincoln, Lincoln, Nebraska, United States of America, **4** Corteva Agriscience™, Agriculture Division of DowDuPont™, Indianapolis, Indiana, United States of America, **5** Nucleus of Applied Biology, Embrapa Maize and Sorghum, Sete Lagoas, Minas Gerais, Brazil, **6** Departamento de Producción Agropecuaria, Universidad de Caldas, Manizales, Caldas, Colombia

\* [avelezarango2@unl.edu](mailto:avelezarango2@unl.edu)



**OPEN ACCESS**

**Citation:** Pinheiro DH, Vélez AM, Fishilevich E, Wang H, Carneiro NP, Valencia-Jiménez A, et al. (2018) Clathrin-dependent endocytosis is associated with RNAi response in the western corn rootworm, *Diabrotica virgifera virgifera* LeConte. PLoS ONE 13(8): e0201849. <https://doi.org/10.1371/journal.pone.0201849>

**Editor:** Juan Luis Jurat-Fuentes, University of Tennessee, UNITED STATES

**Received:** April 9, 2018

**Accepted:** July 22, 2018

**Published:** August 9, 2018

**Copyright:** ©2018 Pinheiro et al. This is an open access article distributed under the terms of the [Creative Commons Attribution License](https://creativecommons.org/licenses/by/4.0/), which permits unrestricted use, distribution, and reproduction in any medium, provided the original author and source are credited.

**Data Availability Statement:** All relevant data are within the paper and its Supporting Information files.

**Funding:** This work was partially supported by CNPq-Conselho Nacional de Desenvolvimento Científico e Tecnológico for DHP's scholarship (DHP). AMV, HW, AVJ and BDS were funded by the University of Nebraska-Lincoln. Corteva Agriscience™, Agriculture Division of DowDuPont™ provided support in the form of

## Abstract

The cellular uptake of dsRNA after dietary exposure is critical for RNAi efficiency; however, the mechanism of its uptake in many insects remains to be understood. In this study, we evaluated the roles of the endocytic pathway genes *Clathrin heavy chain (Chc)*, *Clathrin adaptor protein AP50*, *ADP ribosylation factor-like 1 (Arf72A)*, *Vacuolar H<sup>+</sup> ATPase 16 kDa subunit (Vha16)*, and *small GTPase Rab7* and putative *sid-1*-like genes (*silA* and *silC*) in RNAi response in western corn rootworm (WCR) using a two-stage dsRNA exposure bioassay. Silencing of *Chc*, *Vha16*, and *AP50* led to a significant decrease in the effects of *laccase2* dsRNA reporter, indicating that these genes are involved in RNAi response. However, the knockdown of either *Arf72A* or *Rab7* did not suppress the response to *laccase2* dsRNA. The silencing of the *silC* gene did not lead to a significant reduction in mortality or increase in the expression of *V-ATPase A* reporter. While the silencing of the *silA* gene significantly decreased insect mortality, significant changes in *V-ATPase A* expression were not detected. These results suggest that clathrin-dependent endocytosis is a biological mechanism that plays an important role during RNAi response in WCR adults. The fact that no definitive support for the roles of *silA* or *silC* in RNAi response was obtained support the idea that RNAi response varies greatly in different insect species, demanding additional studies focused on elucidating their involvement in this mechanism.

## Introduction

Experiments conducted in several insect orders have shown that RNAi can be used as a potential tool for insect pest management by induction of an RNAi response after ingestion of

salaries for authors KEN and EF but did not have a role in the study design, data collection and analysis, decision to publish, or preparation of the manuscript. The specific roles of these authors are articulated in the 'author contributions' section.

**Competing interests:** KEN is an employee of Corteva Agriscience™, Agriculture Division of DowDuPont™. EF is a former employee of Corteva Agriscience™, Agriculture Division of DowDuPont™. This does not alter the authors' adherence to PLOS ONE policies on sharing data and materials. There are no disputes pertaining to the ownership of the data presented in the paper and all contributions are attributed below. All authors state that they adhere to the PLoS One Conflict of Interest Guidelines.

dsRNA [1–7]. The mechanism that allows uptake of the dsRNA from the gut lumen by midgut cells and the subsequent systemic spread from cell to cell is likely to have significant influence on the efficiency of RNAi. Considering that the level of RNAi response across insect orders is highly variable [8–10], a better understanding of this process could aid in the development and improvement of RNAi-based technologies for insect pest management.

The western corn rootworm (WCR), *Diabrotica virgifera virgifera* LeConte, is one of the most important insect pests of maize throughout the U.S. Corn Belt [11]. Control failures of WCR with synthetic insecticides, crop rotation, and transgenic plants expressing *Bacillus thuringiensis* toxins have become a serious problem and new management strategies are urgently needed [12–18]. To complement current management strategies, transgenic maize events based on RNAi for WCR control are likely to be deployed by the end of the decade [7].

WCR exhibits a robust systemic RNAi response induced by direct injection of dsRNA [19], feeding of dsRNA provided in artificial diet [20–22], or transgenic plants expressing dsRNA [2, 20]. Understanding the mechanism of dsRNA uptake and the spread of the RNAi signal will contribute not only to the improvement of RNAi efficiency for the management of WCR and other insect pests but will also generate valuable information about potential and some specific mechanisms of insect resistance to RNAi-based technologies.

The systemic RNA interference-defective-1 (SID-1) protein is perhaps the best studied factor required for dsRNA uptake and systemic RNAi [23, 24]. In *Caenorhabditis elegans*, the SID-1 multi-transmembrane domain protein is present in the cell membrane and functions as a channel for the passive transport of dsRNA between cells [23]. In addition to SID-1, other proteins are involved in dsRNA uptake in *C. elegans*, including SID-2, SID-3, and SID-5. SID-2 is responsible for the active import of environmental dsRNA from the intestinal lumen [25, 26], while SID-3 is a conserved tyrosine kinase that allows the entry of dsRNA into the cells [27]. In contrast, SID-5 is an endosome-associated protein, believed to be involved in the release of dsRNA from the endosome and movement of the RNAi signal from cell to cell [28, 29].

Homologous sequences of the *sid-1* gene have been identified in many species of different insect orders, except for Diptera [30]. In WCR, only two *sid-1*-like genes have been found and the phylogenetic analysis of the deduced proteins indicates that they are orthologous to the *Trichobolium silA* and *silC* genes [31]. An association between the presence of *sid-1*-like genes and the systemic spread of dsRNA was initially proposed since *sid-1*-like genes are absent in *Drosophila melanogaster* and other dipterans, species that do not display a robust systemic RNAi response. However, subsequent studies on other insect orders demonstrated that the presence of *sid-1*-like genes does not necessarily result in a robust systemic RNAi response. For example, the silkworm, *Bombyx mori*, harbors three *sid-1*-like genes, but it does not exhibit a substantial systemic RNAi response [30].

Endocytosis has been suggested as an alternative dsRNA uptake mechanism in *D. melanogaster* S2 cells [32, 33]. The silencing of the *Chc* gene, which plays a critical role in clathrin-dependent endocytosis, reduced the lethality of *D. melanogaster* S2 cells after exposure to *Ubiquitin (Ubi-p63E)* dsRNA, an essential gene for cell viability [33]. A functional screening of a dsRNA library from *D. melanogaster* S2 cells found several genes involved in the endocytic pathway [32], including *Clathrin heavy chain (Chc)*, *Clathrin adaptor protein AP50*, that is also known as the  $\mu$  subunit of the AP2 adapter complex (*AP-2 $\mu$ /AP50*) [34], *ADP ribosylation factor-like 1 (Arl1/Arf72A)* [35], *Vacuolar H<sup>+</sup> ATPase (V-ATPase)* 16 kDa (CG3161) and SFD (CG17332) subunits, and small GTPase *Rab7* to be necessary for cellular uptake of dsRNA [32]. The proteins encoded by these genes have been associated with various functions in the clathrin-dependent endocytosis. *Chc* is the major component of clathrin-coated pits formed on the inner surface of the cytoplasmic membrane [34]; AP50 acts linking the clathrin to its

cargo [34] and Arl1/Arf72A is involved in endosomal trafficking at trans-Golgi [36, 37], while Vacuolar H<sup>+</sup> ATPase (Vha16) and Rab7 play critical roles in endosome maturation by acidifying endosomes and promoting late endosome fusion, respectively [32, 38].

The requirement of the endocytic pathway for cell entry of dsRNA has also been suggested in other insects including the desert locust, *Schistocerca gregaria* [39], the oriental fruit fly, *Bactrocera dorsalis* [40], the red flour beetle, *Tribolium castaneum* [41], and Colorado potato beetle, *Leptinotarsa decemlineata* [42, 43]. The silencing of different genes directly related to clathrin-dependent endocytosis, including, *Chc*, *Arf72A*, *Rab7*, *AP50*, and *Vacuolar H<sup>+</sup> ATPase SFD subunit (VhaSFD)* was able to block significantly the RNAi response in *T. castaneum*, supporting the involvement of endocytosis in dsRNA uptake [41]. Similarly, the knockdown of *Chc* and *Vacuolar H<sup>+</sup> ATPase 16 kDa subunit (Vha16)* in *S. gregaria* also diminished the RNAi response in this insect [39].

While it is possible that both clathrin-dependent endocytosis and the SIL proteins are involved in the RNAi effect and the uptake/spread of the dsRNA in WCR, a direct comparison of their impact on RNAi response will help to identify key genes involved in these processes and the reasons for a potential diverse uptake/spread response during RNAi mechanism. By testing both endocytic genes and *sil* genes in *L. decemlineata* [42], it was established that endocytosis is the major contributor to successful RNAi in this insect. Since WCR is a major agricultural pest that is readily susceptible to RNAi and is a robust laboratory model, elucidating key pathways involved in its RNAi response can pave the way to understanding of environmental RNAi in other insects.

In the present study, we report that interruption of the endocytic pathway by silencing *AP50*, *Chc*, and *Vha16* genes decreased the suppression of the non-lethal reporter gene, *lacase2*, demonstrating that clathrin-dependent endocytosis is involved in RNAi response in WCR adults. In contrast, the knockdown of *sil* genes yielded mixed results. *silA* knockdown generated a reduced RNAi response in WCR adults exposed to dsRNA of the lethal reporter gene, *V-ATPase A*, that could not be supported at the transcript level. The knockdown of *silC* or both *sil* genes simultaneously did not affect the RNAi response. These results do not provide a strong evidence for the involvement of *sil* genes in the RNAi response in WCR, yet they do not rule it out.

## Material and methods

### Insects and diet

Newly emerged non-diapausing WCR adults were purchased from Crop Characteristics Inc. (Farmington, MN). The artificial diet used in all bioassays was modified from Branson and Jackson [44]. The diet consisted of 6 grams of the dry ingredients reported by Branson and Jackson [44], 12.5 ml of water, 0.365 g of agar, 0.7 ml of glycerol, and 27.5  $\mu$ l of a solution of 47% propionic acid and 6% phosphoric acid to reduce microbial contamination. The diet was dispensed into a Petri dish, allowed to solidify at room temperature, and diet plugs were cut using a cork borer (4 mm diameter). WCR adults were kept in a growth chamber at 23  $\pm$  1°C, 75  $\pm$  5% relative humidity with 16:8 photoperiod.

### Identification of endocytic pathway genes and putative *sid-1*-like in the WCR transcriptome

Nucleotide sequences encoding *Clathrin heavy chain (Chc)* (KJ135005.1) and *Vacuolar H<sup>+</sup> ATPase 16kDa subunit (Vha16)* (KJ135006.1) from *S. gregaria* were used as query sequences to search for putative homologs in the WCR transcriptome. Putative *sid-1*-like (*silA* and *silC*) and

clathrin-mediated endocytosis genes were identified by BLAST searching the WCR transcriptome database described by Eyun et al. [45], using the reported sequences from *S. gregaria* and *T. castaneum* [30, 39, 41]. The sequences encoding *Clathrin adaptor protein AP50 (AP50)* (KJ476827), *small GTPase Rab7 (Rab7)* (KJ476829), *ADP-ribosylation factor-like protein 1 (Arf72A)* (XM\_967932.3), *systemic RNA interference defective-1-related A (Sil-1A)* (NM\_001105542.1), and *systemic RNA interference defective-1-related C (Sil-1C)* (NM\_001105658.1) from *T. castaneum* were used as queries. The identified putative WCR orthologs [*Chc* (KX965603), *Vha16* (KX965604), *AP50* (KX965605), *Arf72A* (KX965607), *Rab7* (KX965606), *silA* (KX965608) and *silC* (KX965609)] were deposited in GenBank.

### Double stranded RNA (dsRNA) preparation

Total RNA was isolated from the whole body of a single WCR adult using GeneJET RNA Purification Kit (Fermentas-Thermo Scientific, Waltham, MA) following manufacturer's instructions. First-strand cDNA was generated with 500 ng of total RNA using the QuantiTect Reverse Transcription Kit (Qiagen, Valencia, CA). Gene-specific primers were designed with Primer3Plus software [46, 47] to amplify *silA*, *silC*, *Chc*, *Vha16*, *AP50*, *Arf72A*, *Rab7*, *laccase2*, and *GFP* gene. All primers included the T7 promoter sequence at the 5' end. The primers described by Rangasamy and Siegfried [22] were used for the amplification of *V-ATPase A* gene (S1 Table). All PCR amplification products were sequenced to confirm the identity and specificity. For negative control, the non-specific green fluorescence protein gene (*GFP*) was amplified from the pIZT/V5-His expression vector (Invitrogen, USA).

The amplified PCR products were purified using QIAquick PCR Purification Kit (Qiagen, Valencia, CA) and used as templates for *in vitro* dsRNA synthesis using the MEGascript high-yield transcription Kit (Applied Biosystems Inc., Foster City, CA). The synthesized dsRNAs were purified using the RNeasy Mini Kit (Qiagen, Valencia, CA) according to the manufacturer's instructions, quantified using NanoDrop ND-1000 spectrophotometer (Thermo Scientific, Franklin, MA), and then examined by agarose gel electrophoresis to determine their purity and integrity.

### Insect bioassay for functional analysis of endocytic genes

To determine the involvement of the clathrin-dependent endocytosis in dsRNA uptake in WCR, we used a similar approach to that described by Velez et al. [48]. However, we modified the time between the first and second dsRNA exposure to account for time necessary to generate gene silencing and the effect of the gene silencing on the survival of WCR adults. The bioassays with *Chc* and *Vha16* were performed in five days since silencing of these genes affected the survival of insects, with the first and second dsRNA exposure on day zero and day three.

The bioassays with *AP50*, *Arf72A*, and *Rab7* were performed over ten days since these genes had weak knockdown after three days of exposure to dsRNA. The first and second dsRNA exposures occurred on days zero and eight (Fig 1). In this experiment, both dsRNA exposures were performed by feeding. During the first dsRNA exposure, WCR adults were fed with diet plugs treated with 600 ng of *Chc*, *Vha16*, *AP50*, *Arf72A*, *Rab7*, or *GFP* dsRNA every other day. For the second dsRNA exposure, new diet plugs coated with 600 ng of *laccase2* or *GFP* dsRNA were provided to WCR adults on day three or eight, depending on the group treatment. One WCR adult was collected per replication from all the treatments immediately before and two days after the second dsRNA exposure, flash-frozen in liquid nitrogen, and stored at -80°C for total RNA extraction. Each assay was performed in triplicate with a total of 14 beetles per treatment.

### Insect bioassay for functional analysis of *silA* and *silC* genes

To determine if the lethal effect of the *V-ATPase A* dsRNA would be altered by the knockdown of *sil* genes we used a similar approach to that described by Velez et al. [48] with slight modifications. Briefly, a volume of 0.6 µl of *silA* and *silC* dsRNA at 1 µg/µl, and a mixture of *silA* and *silC* dsRNA containing equal amounts of both dsRNAs, for a total of 600 ng, were injected into individual beetles. Insects were injected between the coxae of the last pair of legs using a glass capillary syringe and then fed with untreated diet.

To determine if competitive inhibition of dsRNA occurred when multiple species-specific dsRNAs were provided to beetles, WCR adults were also injected with dsRNA targeting the non-lethal gene *laccase2*, which is required for cuticular pigmentation [49]. WCR adults injected with *GFP* dsRNA were used as controls and un-injected adults were used to evaluate the mortality associated with the injury caused by the injection. The beetles were anesthetized with carbon dioxide to facilitate injections.

For the secondary exposure to dsRNA, diet plugs (4 mm diameter x 2 mm height) were surface-treated with 500 ng of *V-ATPase A* dsRNA and provided to beetles three, five, seven, nine, and eleven days after injection. For the remainder of the assays, beetles were provided with untreated diet for a total of 14 days (Fig 2). On day seven, one beetle per replication was collected from all the treatments, flash frozen in liquid nitrogen and stored at -80°C for total RNA extraction. A total of 16 beetles were used in each treatment and mortality was recorded daily until day 14. Each assay was performed in triplicate.

### Quantitative Real Time PCR (RT-qPCR)

Total RNA was isolated from the whole bodies of adults using GeneJET RNA Purification Kit (Fermentas-Thermo Scientific, Waltham, MA) following the manufacturer’s

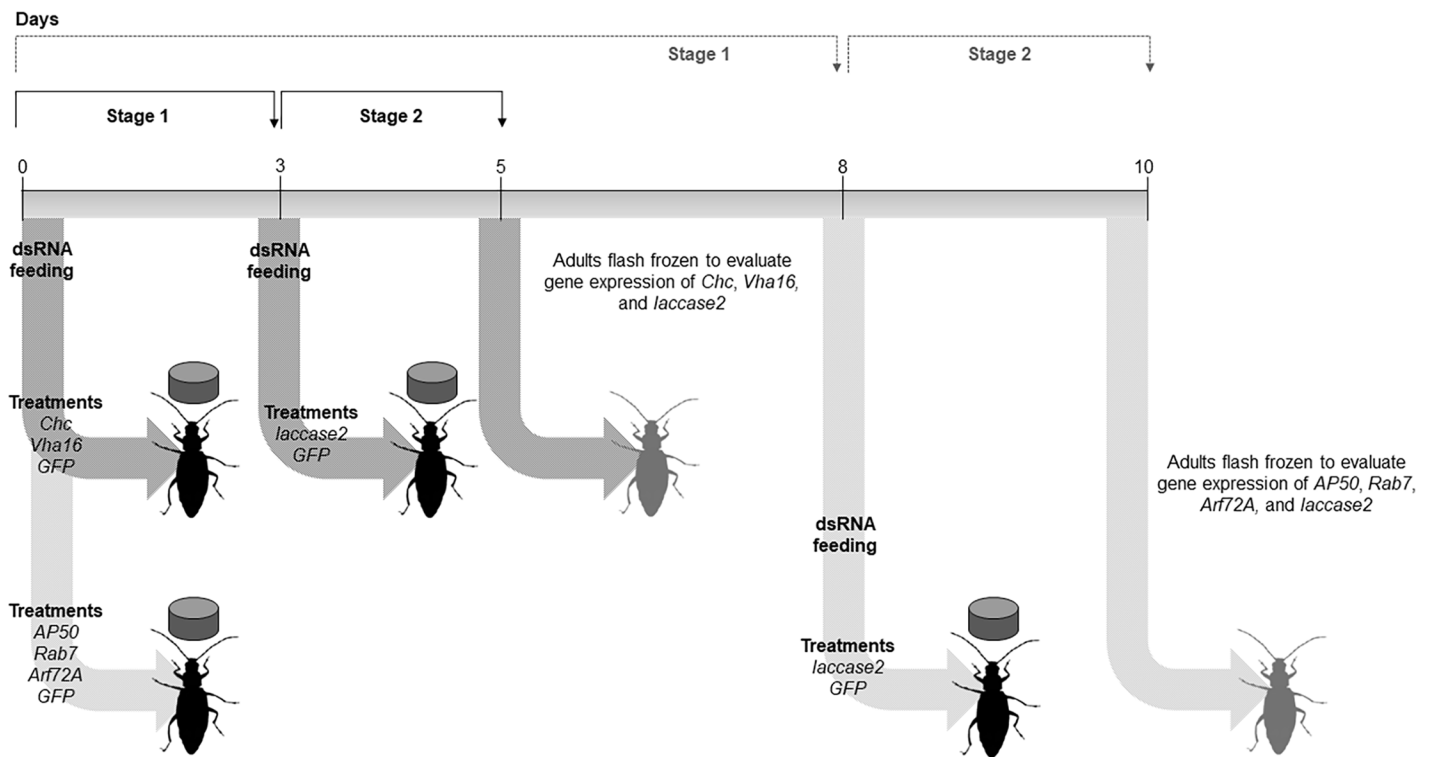
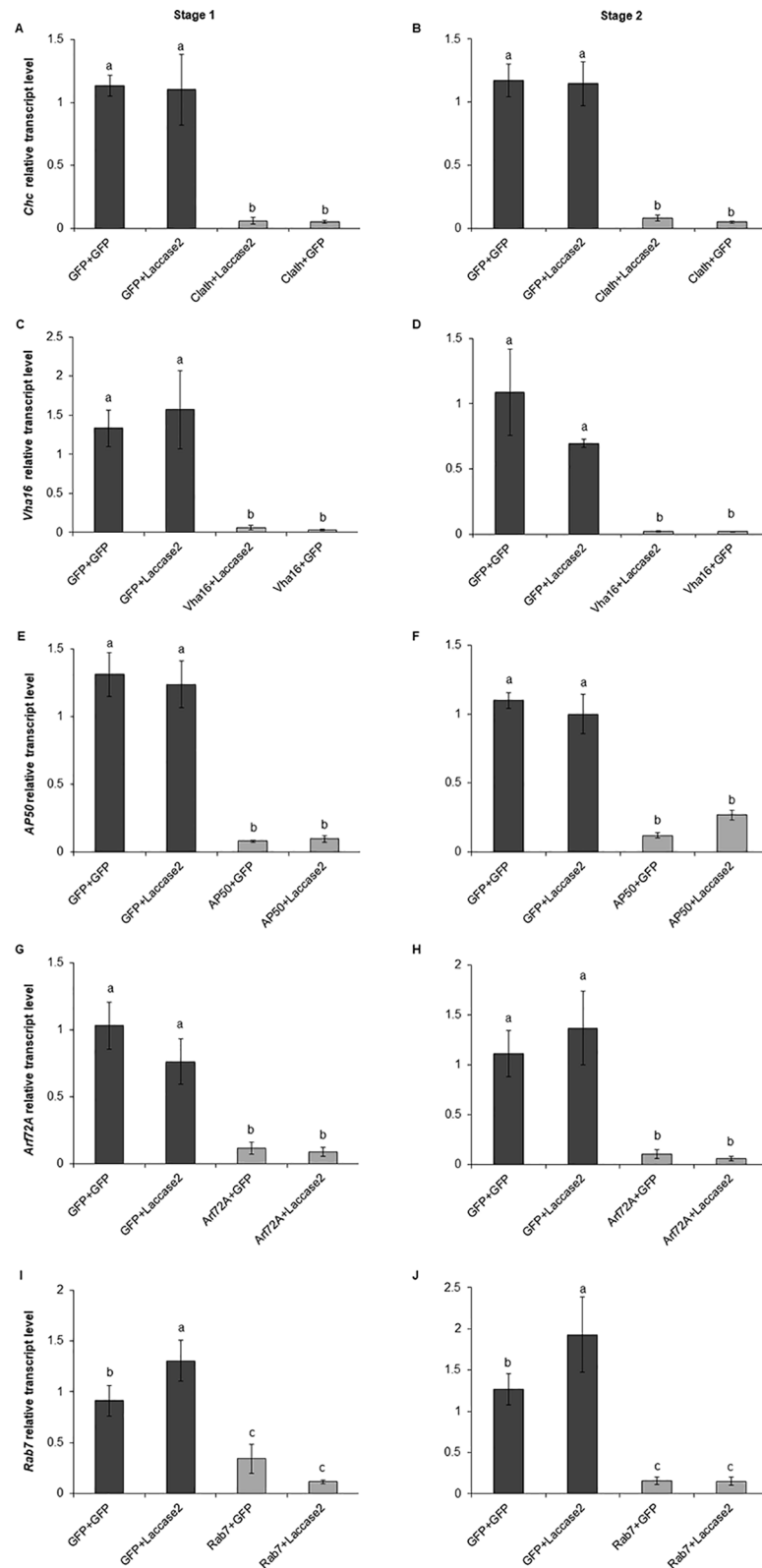


Fig 1. Two-step bioassay to determine the effect of the suppression of the endocytic genes on the expression of *laccase2* in WCR adults.

<https://doi.org/10.1371/journal.pone.0201849.g001>



**Fig 2. Relative transcript levels of the endocytosis-related genes after dsRNA exposure.** Relative transcript levels of *Chc* (A and B), *Vha16* (C and D), *AP50* (E and F), *Arf72A* (G and H), and *Rab7* (I and J) genes in WCR adults after the first (stage 1) and second (stage 2) dsRNA exposure evaluated by RT-qPCR. Values shown are the means and standard

errors ( $\pm$ SE) of three biological replicates each with two technical replicates. Different letters represent significant differences at  $p$ -value  $< 0.05$ .

<https://doi.org/10.1371/journal.pone.0201849.g002>

recommendations. cDNA was synthesized with the QuantiTect Reverse Transcription Kit (Qiagen, Valencia, CA) using 500 ng of RNA, following the manufacturer's instructions. The RT-qPCR reactions included 1  $\mu$ l of cDNA diluted 50X, 5  $\mu$ l of Fast SYBR<sup>®</sup> Green Master Mix (Applied Biosystems, Foster City, CA), 0.2  $\mu$ l at 10  $\mu$ M of each primer, and 3.6  $\mu$ l of nuclease-free water, for a total volume of 10  $\mu$ l. The primers were designed with Primer3Plus [46, 47] and validated by PCR amplification efficiencies (E) and correlation coefficients ( $R^2$ ) analysis (S2 Table).

Both primer efficiency test and RT-qPCR were performed on a 7500 Fast RT-PCR System (Applied Biosystems, Grand Island, NY). The thermocycler conditions were one cycle at 95°C for 20 s, followed by 40 cycles of denaturation at 95°C for 3 s and annealing/extension at 60°C for 30 s. At the end of each PCR reaction, a melting curve was generated to confirm a single peak and rule out the possibility of primer-dimers and nonspecific product formation. The expression of the genes was calculated using the  $2^{-\Delta\Delta CT}$  method [50]; using *actin* as reference gene which has previously demonstrated to be stable under experimental conditions in which WCR were exposed to dsRNA treatments [51]. RT-qPCR analysis was performed with three biological replicates and two technical replicates.

### Statistical analysis

Gene expression and mortality were subjected to an analysis of variance (ANOVA) using the PROC GLIMMIX procedure; least-squares differences were used to perform pairwise comparisons between treatments. All statistical analyses were performed using SAS Software version 9.4 [52]. Data were expressed as mean  $\pm$  standard error of the mean (SE), and values of  $p < 0.05$  were considered statistically significant.

## Results

### Identification of putative clathrin-dependent endocytic pathway and *sid-1*-like genes in the WCR transcriptome

A BLAST search allowed the identification of putative *Chc* (NCBI ID: KX965603), *Vha16* (KX965604), *AP50* (KX965605), *Arf72A* (KX965607), *Rab7* (KX965606), *silA* (KX965608) and *silC* (KX965609) genes in the WCR transcriptome database. We also searched for the putative *silB* gene, however, no orthologs to the *Tribolium silB* gene were found in the WCR transcriptome. Additional BLASTX analysis revealed that the deduced WCR protein sequences display high sequence identity to their orthologs from different insect species and shared the highest identity with proteins from *T. castaneum* or *L. decemlineata* [above 67%] (S3 Table). A reverse BLAST of the *C. elegans* proteome (<http://www.wormbase.org/>) using the putative WCR SILA and SILC proteins has revealed CHolesterol Uptake associated protein CHUP-1 as the closest homolog in *C. elegans* (S1 Fig).

### Knockdown of clathrin-dependent endocytosis elements impedes WCR's RNAi response

To examine the hypothesis that the clathrin-dependent endocytosis is involved in RNAi response in WCR adults, we used an "RNAi-of-RNAi" approach (Fig 1), which has been successfully used to associate *Dicer-2* and *Argonaute 2* (*AGO2*) with the RNAi pathway in WCR

[48]. For this purpose, genes encoding proteins active in steps of the endocytic pathway and possibly involved in RNAi response in other insects [32, 33, 39–43] were silenced, and the effect on *laccase2* gene knockdown was analyzed.

Gene knockdown of *Chc*, *Vha16*, *AP50*, *Arf72A*, and *Rab7* was evaluated in WCR adults after the first dsRNA exposure (stage 1) and two days after the second dsRNA exposure (stage 2) (Fig 1). In this experiment, *laccase2* was used as the reporter gene instead of *V-ATPase A* as reported by Velez et al. [48], since *Chc* and *Vha16* dsRNA generate mortality, which could lead to misinterpretation of RNAi-derived phenotype. Moreover, both the *V-ATPase A* subunit (an ortholog of *Vha68-2*) and *Vha16* encode subunits of the same functional protein complex [53], hence *V-ATPase A* was not used as a reporter. The expression levels of all five target genes were strongly reduced after the first dsRNA exposure and remained suppressed after the second dsRNA exposure to *laccase2* or *GFP* dsRNA (Fig 2). These results suggest that the expression of the endocytic genes was unaffected by the exposure to a second dsRNA and the knockdown did not decrease during the time that the WCR adults were exposed to the second dsRNA.

In WCR adults fed with *GFP* dsRNA and later with *laccase2* dsRNA, the *laccase2* expression decreased by 79.4%, relative to the control in which WCR adults were treated at both stages with *GFP* dsRNA. In contrast, when WCR adults were exposed to *AP50* dsRNA, followed by *laccase2* dsRNA, the *laccase2* expression was reduced by only 5.9% (Fig 3A). This result strongly suggests that the down-regulation of *AP50* significantly antagonizes the knockdown of *laccase2*, indicating that *AP50* plays an important role in the RNAi response in WCR adults.

We did not observe significant increase in *laccase2* expression when the WCR adults were fed with *Chc* or *Vha16* dsRNAs and subsequently treated with *laccase2* dsRNA compared to beetles fed with *GFP* dsRNA and later with *laccase2* dsRNA (Fig 3B and 3C). However, it was observed that both *Chc* and *Vha16* dsRNAs caused a reduction in *laccase2* transcript levels, 65.3% and 40.4%, respectively (Fig 3B and 3C). Therefore, it appears that the knockdown of *Chc* and *Vha16* genes also affected the expression of the reporter gene. Similar effects were observed in *Metaseius occidentalis* and *Locusta migratoria*, in which *Chc* silencing reduced the expression of the reporter genes, *cathepsin* and *methoprene-tolerant* by 40% and 88%, respectively [54].

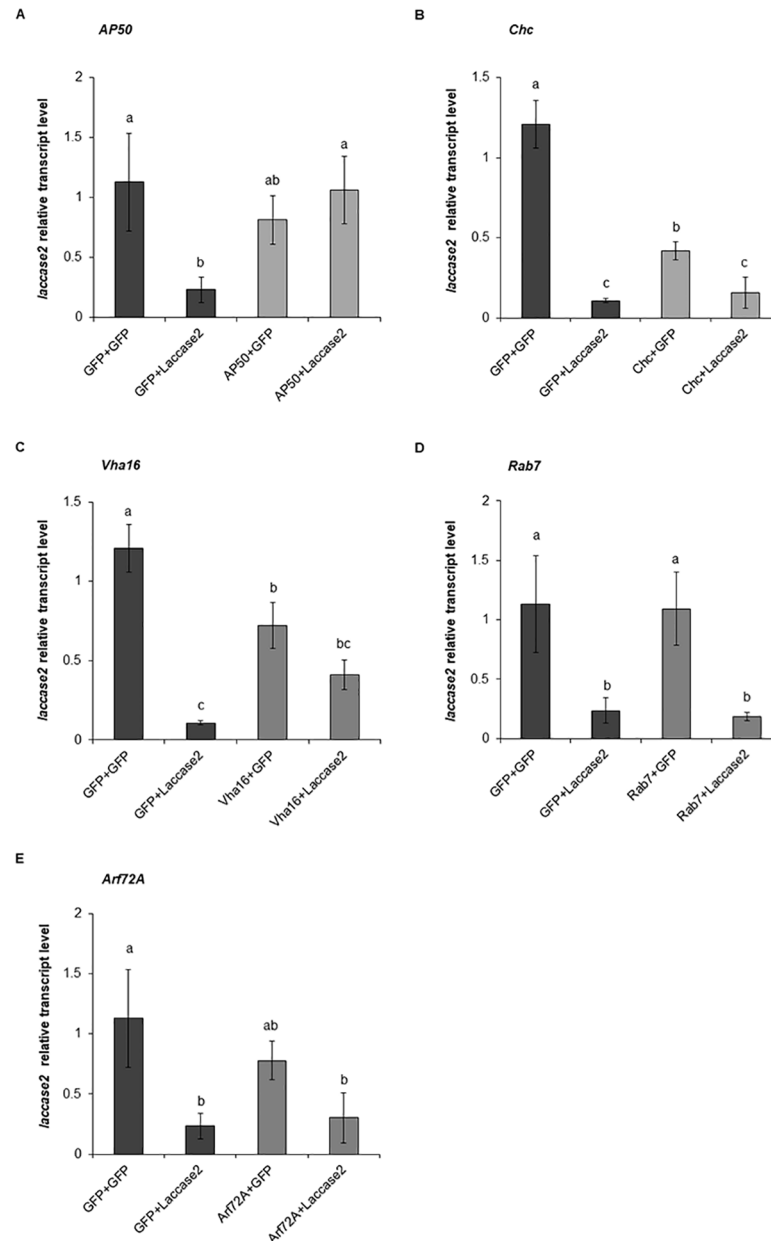
Consequently, to prevent confounding results from the *Chc+laccase2* and *Vha16+laccase2* treatments by this non-specific effect, we subsequently used a different approach, as described by Wu and Hoy [54], for the calculation of the reporter gene knockdown in order to evaluate the effect of *Chc* and *Vha16* silencing in *laccase2* expression. In this approach, *Chc+GFP* and *Vha16+GFP* were used as controls to calculate *laccase2* knockdown in *Chc+laccase2* and *Vha16+laccase2* treatments.

The gene silencing of *laccase2* in insects that were first treated with *GFP* dsRNA, followed by *laccase2* dsRNA (*GFP+GFP* and *GFP+laccase2*) was 91.1% (Fig 3B). Insects treated with *Chc* dsRNA and subsequently with *laccase2* dsRNA (*Chc+GFP* x *Chc+laccase2*) showed a reduction of *laccase2* expression by 62.5% (Fig 3B), while in beetles treated with *Vha16* dsRNA and later with *laccase2* dsRNA (*Vha16+GFP* and *Vha16+laccase2*) the *laccase2* expression decreased by 43.0% (Fig 3C). These data indicate that *Chc* and *Vha16* transcript suppression reduced the expression of *laccase2* by 28.6% and 48.1%, respectively (Fig 3B and 3C); reinforcing our hypothesis that clathrin-dependent endocytosis is required for RNAi response in WCR adults. The *Arf72A* and *Rab7* silencing, however, did not result in significant retention of *laccase2* expression (Fig 3D and 3E).

### The effect of *silA* and *silC* genes silencing on RNAi response

To determine if the SIL proteins are involved in the RNAi response in WCR adults, we performed experiments using an “RNAi-of-RNAi” approach described by Velez et al. [48] (Fig 4).

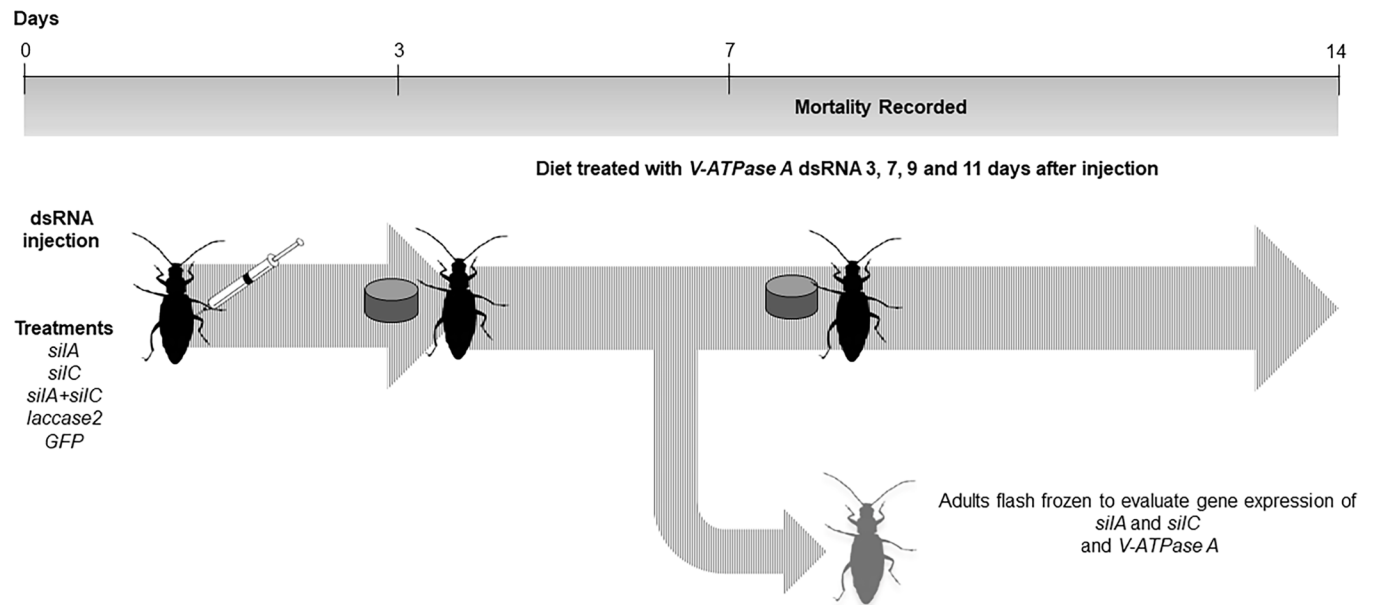




**Fig 3. Effect of the knockdown of the endocytosis-related genes on the RNAi response.** Effect of the knockdown of the *AP50* (A), *Chc* (B), *Vha16* (C), *Rab7* (D), and *Arf72A* (E) on the relative transcript level of *laccase2* was evaluated by RT-qPCR analysis. Values shown are the means and standard errors ( $\pm$ SE) of three biological replicates each with two technical replicates. Different letters represent significant differences at  $p$ -value < 0.05.

<https://doi.org/10.1371/journal.pone.0201849.g003>

In a previous study, feeding of WCR adults on artificial diet treated with dsRNA of the *Vacuolar-ATPase subunit A* (*V-ATPase A*) gene caused high mortality after 14 days of exposure [22]. Therefore, we chose *V-ATPase A* as a reporter gene to investigate the role of the SILA and SILC proteins in the RNAi response in WCR adults (Fig 4). The WCR *V-ATPase A* is most closely related to *Drosophila melanogaster Vha68-2* (CG3762), and the predicted V-type proton ATPase catalytic subunit A (XP\_976188.1) of *Tribolium castaneum*. To determine if competition for the RNAi machinery occurred between the dsRNAs from the first and the second



**Fig 4. Two-step bioassay to determine the effect of the suppression of *silA* and *silC* genes on the mortality and *V-ATPase A* expression in WCR adults.**

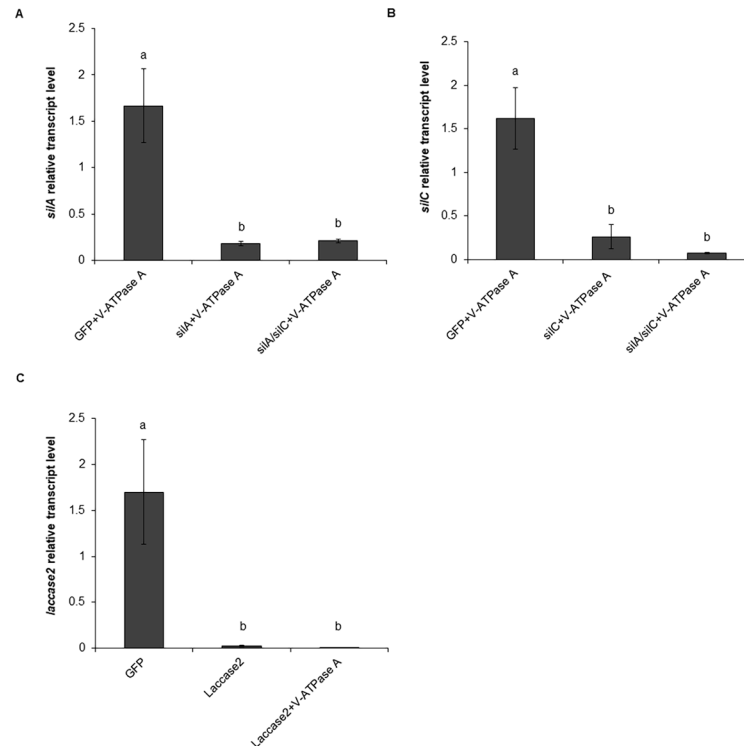
<https://doi.org/10.1371/journal.pone.0201849.g004>

exposures, a treatment group in which the WCR adults were first injected with *laccase2* dsRNA, followed by feeding with *V-ATPase A* dsRNA was included. *Laccase2* is involved in cuticular tanning [49] and is not associated with RNAi response.

Seven days after dsRNA injections a robust reduction in expression of the *silA*, *silC*, and *laccase2* genes was observed (Fig 5). Knockdown of *silA* and *silC* genes was achieved by injection of dsRNA rather than feeding, as we have previously observed higher and more consistent rates of knockdown using an injection. In the treatment group *silA*+*V-ATPase A* and *silA/silC*+*V-ATPase A*, the expression of *silA* was significantly reduced compared to the control treatment (adults injected with *GFP* dsRNA and subsequently fed with *V-ATPase A* dsRNA) by 89.1% and 87.5%, respectively (Fig 5A). The expression of *silC* in the treatment group *silC*+*V-ATPase A* and *silA/silC*+*V-ATPase A* was reduced by 83.9% and 95.5%, respectively, and was significantly different from the control (Fig 5B). Additionally, the reduction of *laccase2* expression was 98.8% and 99.6% when the WCR adults were injected with *laccase2* dsRNA and subsequently fed with untreated diet or *V-ATPase A* dsRNA, respectively (Fig 5C).

The knockdown of *laccase2* did not affect the knockdown of the *V-ATPase A* gene or the mortality of WCR adults, when compared with control insects injected with *GFP* dsRNA and fed with *V-ATPase A* dsRNA (Fig 6A and 6B). These results indicate that mortality and *V-ATPase A* expression of the treatment groups injected with *sil* dsRNA and fed with *V-ATPase A* dsRNA were not due to potential competition between dsRNAs. Furthermore, the concurrent silencing of *silA* and *silC* genes suggests that oversaturation of the RNAi machinery did not occur when a mixture of *silA* and *silC* dsRNAs was injected, at least at dsRNA concentrations that were evaluated in this assay (Fig 5A and 5B).

The down-regulation of the *silC* gene did not significantly suppress the mortality of the WCR adults, which were injected with *silC* dsRNA or with the mixture of *silA* and *silC* dsRNAs and subsequently fed with *V-ATPase A* dsRNA, compared to the control (Fig 6A). Furthermore, *V-ATPase A* transcript abundance was not significantly influenced by the down-regulation of the *silC*, implying that in WCR adults, SILC protein is not required for effective RNAi response (Fig 6B). When WCR adults were injected with *silA* dsRNA and fed with *V-ATPase A*



**Fig 5. Relative transcript level of *silA*, *silC* and *laccase2* genes after dsRNA exposure.** Relative transcript level of *silA* (A), *silC* (B) and *laccase2* (C) evaluated seven days after the injection of 600 ng of the respective dsRNA or a combination of *silA* and *silC* dsRNAs into WCR adults. Values shown are the means and standard errors ( $\pm$ SE) of three biological replicates, each with two technical replicates. Different letters represent significant differences at  $p$ -value  $< 0.05$ .

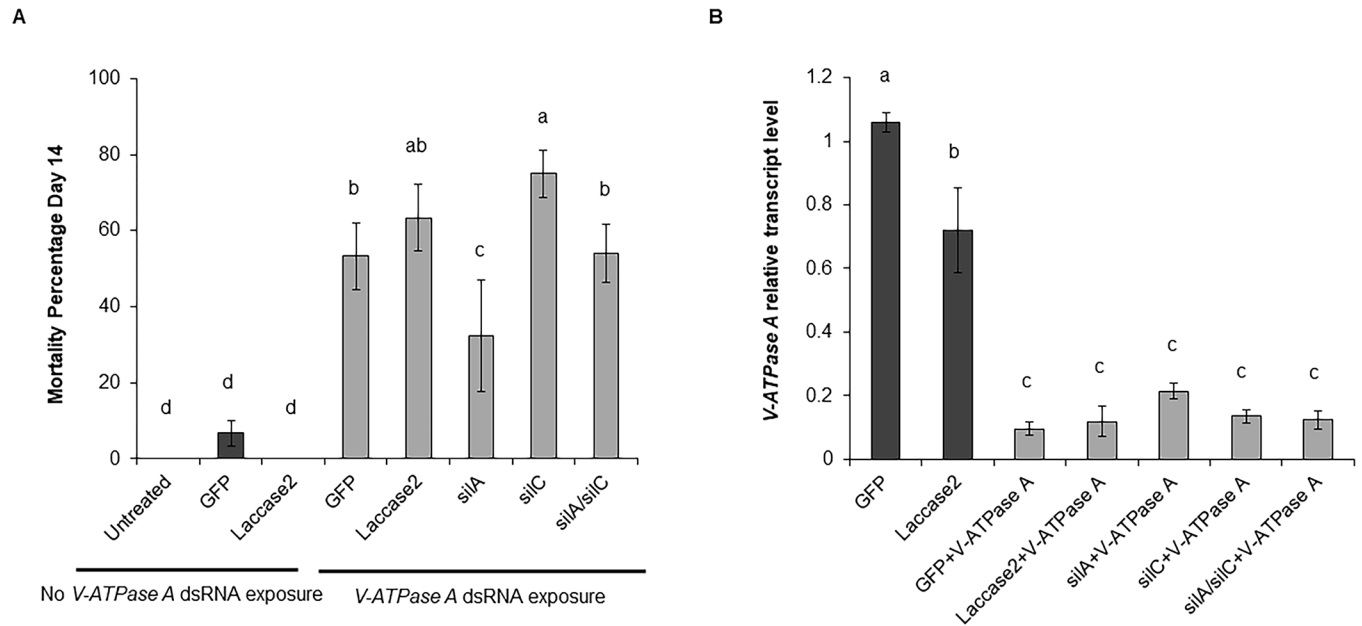
<https://doi.org/10.1371/journal.pone.0201849.g005>

dsRNA, no significant increase in *V-ATPase A* transcript abundance was observed. However, the mortality of the WCR adults was significantly reduced (Fig 6A), suggesting that the SILA protein may play a role in the RNAi response.

## Discussion

Most studies aimed at understanding the mechanisms of cellular dsRNA uptake and the systemic spread of RNAi effect in insects have focused on SIL proteins and the endocytic pathway as key participants [31–33, 39–43]. Since the level of environmental RNAi response varies greatly from one insect to another, the genes involved in this response may also vary. To elucidate which gene products are involved in dsRNA uptake in WCR, the present work investigated the impact of knocking down several components of clathrin-dependent endocytosis and homologs of SID-1 on the RNAi response in WCR beetles. The genes evaluated in this study included WCR endocytosis-related targets *Chc*, *Vha16*, *AP50*, *Arf72A*, *Rab7* and SID-like genes *SilA* and *SilC*.

Role of the endocytic pathway in dsRNA uptake has been demonstrated in *D. melanogaster* S2 cells, and confirmed in *S. gregaria*, *L. decemlineata*, *T. castaneum* and *B. dorsalis*, suggesting that this mechanism of dsRNA internalization might be widespread among insects [32, 33, 39–42]. A study by Ulvila et al. [33] confirmed that *Chc* was necessary for dsRNA uptake in *Drosophila* S2 cells, by bypassing this pathway via transfection. Further, studies in S2 cells [32] and *T. castaneum* [41] have confirmed the involvement of clathrin-mediated endocytosis in RNAi response by pharmacological block via bafilomycin-A1 and bafilomycin-A1 or



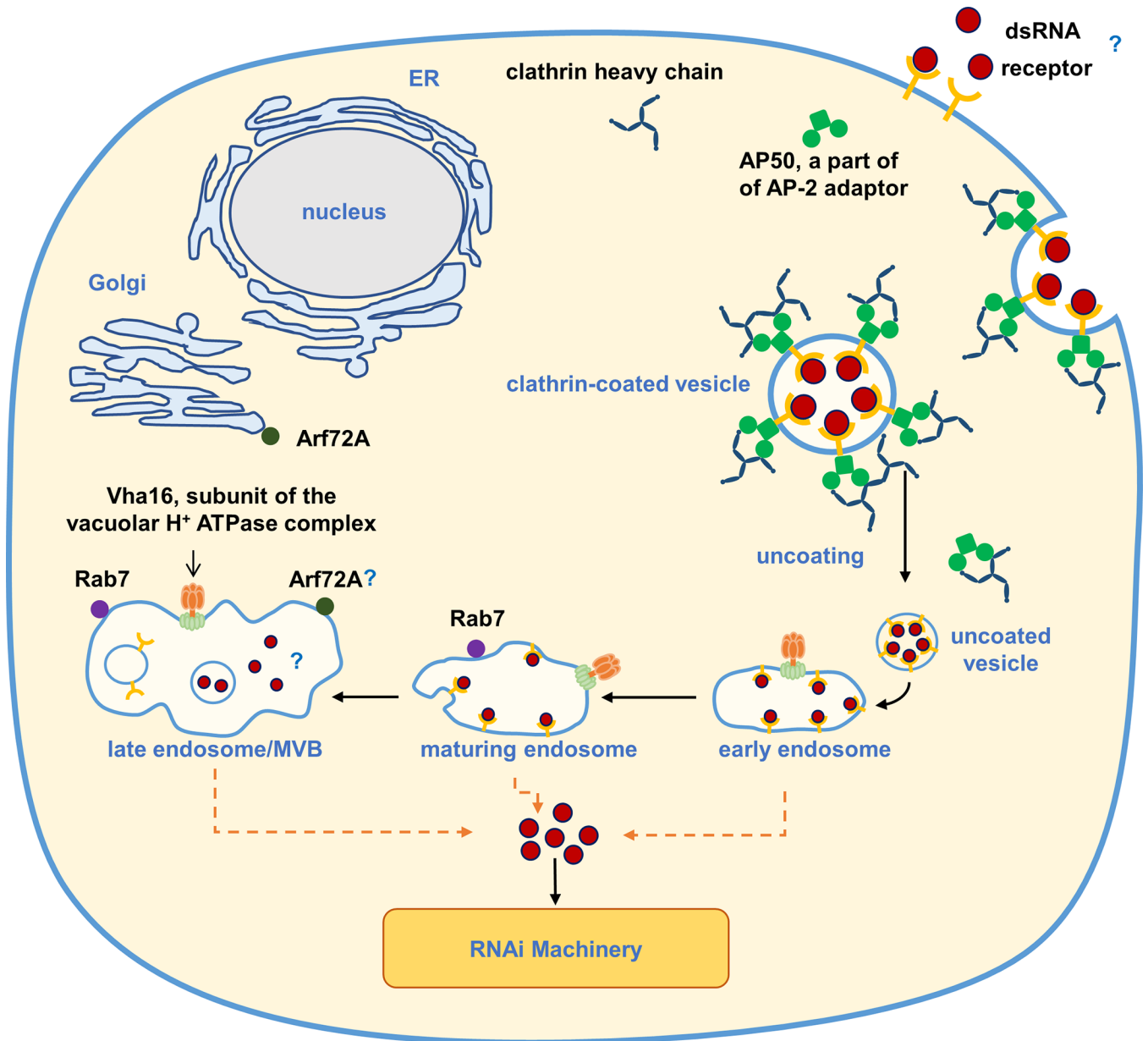
**Fig 6. Mortality of WCR adults and relative *V-ATPase A* expression.** (A) Mortality of WCR adults from the different treatment groups after 14 days. WCR adults were injected with 600 ng of *GFP*, *laccase2*, *silA*, *silC*, or a combination of *silA* and *silC* dsRNAs and subsequently fed with *V-ATPase A* dsRNA. WCR adults injected with *GFP* and not exposed to *V-ATPase A* dsRNA were used as controls. (B) Relative *V-ATPase A* transcript levels were evaluated by RT-qPCR seven days after exposed to *V-ATPase A* dsRNA. Values shown are the means and standard errors ( $\pm$ SE) of three biological replicates. Different letters represent significant differences at  $p$ -value < 0.05.

<https://doi.org/10.1371/journal.pone.0201849.g006>

chlorpromazine, respectively. Xiao et al. [41] showed that both bafilomycin-A1 and chlorpromazine can block the uptake of fluorescently-labeled dsRNA by larval midgut cells. While by their nature, the RNAi-of-RNAi experiments performed in the current study cannot identify which part of RNAi process is perturbed, by extension, the genes identified in our study as key participants in RNAi response are likely to be involved in dsRNA uptake.

In the present study, knockdown of WCR endocytic genes, *AP50*, *Chc*, and *Vha16* reduced the subsequent knockdown of the reporter gene *laccase2* (Fig 3A–3C), confirming that the endocytic pathway participates in the RNAi response. Results from this study support the observations in coleopteran insects *L. decemlineata* and *T. castaneum*, where silencing of endocytosis-related genes *Chc* and *Vha16*, reduced the subsequent RNAi response [41–43]. Anchoring on *AP50*, *Chc*, and *Vha16* results, we identified clathrin-mediated endocytosis as being essential for a robust RNAi response in WCR.

In contrast to the robust effects of *AP50*, *Chc*, and *Vha16* on RNAi response in WCR, knockdown of *Arf72A* and *Rab7* did not result in significant increase of *laccase2* expression (Fig 3D and 3E). Although we observed no effect for *Rab7* and *Arf72A*, partial block of the RNAi response was observed in *L. decemlineata* (Lepd-SL1) cells and *T. castaneum* when these genes were silenced [41, 43]. Unlike *Chc* or *Vha16*, which may be necessary throughout the endocytic cycle, *Rab7* is associated with late endosomes/multivesicular bodies. *Arf72A*/*Arf1* is known to associate primarily with the Golgi network [35, 55] and binds AP1 clathrin adaptor [37] (Fig 7). To become available to the RNAi machinery in the cytosol, the dsRNA needs to escape from the early to late endosomes before they fuse with lysosomal compartments [56]. It is hence possible that sufficient *laccase2* dsRNA escaped in the earlier steps of the endocytosis, thus the knockdown of *Arf72A* and *Rab7* genes did not significantly affect the expression of *laccase2*. These hypotheses are further supported by the fact that in coleopteran insects dsRNA



**Fig 7. Known components of clathrin-mediated endocytosis involved in the RNAi response in WCR.**

<https://doi.org/10.1371/journal.pone.0201849.g007>

escape from the endosomal compartments appears to be an efficient process leading to a robust RNAi response [57].

The RNAi-of-RNAi approach used in this study implicated Clathrin heavy chain (Chc), Clathrin adaptor protein AP50 (AP50), and Vacuolar H<sup>+</sup> ATPase 16 kDa subunit (Vha16) in the RNAi response of WCR. Rab7 is necessary for clathrin-mediated endocytosis, it associates with late endosomes/multivesicular bodies and may function downstream of the dsRNA release into cytoplasm. Arl1/Arf72A associates with trans-Golgi.

In the case of Arf72A, it is possible that its effect on the uptake of dsRNA is indirect, since blocking Arl1/Arf72A causes the dispersion of AP1, which affects secretory granule biogenesis and clathrin exchange [37]. Similarly, depletion of Arl1 protein (Arl1p) in *Saccharomyces*

*cerevisiae* leads to both decreased protein uptake and secretion since the regulation of membrane traffic is disturbed [58]. Therefore, the block of Arf72A seems to perturb important processes involved in the clathrin pathway, which could interfere in the dsRNA uptake or transport.

The insect studies of SID-like genes have been driven largely by the knowledge from systemic RNAi deficiencies (SID) identified in *C. elegans* mutagenesis screens. The transmembrane protein systemic RNA interference deficiency-1 (SID-1) is necessary for the uptake of dsRNA in *C. elegans*, enabling systemic spread of the RNAi effect [24]. The presence of *C. elegans* *sid-1* homologues has been confirmed in multiple insects including *Schistocerca americana*, *Spodoptera exigua*, *Spodoptera litura*, *Spodoptera frugiperda*, *Aphis glycines*, *Aphis gossypii*, *Anthonomus grandis*, *Nilaparva lugens*, *Apis mellifera*, *L. decemlineata*, and *D. v. virgifera* larvae [31, 42, 59–67]. However, as observed in our study, the presence of *sil* genes in insects does not assure the participation of SIL proteins in RNAi response. In our study, only *silA* significantly suppressed the *V-ATPase A* knockdown phenotype in WCR adults (Fig 6A). However, this data was not reflected by a commensurate reduction in *V-ATPase A* transcript levels (Fig 6B). We did not observe an impact of *silC* on the RNAi response at either transcript or phenotypic levels. Nevertheless, since the nature of RNAi-of-RNAi experiments does not assure full knockdown of the gene targets, it is possible that some SILA or SILC protein remained. Additionally, the half-life of the SIL proteins may allow them to remain functional while their transcripts are largely depleted. Therefore, the participation of *D. v. virgifera* SILA or SILC proteins in dsRNA response cannot be ruled out.

The participation of the *sil* genes in the RNAi response has been suggested in *N. lugens*, *L. decemlineata* and *D. v. virgifera* larvae [31, 42, 66]. In *L. decemlineata*, it has been reported that *silA* and *silC* are necessary for an effective RNAi response [42, 43]. Further, the silencing of *silA* promoted stronger suppression of reporter gene knockdown compared to the silencing of *silC* [42]. A study performed with WCR larvae demonstrated through an “RNAi-of-RNAi” approach that the silencing of *silA* and *silC* genes suppressed the RNAi phenotype of the *ebony* gene, suggesting the involvement of both *sil* genes in dsRNA response [31]. However, the phenotype resulting from *ebony* RNAi was not pronounced [31], suggesting that these proteins probably are not the unique mechanism associated with the uptake of dsRNA in WCR.

Reports for other insects including *L. migratoria*, *S. gregaria*, *Plutella xylostella* and *T. castaneum* indicate that the *sil* genes are not involved in systemic RNAi [30, 39, 68, 69]. Detailed sequence analysis of the SIL proteins has revealed that in some insects the N-terminal extracellular domain shares more identity with the TAG-130/CHUP-1 protein of *C. elegans*, involved with cholesterol internalization, than with the SID-1 protein [30, 68]. We also noted that both WCR SILA and SILC are more similar to the *C. elegans* cholesterol uptake protein CHUP-1 (S1 Fig). Thus, it is possible that the WCR SILA and SILC proteins perform functions associated with cholesterol uptake rather than dsRNA transport [70], and any CHUP-1-associated phenotypes may occur indirectly, through interference with cholesterol endocytic pathway [71] with subsequent impact on membrane transport.

In summary, the comparison of clathrin-mediated endocytosis and *sil* genes in the RNAi response of WCR suggests that clathrin-dependent endocytosis is more likely to be the primary mechanism for the import of dsRNA in this insect. Further experiments using either WCR biological stages or a coleopteran cell culture similar to those performed by Yoon et al. [43] and Yoon et al. [72] focused on monitoring dsRNA uptake by cells and its movement will help shed light on dsRNA uptake and spread in WCR. Overall, our research provides a starting point for future studies, which surely will have important implications for the development, efficacy, and improvement of RNAi-based management strategies directed to control WCR populations.

## Supporting information

**S1 Table. Primer sequences used for dsRNA synthesis.**

(DOCX)

**S2 Table. Primer sequences and parameters used for qRT-PCR analysis.**

(DOCX)

**S3 Table. Genes found in WCR transcriptome and their percentage of amino acid sequence identity with other insect species.**

(DOCX)

**S1 Fig. Sequence alignments and phylogenetic relationships of SIL proteins from WCR.**

(DOCX)

## Author Contributions

**Conceptualization:** Daniele H. Pinheiro, Ana M. Vélez, Elane Fishilevich, Haichuan Wang, Newton P. Carneiro, Blair D. Siegfried.

**Data curation:** Daniele H. Pinheiro, Ana M. Vélez, Elane Fishilevich, Blair D. Siegfried.

**Formal analysis:** Daniele H. Pinheiro, Ana M. Vélez.

**Funding acquisition:** Blair D. Siegfried.

**Investigation:** Daniele H. Pinheiro, Ana M. Vélez, Newton P. Carneiro, Arnubio Valencia-Jiménez.

**Methodology:** Daniele H. Pinheiro, Ana M. Vélez, Haichuan Wang, Newton P. Carneiro, Arnubio Valencia-Jiménez.

**Project administration:** Ana M. Vélez, Blair D. Siegfried.

**Resources:** Ana M. Vélez, Fernando H. Valicente, Blair D. Siegfried.

**Supervision:** Ana M. Vélez.

**Validation:** Daniele H. Pinheiro, Ana M. Vélez.

**Visualization:** Daniele H. Pinheiro, Ana M. Vélez, Elane Fishilevich.

**Writing – original draft:** Daniele H. Pinheiro, Ana M. Vélez, Elane Fishilevich.

**Writing – review & editing:** Daniele H. Pinheiro, Ana M. Vélez, Elane Fishilevich, Haichuan Wang, Fernando H. Valicente, Kenneth E. Narva, Blair D. Siegfried.

## References

1. Bally J, McIntyre GJ, Doran RL, Lee K, Perez A, Jung H, et al. In-plant protection against *Helicoverpa armigera* by production of long hpRNA in chloroplasts. *Frontiers in plant science*. 2016; 7:1453. <https://doi.org/10.3389/fpls.2016.01453> PubMed Central PMCID: PMC5040858. PMID: 27746796
2. Baum JA, Bogaert T, Clinton W, Heck GR, Feldmann P, Ilagan O, et al. Control of coleopteran insect pests through RNA interference. *Nature biotechnology*. 2007; 25(11):1322–6. <https://doi.org/10.1038/nbt1359> PMID: 17982443
3. Jin S, Singh ND, Li L, Zhang X, Daniell H. Engineered chloroplast dsRNA silences cytochrome p450 monooxygenase, V-ATPase and chitin synthase genes in the insect gut and disrupts *Helicoverpa armigera* larval development and pupation. *Plant biotechnology journal*. 2015; 13(3):435–46. Epub 2015/03/19. <https://doi.org/10.1111/pbi.12355> PMID: 25782349

4. Mao YB, Cai WJ, Wang JW, Hong GJ, Tao XY, Wang LJ, et al. Silencing a cotton bollworm P450 monooxygenase gene by plant-mediated RNAi impairs larval tolerance of gossypol. *Nature biotechnology*. 2007; 25(11):1307–13. <https://doi.org/10.1038/nbt1352> PMID: 17982444
5. Ni M, Ma W, Wang X, Gao M, Dai Y, Wei X, et al. Next-generation transgenic cotton: pyramiding RNAi and Bt counters insect resistance. *Plant biotechnology journal*. 2017; 15(9):1204–13. <https://doi.org/10.1111/pbi.12709> PMID: 28199783
6. Pitino M, Coleman AD, Maffei ME, Ridout CJ, Hogenhout SA. Silencing of aphid genes by dsRNA feeding from plants. *PloS one*. 2011; 6(10):e25709. <https://doi.org/10.1371/journal.pone.0025709> PMID: 21998682
7. Zhang J, Khan SA, Hasse C, Ruf S, Heckel DG, Bock R. Pest control. Full crop protection from an insect pest by expression of long double-stranded RNAs in plastids. *Science*. 2015; 347(6225):991–4. <https://doi.org/10.1126/science.1261680> PMID: 25722411
8. Baum JA, Roberts JK. Progress towards RNAi-mediated insect pest management. *Advances in Insect Physiology*. 2014; 47:249–95.
9. Joga MR, Zotti MJ, Smagghe G, Christiaens O. RNAi Efficiency, Systemic Properties, and Novel Delivery Methods for Pest Insect Control: What We Know So Far. *Frontiers in physiology*. 2016; 7:553. Epub 2016/12/03. <https://doi.org/10.3389/fphys.2016.00553> PMID: 27909411
10. Terenius O, Papanicolaou A, Garbutt JS, Eleftherianos I, Huvenne H, Kanginakudru S, et al. RNA interference in Lepidoptera: an overview of successful and unsuccessful studies and implications for experimental design. *Journal of insect physiology*. 2011; 57(2):231–45. Epub 2010/11/17. <https://doi.org/10.1016/j.jinsphys.2010.11.006> PMID: 21078327
11. Sappington TW, Siegfried BD, Guillemaud T. Coordinated *Diabrotica* Genetics Research: Accelerating Progress on an Urgent Insect Pest Problem 2006-04-01 00:00:00. 90–7 p.
12. Devos Y, Meihls LN, Kiss J, Hibbard BE. Resistance evolution to the first generation of genetically modified *Diabrotica*-active Bt-maize events by western corn rootworm: management and monitoring considerations. *Transgenic research*. 2013; 22(2):269–99. <https://doi.org/10.1007/s11248-012-9657-4> PMID: 23011587
13. Gassmann AJ, Petzold-Maxwell JL, Clifton EH, Dunbar MW, Hoffmann AM, Ingber DA, et al. Field-evolved resistance by western corn rootworm to multiple *Bacillus thuringiensis* toxins in transgenic maize. *Proceedings of the National Academy of Sciences of the United States of America*. 2014; 111(14):5141–6. <https://doi.org/10.1073/pnas.1317179111> PMID: 24639498
14. Levine E, Spencer JL, Isard SA, Onstad DW, Gray ME. Adaptation of the western corn rootworm to crop rotation: evolution of a new strain in response to a cultural management practice. *American Entomologist*. 2002; 48:94–107.
15. Meinke LJ, Siegfried BD, Wright RJ, Chandler LD. Adult susceptibility of Nebraska western corn rootworm (Coleoptera: Chrysomelidae) populations to selected insecticides. *Journal of Economic Entomology*. 1998; 91(3):594–600. <https://doi.org/10.1093/jee/91.3.594>
16. Metcalf RL. Implications and prognosis of resistance to insecticides. In: Georgiou GP, Saito T, editors. *Pest Resistance to Pesticides*. New York: Plenum Press; 1983. p. 769–92.
17. van Rozen K, Ester A. Chemical control of *Diabrotica virgifera virgifera* LeConte. *Journal of Applied Entomology*. 2010; 134(5):376–84. <https://doi.org/10.1111/j.1439-0418.2009.01504.x>
18. Wangila DS, Gassmann AJ, Petzold-Maxwell JL, French BW, Meinke LJ. Susceptibility of Nebraska Western Corn Rootworm (Coleoptera: Chrysomelidae) Populations to Bt Corn Events. *Journal of Economic Entomology*. 2015; 108(2):742–51. Epub 2015/10/16. <https://doi.org/10.1093/jee/tou063> PMID: 26470186
19. Alves AP, Lorenzen MD, Beeman RW, Foster JE, Siegfried BD. RNA interference as a method for target-site screening in the Western corn rootworm, *Diabrotica virgifera virgifera*. *Journal of Insect Science*. 2010; 10:162. Epub 2010/11/12. <https://doi.org/10.1673/031.010.14122> PMID: 21067417
20. Hu X, Richtman NM, Zhao J-Z, Duncan KE, Niu X, Procyk LA, et al. Discovery of midgut genes for the RNA interference control of corn rootworm. *Scientific Reports*. 2016; 6:30542. <https://doi.org/10.1038/srep30542> PMID: 27464714
21. Li H, Khajuria C, Rangasamy M, Gandra P, Fitter M, Geng C, et al. Long dsRNA but not siRNA initiates RNAi in western corn rootworm larvae and adults. *Journal of Applied Entomology*. 2015; 139(6):432–45.
22. Rangasamy M, Siegfried BD. Validation of RNA interference in western corn rootworm *Diabrotica virgifera virgifera* LeConte (Coleoptera: Chrysomelidae) adults. *Pest Management Science*. 2012; 68(4):587–91. PMID: 22500293
23. Feinberg EH, Hunter CP. Transport of dsRNA into cells by the transmembrane protein SID-1. *Science*. 2003; 301(5639):1545–7. <https://doi.org/10.1126/science.1087117> PMID: 12970568



24. Winston WM, Molodowitch C, Hunter CP. Systemic RNAi in *C. elegans* requires the putative transmembrane protein SID-1. *Science*. 2002; 295(5564):2456–9. <https://doi.org/10.1126/science.1068836> PMID: 11834782
25. McEwan DL, Weisman AS, Hunter CP. Uptake of extracellular double-stranded RNA by SID-2. *Molecular cell*. 2012; 47(5):746–54. <https://doi.org/10.1016/j.molcel.2012.07.014> PubMed Central PMCID: PMC3488460. PMID: 22902558
26. Winston WM, Sutherlin M, Wright AJ, Feinberg EH, Hunter CP. *Caenorhabditis elegans* SID-2 is required for environmental RNA interference. *Proceedings of the National Academy of Sciences of the United States of America*. 2007; 104(25):10565–70. <https://doi.org/10.1073/pnas.0611282104> PMID: 17563372
27. Jose AM, Kim YA, Leal-Ekman S, Hunter CP. Conserved tyrosine kinase promotes the import of silencing RNA into *Caenorhabditis elegans* cells. *Proceedings of the National Academy of Sciences of the United States of America*. 2012; 109(36):14520–5. <https://doi.org/10.1073/pnas.1201153109> PMID: 22912399
28. Hinas A, Wright AJ, Hunter CP. SID-5 Is an Endosome-Associated Protein Required for Efficient Systemic RNAi in *C. elegans*. *Curr Biol*. 2012; 22(20):1938–43. <https://doi.org/10.1016/j.cub.2012.08.020> PMID: 22981770
29. Rocheleau CE. RNA Interference: Systemic RNAi SIDes with Endosomes. *Curr Biol*. 2012; 22(20):R873–R5. <https://doi.org/10.1016/j.cub.2012.08.039> PMID: 23098595
30. Tomoyasu Y, Miller SC, Tomita S, Schoppmeier M, Grossmann D, Bucher G. Exploring systemic RNA interference in insects: a genome-wide survey for RNAi genes in *Tribolium*. *Genome Biol*. 2008; 9(1):R10. <https://doi.org/10.1186/gb-2008-9-1-r10> PMID: 18201385
31. Miyata K, Ramaseshadri P, Zhang Y, Segers G, Bolognesi R, Tomoyasu Y. Establishing an *in vivo* assay system to identify components involved in environmental RNA interference in the western corn rootworm. *PloS one*. 2014; 9(7):e101661. Epub 2014/07/09. <https://doi.org/10.1371/journal.pone.0101661> PMID: 25003334.
32. Saleh MC, van Rij RP, Hekele A, Gillis A, Foley E, O'Farrell PH, et al. The endocytic pathway mediates cell entry of dsRNA to induce RNAi silencing. *Nature cell biology*. 2006; 8(8):793–802. Epub 2006/07/25. <https://doi.org/10.1038/ncbl439> PMID: 16862146
33. Ulvila J, Parikka M, Kleino A, Sormunen R, Ezekowitz RA, Kocks C, et al. Double-stranded RNA is internalized by scavenger receptor-mediated endocytosis in *Drosophila* S2 cells. *The Journal of biological chemistry*. 2006; 281(20):14370–5. Epub 2006/03/15. <https://doi.org/10.1074/jbc.M513868200> PMID: 16531407.
34. McMahon HT, Boucrot E. Molecular mechanism and physiological functions of clathrin-mediated endocytosis. *Nat Rev Mol Cell Bio*. 2011; 12(8):517–33. <https://doi.org/10.1038/nrm3151> PMID: 21779028
35. Donaldson JG, Jackson CL. ARF family G proteins and their regulators: roles in membrane transport, development and disease (vol 12, pg 362, 2011). *Nat Rev Mol Cell Bio*. 2011; 12(8). <https://doi.org/10.1038/nrm3159>
36. Lu L, Horstmann H, Ng C, Hong W. Regulation of Golgi structure and function by ARF-like protein 1 (Ar1). *Journal of Cell Science*. 2001; 114(Pt 24):4543–55. Epub 2002/01/17. PMID: 11792819.
37. Torres IL, Rosa-Ferreira C, Munro S. The Arf family G protein Ar11 is required for secretory granule biogenesis in *Drosophila*. *Journal of Cell Science*. 2014; 127(10):2151–60. <https://doi.org/10.1242/jcs.122208> PMID: 24610947
38. Hyttinen JMT, Niittykoski M, Salminen A, Kaarniranta K. Maturation of autophagosomes and endosomes: A key role for Rab7. *Bba-Mol Cell Res*. 2013; 1833(3):503–10. <https://doi.org/10.1016/j.bbamcr.2012.11.018> PMID: 23220125
39. Wynant N, Santos D, Van Wielendaele P, Vanden Broeck J. Scavenger receptor-mediated endocytosis facilitates RNA interference in the desert locust, *Schistocerca gregaria*. *Insect Molecular Biology*. 2014; 23(3):320–9. <https://doi.org/10.1111/imb.12083> PMID: 24528536
40. Li XX, Dong XL, Zou C, Zhang HY. Endocytic pathway mediates refractoriness of insect *Bactrocera dorsalis* to RNA interference. *Scientific Reports*. 2015; 5. doi: ARTN 8700 <https://doi.org/10.1038/srep08700> PMID: 25731667
41. Xiao D, Gao XW, Xu JP, Liang X, Li QQ, Yao JX, et al. Clathrin-dependent endocytosis plays a predominant role in cellular uptake of double-stranded RNA in the red flour beetle. *Insect Biochem Molec*. 2015; 60:68–77. <https://doi.org/10.1016/j.ibmb.2015.03.009> PMID: 25863352
42. Cappelle K, de Oliveira C, Van Eynde B, Christiaens O, Smagghe G. The involvement of clathrin-mediated endocytosis and two Sid-1-like transmembrane proteins in double-stranded RNA uptake in the Colorado potato beetle midgut. *Insect Molecular Biology*. 2016; 25(3):315–23. <https://doi.org/10.1111/imb.12222> PMID: 26959524

43. Yoon JS, Shukla JN, Gong ZJ, Mogilicherla K, Palli SR. RNA interference in the Colorado potato beetle, *Leptinotarsa decemlineata*: Identification of key contributors. *Insect Biochem Molec.* 2016; 78:78–88. <https://doi.org/10.1016/j.ibmb.2016.09.002> PMID: 27687845
44. Branson TF, Jackson JJ. An improved diet for adult *Diabrotica virgifera virgifera* (Coleoptera, Chrysomelidae). *J Kansas Entomol Soc.* 1988; 61(3):353–5.
45. Eyun SI, Wang HC, Pauchet Y, Ffrench-Constant RH, Benson AK, Valencia-Jimenez A, et al. Molecular Evolution of Glycoside Hydrolase Genes in the Western Corn Rootworm (*Diabrotica virgifera virgifera*). *PLoS one.* 2014; 9(4). doi: ARTN e94052 <https://doi.org/10.1371/journal.pone.0094052> PMID: 24718603
46. Koressaar T, Remm M. Enhancements and modifications of primer design program Primer3. *Bioinformatics.* 2007; 23(10):1289–91. <https://doi.org/10.1093/bioinformatics/btm091> PMID: 17379693
47. Untergasser A, Cutcutache I, Koressaar T, Ye J, Faircloth BC, Remm M, et al. Primer3-new capabilities and interfaces. *Nucleic Acids Res.* 2012; 40(15). doi: ARTN e115 <https://doi.org/10.1093/nar/gks596> PMID: 22730293
48. Velez AM, Khajuria C, Wang H, Narva KE, Siegfried BD. Knockdown of RNA Interference Pathway Genes in Western Corn Rootworms (*Diabrotica virgifera virgifera* Le Conte) Demonstrates a Possible Mechanism of Resistance to Lethal dsRNA. *PLoS one.* 2016; 11(6). doi: ARTN e0157520 <https://doi.org/10.1371/journal.pone.0157520> PMID: 27310918
49. Arakane Y, Muthukrishnan S, Beeman RW, Kanost MR, Kramer KJ. Laccase 2 is the phenoloxidase gene required for beetle cuticle tanning. *Proceedings of the National Academy of Sciences of the United States of America.* 2005; 102(32):11337–42. <https://doi.org/10.1073/pnas.0504982102> PMID: 16076951
50. Livak KJ, Schmittgen TD. Analysis of relative gene expression data using real-time quantitative PCR and the 2-(Delta Delta CT) method. *Methods.* 2001; 25(4):402–8. <https://doi.org/10.1006/meth.2001.1262> PMID: 11846609
51. Rodrigues TB, Khajuria C, Wang H, Matz N, Cunha Cardoso D, Valicente FH, et al. Validation of reference housekeeping genes for gene expression studies in western corn rootworm (*Diabrotica virgifera virgifera*). *PLoS one.* 2014; 9(10):e109825. <https://doi.org/10.1371/journal.pone.0109825> PMID: 25356627; PubMed Central PMCID: PMC4214676.
52. SAS-Institute. SAS User's Manual, Version 9.3. Cary, NC2011.
53. Allan AK, Du J, Davies SA, Dow JA. Genome-wide survey of V-ATPase genes in *Drosophila* reveals a conserved renal phenotype for lethal alleles. *Physiol Genomics.* 2005; 22(2):128–38. Epub 2005/04/28. <https://doi.org/10.1152/physiolgenomics.00233.2004> PMID: 15855386
54. Ren D, Cai Z, Song J, Wu Z, Zhou S. dsRNA uptake and persistence account for tissue-dependent susceptibility to RNA interference in the migratory locust, *Locusta migratoria*. *Insect Molecular Biology.* 2014; 23(2):175–84. <https://doi.org/10.1111/imb.12074> PMID: 24308607
55. Lee J, Lee J, Ju BG. *Drosophila* arf72A acts as an essential regulator of endoplasmic reticulum quality control and suppresses autosomal-dominant retinopathy. *Int J Biochem Cell B.* 2011; 43(9):1392–401. <https://doi.org/10.1016/j.biocel.2011.06.004> PMID: 21693198
56. Dominska M, Dykxhoorn DM. Breaking down the barriers: siRNA delivery and endosome escape. *Journal of Cell Science.* 2010; 123(8):1183–9. <https://doi.org/10.1242/jcs.066399> PMID: 20356929
57. Shukla JN, Kalsi M, Sethi A, Narva KE, Fishilevich E, Singh S, et al. Reduced stability and intracellular transport of dsRNA contribute to poor RNAi response in lepidopteran insects. *RNA biology.* 2016; 13(7):656–69. Epub 2016/06/02. <https://doi.org/10.1080/15476286.2016.1191728> PMID: 27245473
58. Rosenwald AG, Rhodes MA, Van Valkenburgh H, Palanivel V, Chapman G, Boman A, et al. ARL1 and membrane traffic in *Saccharomyces cerevisiae*. *Yeast.* 2002; 19(12):1039–56. <https://doi.org/10.1002/yea.897> PMID: 12210899
59. Aronstein K, Pankiw T, Saldivar E. SID-I is implicated in systemic gene silencing in the honey bee. *Journal of Apicultural Research.* 2006; 45(1):20–4.
60. Bansal R, Michel AP. Core RNAi machinery and Sid1, a component for systemic RNAi, in the hemipteran insect, *Aphis glycines*. *Int J Mol Sci.* 2013; 14(2):3786–801. <https://doi.org/10.3390/ijms14023786> PMID: 23396108
61. Dong Y, Friedrich M. Nymphal RNAi: systemic RNAi mediated gene knockdown in juvenile grasshopper. *Bmc Biotechnol.* 2005; 5. doi: Artn 25 <https://doi.org/10.1186/1472-6750-5-25>. PMID: 16202143
62. Firmino AAP, Fonseca FCD, de Macedo LLP, Coelho RR, de Souza JDA, Togawa RC, et al. Transcriptome Analysis in Cotton Boll Weevil (*Anthonomus grandis*) and RNA Interference in Insect Pests. *PLoS one.* 2013; 8(12). doi: UNSP e85079 <https://doi.org/10.1371/journal.pone.0085079> PMID: 24386449
63. Ghosh S, Kakumani PK, Kumar A, Malhotra P, Mukherjee SK, Bhatnagar RK. Genome wide screening of RNAi factors of Sf21 cells reveal several novel pathway associated proteins. *Bmc Genomics.* 2014; 15. doi: Artn 775 <https://doi.org/10.1186/1471-2164-15-775> PMID: 25199785

64. Gong L, Wang Z, Wang HD, Qi JW, Hu MY, Hu QB. Core RNAi Machinery and Three Sid-1 Related Genes in *Spodoptera litura* (Fabricius). *Int J Agric Biol*. 2015; 17(5):937–44.
65. Tian HG, Peng H, Yao Q, Chen HX, Xie Q, Tang B, et al. Developmental Control of a Lepidopteran Pest *Spodoptera exigua* by Ingestion of Bacteria Expressing dsRNA of a Non-Midgut Gene. *PLoS one*. 2009; 4(7). doi: ARTN e6225 <https://doi.org/10.1371/journal.pone.0006225> PMID: 19593438
66. Xu HJ, Chen T, Ma XF, Xue J, Pan PL, Zhang XC, et al. Genome-wide screening for components of small interfering RNA (siRNA) and micro-RNA (miRNA) pathways in the brown planthopper, *Nilaparvata lugens* (Hemiptera: Delphacidae). *Insect Molecular Biology*. 2013; 22(6):635–47. <https://doi.org/10.1111/imb.12051> PMID: 23937246
67. Xu WN, Han ZJ. Cloning and phylogenetic analysis of sid-1-like genes from aphids. *Journal of Insect Science*. 2008; 8.
68. Luo Y, Wang XH, Yu D, Kang L. The SID-1 double-stranded RNA transporter is not required for systemic RNAi in the migratory locust. *RNA biology*. 2012; 9(5):663–71. <https://doi.org/10.4161/ma.19986> PubMed PMID: WOS:000306528800018. PMID: 22614832
69. Wang HD, Gong L, Qi JW, Hu MY, Zhong GH, Gong L. Molecular cloning and characterization of a SID-1-like gene in *Plutella xylostella*. *Arch Insect Biochem*. 2014; 87(3):164–76. <https://doi.org/10.1002/arch.21189> PMID: 25136969
70. Whangbo JS, Weisman AS, Chae J, Hunter CP. SID-1 Domains Important for dsRNA Import in *Caenorhabditis elegans*. *G3-Genes Genom Genet*. 2017; 7(12):3887–99. <https://doi.org/10.1534/g3.117.300308> PMID: 29025917
71. Valdes VJ, Athie A, Salinas LS, Navarro RE, Vaca L. CUP-1 Is a Novel Protein Involved in Dietary Cholesterol Uptake in *Caenorhabditis elegans*. *PLoS one*. 2012; 7(3). doi: ARTN e33962 <https://doi.org/10.1371/journal.pone.0033962> PMID: 22479487
72. Yoon JS, Gurusamy D, Palli SR. Accumulation of dsRNA in endosomes contributes to inefficient RNA interference in the fall armyworm, *Spodoptera frugiperda*. *Insect Biochem Mol Biol*. 2017; 90:53–60. Epub 2017/09/28. <https://doi.org/10.1016/j.ibmb.2017.09.011> PMID: 28951282