

1 **Sequential Post-Heading Applications for Controlling Wheat Blast: A Nine-Year** 2 **Summary of Fungicide Performance in Brazil**

3 João P. Ascari^{1†}, Jhonatan P. Barro^{1†}, Flávio M. Santana², José M.V. Padua³, João L. N. Maciel²,
4 Douglas Lau², Gisele A. M. Torres², Cheila C. Sbalcheiro², Claudine D. S. Seixas⁴, Augusto C.
5 P. Goulart⁵, Angelo A. B. Sussel⁶, Carlos A. Schipanski⁷, Débora F. Chagas⁷, Maurício A. O.
6 Coelho⁸, Tatiane D. N. Montecelli⁹, Daniel R. Amaral¹⁰, Adriano A. P. Custódio¹¹, Lucas S. O.
7 Moreira¹¹, Carlos M. Utiamada¹², Wilson S. Venâncio¹³, Rita C. S. Goussain¹⁴, Kaique S.
8 Alves¹, Emerson M. Del Ponte^{1*}

9
10 ¹ Departamento de Fitopatologia, Universidade Federal de Viçosa, Viçosa, 36570-900, MG, Brazil

11 ² Embrapa Trigo, Passo Fundo, 99050-970, RS, Brazil

12 ³ Departamento de Agricultura, Universidade Federal de Lavras, Lavras, 37200-900, MG, Brazil

13 ⁴ Embrapa Soja, Londrina, 86001-970, PR, Brazil

14 ⁵ Embrapa Agropecuária Oeste, Dourados, 79804-970, MS, Brazil

15 ⁶ Embrapa Cerrados, Planaltina, 73310-970, DF, Brazil

16 ⁷ G12 Agro Pesquisa e Consultoria Agronômica, Guarapuava, 85015-344, PR, Brazil

17 ⁸ Empresa de Pesquisa Agropecuária de Minas Gerais, Patos de Minas, 38700-970, MG, Brazil

18 ⁹ Coodetec, Cascavel, 85818-650, PR, Brazil

19 ¹⁰ Instituto Federal do Triângulo Mineiro Uberaba, 38064-790, MG, Brazil

20 ¹¹ Área de Proteção de Plantas, Instituto Agronômico do Paraná, Londrina, 86047-902, PR, Brazil

21 ¹² Tagro, Londrina, 86070-460, PR, Brazil

22 ¹³ Estação Experimental Agrícola Campos Gerais, Palmeira, 84130-000, PR, Brazil

23 ¹⁴ Instituto Federal do Mato Grosso, Campo Verde, 78840-000, MT, Brazil

24

25 † These authors contributed equally

26 *Corresponding author: delponte@ufv.br

28 Abstract

29 Wheat blast, caused by *Pyricularia oryzae Triticum* (PoT) lineage, is a major constraint to wheat
30 production, mainly in the tropics of Brazil where severe epidemics have been more frequent. We
31 analyzed disease and wheat yield data from 42 uniform field trials conducted during nine years
32 (2012 to 2020) in order to assess whether the percent control and yield response were influenced
33 by fungicide type, region (tropical or subtropical), and year. Six treatments were selected, all
34 evaluated in at least 19 trials. Two fungicides were applied as solo active ingredients:
35 MANCozeb, and TEBUconazole, and four were premixes: AZOXystrobin + TEBU,
36 TriFLoXystrobin + PROThioconazole, TFLX + TEBU, and PYRAclostrobin + EPOXiconazole.
37 Percent control, calculated from back-transforming estimates by a meta-analysis network model
38 fitted to the log of the means, ranged from 43 to 58%, with all but PYRA + EPOX showing
39 efficacy greater than 52% on average, not differing among them. The variation in both efficacy
40 and yield response was explained by region and all but TEBU performed better in the subtropics
41 than in the tropics. Yield response from using three sequential sprays was around two times
42 greater in the subtropics (319 to 532 kg/ha) than in the tropics (149 to 241.3 kg/ha). No
43 significant decline in fungicide efficacy or yield response was observed in nine years of study for
44 any of the fungicides. Our results reinforce the need to improve control by adopting an integrated
45 management approach in the tropics given the poorer performance and lower profitability,
46 especially for the premixes, than in the subtropics.

47 **Keywords:** *Pyricularia oryzae*, chemical control, profitability, meta-analysis

48

49 Introduction

50 Wheat blast is caused by *Pyricularia oryzae Triticum* lineage (PoT, syn *Magnaporthe oryzae*,
51 MoT), an ascomycete fungus first found in 1985 in the state of Paraná, Brazil (Igarashi et al.
52 1986). Since then, wheat blast has spread to other wheat-growing countries in South America,
53 including Bolivia, Paraguay, Argentina, and Uruguay (Cruz and Valent 2017; Ceresini et al.
54 2018). About thirty years after its discovery, the global concern with wheat blast epidemics
55 increased significantly after its report in South Asia (Malaker et al. 2016), and East Africa
56 (Zambia) (Tembo et al. 2020).

57 The fungus infects both the leaves and the heads of the wheat plant, but infections that occur
58 during the reproductive stage are more frequent and of major economic significance; complete
59 bleaching of heads may occur, severely affecting grain filling (Cruz and Valent 2017; Ceresini et

60 al. 2018). Foliar infections are generally mild in wheat but may increase in severity, and
61 importance for head infections, when warm and wet weather prevails during the early season
62 (Cruz et al. 2016; Perelló et al. 2017). An early study reported a 27% reduction in yield due to
63 wheat blast (Goulart et al. 1990), but yield losses up to 70% may occur depending on the
64 infection timing, weather conditions, and cultivar susceptibility (Goulart and Paiva 2000).

65 Although the disease is present over a wide range of latitudes, the most severe epidemics have
66 been reported in wheat-growing regions in the tropics, during the summer/fall season sowings,
67 such as those in Central Brazil and Bolivia (Pagani et al. 2014; Cruz and Valent 2017), and more
68 recently, in Bangladesh (Islam et al. 2019). Because epidemics are favored by the occurrence of
69 temperatures between 25°C and 30°C, 10 hours or more of leaf wetness, and 24 to 48 hours of
70 relative humidity >90%, wheat blast epidemics are particularly more damaging in the tropics
71 than in the subtropics (Uddin et al. 2003; Cardoso et al. 2008; Silva et al. 2021).

72 Once the wheat blast pathogen is introduced, the necrotrophic fungus is capable of infecting
73 and surviving in other grasses nearby wheat fields which are assumed to serve as a source of
74 inoculum for epidemics in wheat if they are present prior to the wheat season (Tosa and Chuma
75 2014; Urashima et al. 2017; Ceresini et al. 2019). The ability of the fungus to disperse over long
76 distances is not entirely known but evidence has shown that *Pyricularia* spores can disperse
77 through air currents up to 1 km distant from the source (Urashima et al. 2007), or across
78 continents via infected seeds (Ceresini et al. 2018). Although several control methods have been
79 explored in research, including biological control agents (Chakraborty et al. 2020a, 2020b), the
80 combination of cultural (Coelho et al. 2016), nutritional (Xavier Filha et al. 2011; Silva et al.
81 2016), genetic, and chemical control have been commercially feasible and more effective in
82 disease management (Cruz et al. 2019; Cruppe et al. 2020).

83 Several chemicals have been evaluated for the control of the disease since the first blast
84 epidemics in Brazil (Goulart and Paiva 1993; Santana et al. 2013). These studies have shown that
85 two to three sequential applications of fungicides may be required for disease control, yet with
86 relatively modest levels of control being achieved (Santana et al. 2013). Currently, fifty-three
87 commercial fungicides have been registered for wheat blast control in Brazil (AGROFIT 2021).
88 These include Quinone outside Inhibitor (QoI) and Demethylation Inhibitor (DMI) marketed
89 solely or mixed together, but also multi-site mode of action fungicides such as mancozeb.

90 Despite the importance of wheat blast, the number of publications on chemical control of
91 wheat blast is relatively small and the results are inconsistent. Successful control with efficacy as
92 high as 90% has been achieved when combining the use of QoI + DMI premix and less
93 susceptible cultivar (Rios et al. 2016). However, levels as low as 45% efficacy have been

94 reported in susceptible cultivars grown at very favorable environments for blast outbreaks in the
95 Brazilian Cerrado (Pagani *et al.* 2014). In Bangladesh, 19-commercial fungicides had their
96 efficacy tested on a susceptible cultivar, and the blast control levels ranged from 43 to 96% (Roy
97 *et al.* 2020). A 23-environment fungicide trial conducted in Brazil and Bolivia reported various
98 levels of efficacy for QoI, DMI, and multi-site fungicides depending on disease pressure (Cruz *et al.*
99 *et al.* 2019).

100 Meta-analytic approaches have become standard to summarize the effect of treatments for
101 fungicide testing data, including wheat diseases (Paul *et al.* 2008, 2018a; Machado *et al.* 2017;
102 Barro *et al.* 2019, 2020). Uniform fungicide trials targeting wheat blast control were established
103 in 2011 and performed yearly following a standardized protocol. The main goal of the network is
104 to gather information on disease control and yield loss prevention across the main growing
105 regions. The data have been analyzed and published as technical reports (Santana *et al.*, 2014;
106 2016a; 2016b; 2019a; 2019b; 2020a; 2020b). Data from the first three years of the cooperative
107 trials have been published in combination with Bolivian data (Cruz *et al.* 2019), but several
108 questions remained, including those related to differences between regions, years and
109 profitability of fungicide applications. Using data collected from an additional six-year period,
110 totaling 26 new trials, our objectives were to: 1) obtain meta-analytic estimates of wheat head
111 blast control efficacy and yield response; 2) evaluate whether the estimates vary over years,
112 regions, and on different levels of disease or yield; and 3) calculate fungicide profitability based
113 on the break-even probabilities.

114

115 **Material and Methods**

116 **Data source.** Data were obtained from 44 field trials conducted by researchers of the wheat
117 blast cooperative fungicide trial network (Rede de Ensaios Cooperativos de Brusone do Trigo)
118 during nine years (seasons) (2012 to 2020). The data have been published primarily in yearly
119 single reports for ranking fungicide efficacy (Santana *et al.* 2013, 2014, 2016a, 2016b, 2016c,
120 2019a, 2019b, 2020a, 2020b). Data from the 2020 season has not been published.

121 The trials were conducted in eleven municipalities across six Brazilian States: Paraná (PR),
122 São Paulo (SP), Distrito Federal (DF), Mato Grosso (MT), Mato Grosso do Sul (MS), and Minas
123 Gerais (MG) (Fig. 1). The trials were grouped into two climatic regions: Tropical (19 trials [DF,
124 MT, MS, MG]) and Subtropical (25 trials [PR, SP]).

125

126 **Experimental procedures.** A susceptible variety, adapted for the respective region, was used
127 in the trials (data not shown), and all agronomic practices (fertilization, weeds, and pest control)
128 were performed according to regional recommendations (Comissão Brasileira de Pesquisa de
129 Trigo e Triticale 2020). The trials were conducted following a completely randomized block
130 design with four replications (a plot of 12 m² was a replication). All fungicides were applied
131 three times, starting at the heading stage (60 of Zadoks growth stages) (Zadoks et al. 1974), and
132 following 7 to 10 days apart. A backpack sprayer pressurized by CO₂ calibrated to spray 200
133 L/ha was used to perform the applications.

134
135 **Wheat blast and grain yield assessments.** Head blast incidence (INC) (proportion of
136 diseased head) and conditional severity (SEV) (proportion of diseased spikelets in the diseased
137 head) (Maciel et al. 2013) were visually assessed in 1-m of each of the two central rows, at
138 wheat grain soft dough stage (85 of Zadoks growth stages) (Zadoks et al. 1974). Wheat blast
139 index (WBI) was calculated as $WBI = (INC * SEV) / 100$. Yield was obtained by harvesting the
140 central rows (4 m²) at full maturity. Grain weight and moisture were obtained for each treatment
141 plot (fungicide + untreated). Crop yield was expressed in kg/ha at 13% moisture.

142
143 **Fungicide treatment selection.** To be included in the analysis, a fungicide treatment should
144 have been tested in at least 19 trials conducted in at least four years and compared with an
145 untreated check in the same trial. Six fungicides met the criteria, including four DMI + QoI
146 premixes, and two single active ingredients (Table 1). After treatment selection, WBI and grain
147 yield data were available in 42 trials each.

148
149 **Network meta-analysis and inconsistency.** The data were available at the plot level for all
150 treatments for each variable of interest (WBI and grain yield). These were aggregated at the trial
151 level, which is a typical approach used in the meta-analysis (Madden et al. 2016). We fitted an
152 arm-based network model, also known as a two-way unconditional linear mixed model, directly
153 to the treatment means (log-transformed or untransformed) to further obtain control efficacy and
154 yield response (Paul et al. 2008; Machado et al. 2017). Given the statistical properties of the data
155 (Supplemental Fig. S1), means of WBI were log-transformed, while no transformation was
156 required to obtain the mean difference in grain yield. The arm-based model can be written as

157
158
$$Y_i \sim N(\mu, \Sigma + S_i), \quad (1)$$

159

160 where Y_i is the vector of L (log of the means of WBI) or absolute yield (D) for the six treatments
 161 plus the untreated check for the i th study, μ is a vector representing the mean of Y_i across all
 162 studies, Σ is a 7 x 7 between-study variance-covariance matrix (for the six treatments plus the
 163 untreated check), and S_i is a within-study variance-covariance matrix for the i th study. N
 164 indicates a multivariate normal distribution.

165 For this approach, a measure of within-study variability is required to weight studies based on
 166 the inverse function of the sampling variance (Paul et al. 2008, 2010). Given the availability of
 167 data at the plot level, the within-study variability of L and D was calculated from the mean
 168 square error (MSE) obtained from a linear mixed model fitted to each individual trial, as
 169 described (Machado et al. 2017). Maximum likelihood estimation models were fitted to the data
 170 using the *rma.mv* function of *metafor* package (Viechtbauer 2010) of R (R Core Team 2021).

171 The yield response (\bar{D}) was calculated directly after model fitting by subtracting estimated
 172 means of fungicide treatment and untreated check (Madden et al. 2016). For percent wheat blast
 173 control (\bar{C}), we calculated the differences of the estimated means of the logs (\bar{L}_{IND}) which equals
 174 the ratio of the two means (Paul et al. 2008). The \bar{C} values and their 95% confidence intervals
 175 (CIs) were obtained by back-transforming \bar{L}_{IND} and the respective upper and lower limits of their
 176 95% CIs as described in Equation 2.

$$177 \quad \bar{C} = (1 - \exp(\bar{L}_{IND})) \times 100 \quad (2)$$

178
 179
 180 Network inconsistency, or the extent to which different sources of evidence are compatible, is
 181 an important component to assess when performing a multi-arm network meta-analysis (Higgins
 182 et al. 2012). The most important source is a design-by-treatment interaction, also known as
 183 "design inconsistency", which provides a useful general framework for investigating
 184 inconsistency (Piepho 2014; Madden et al. 2016). To test for network inconsistency, we used a
 185 factorial-type ANOVA model to determine the significance of the *treatment* x *design* interaction,
 186 evaluated based on the Wald test statistic. The null hypothesis suggests that the network is
 187 consistent (Piepho 2014; Madden et al. 2016). Eight different designs (here design refers to the
 188 set of fungicide treatments in the trial) were found in the trials reporting both WBI and yield
 189 response (Supplemental Table S1).

190

191 **Moderator effects.** Categorical or continuous moderator variables that could explain, at least
192 a portion of the heterogeneity of the effects across trials, were included in the network model
193 (Equation 1) (Madden et al. 2016). The expanded model is given by

$$194 \quad Y_i \sim N(\mu + \delta_i, \Sigma + S_i), \quad (3)$$

195

196
197 where δ_i is the vector representing the moderator variable effect for the i th study (Paul et al.
198 2010). All other terms were defined previously at Equation 1.

199 As categorical, we created baselines for WBI and wheat grain yield based on the median of
200 the mean values in the untreated check. For baseline disease index, the trials were divided into
201 two groups, representing WBI_low (WBI < 10%) and WBI_high (WBI ≥ 10%) disease scenarios.
202 The baseline yield was defined as YLD_low (< 1200 kg/ha) or YLD_high (≥ 1200 kg/ha) based
203 on the median yield in the untreated check plot. Finally, we created an additional categorical
204 variable based on climatic region where trials were grouped into Tropical (DF, MT, MS, MG)
205 and Subtropical (PR, SP) regions as mentioned previously (Fig. 1). As continuous moderators,
206 year was included in the model to check whether there was any trend of decline in fungicide
207 efficacy or yield response over time (Dalla Lana et al. 2018).

208 The moderator variables included in the model were tested using a Wald-type chi-square test
209 to determine if their inclusion directly affected the differences in logs of WBI and the
210 untransformed yield values (Paul et al. 2008).

211

212 **Economic analysis.** Monte Carlo simulations were used to produce distributions of profits
 213 that each fungicide would have in each region (Subtropical and Tropical) based on their
 214 respective yield return (D , kg/ha). The profit was calculated from the difference between the
 215 income (I , US\$/ha) and spraying cost (US\$/ha), where I is the product of D and the wheat price
 216 (P , US\$/kg). D was assumed to follow a truncated normal distribution between 0 and $+\infty$, $D \sim$
 217 $TN(\mu_D, \sigma_D)$, where μ_D is the mean D given by the estimated yield return (\bar{D}), and the σ_D is the
 218 standard deviation which was given by standard error of (\bar{D}), i.e. $SE(\bar{D})$. P was assumed to
 219 follow a Gamma distribution, $P \sim \text{Gamma}(\alpha, \beta)$, where α and β are the shape and the rate
 220 parameters, respectively. To estimate these parameters, we gathered wheat price historical data
 221 from the AGROLINK database from January 2012 to May 2021 (AGROLINK 2021). Two
 222 methods were used to estimate the parameters: nonlinear regression using least-squares to fit the
 223 empirical cumulative distribution function to the gamma cumulative distribution function, and
 224 maximum likelihood estimation (MLE). We used a two-sample Kolmogorov-Smirnov test (KS-
 225 test) to evaluate the best estimates, in which the parameters that produce distribution with higher
 226 P -value in the KS-test against the empirical cumulative distribution.

227 The overall fungicide spraying cost (x) accounting for fungicide price of 2019/20 crop season,
 228 and operational cost of 10 US\$/application for three applications are described in Table 1. The
 229 spraying cost (S_C) was assumed to follow be uniformly distributed with values varying from 5%
 230 above and below the overall fungicide spraying cost (x), therefore, $S_C \sim Unif(0.95x, 1.05x)$.

231 We ran a total of 50,000 Monte Carlo simulations for each variable (P , D , and S_C), the
 232 distribution of I was obtained and then the distribution of profits was derived. Break-even
 233 probabilities were calculated as the relative frequency of values that the income was equal to or
 234 higher than the fungicide spraying cost ($I \geq C$).

235

236 Results

237 **Wheat blast index (WBI) and yield data at the trial level.** There was considerable variation
 238 in WBI and grain yield in the untreated plots across seasons, regions, and locations/trials (each
 239 point in Fig. 2 represents a single trial). WBI in the untreated plots of the trials ranged from 0 to
 240 100% (median 11.06%). The median WBI was higher (12.3%) in the Tropical than in the
 241 Subtropical (8.1%) region (Fig. 2 B). Across growing seasons, the highest (89.8%) and the
 242 lowest (0.8%) WBI medians in the untreated check were recorded in the 2019 and 2017 seasons,
 243 respectively (Fig. 2 C).

244 Baseline yield ranged from 15.6 to 4,276.2 kg/ha (median = 1,203.5 kg/ha) across the trials.
 245 The median yield was lower in the Tropical (1,000 kg/ha) than in the Subtropical region (1,281

246 kg/ha) (Fig. 2 E). The highest median yield (2,173 kg/ha) was observed in 2014 and the lowest
247 (571.6 kg/ha) in the 2019 crop season (Fig. 2 F). As expected, lower WBI and higher grain yield
248 was observed in the fungicide treatments compared with the untreated check (Fig. 2 A to 2 D).

249
250 **Overall meta-analytic estimates of control efficacy and yield response.** For all fungicides
251 tested in the meta-analytic model, the overall WBI log response ratio (\bar{L}_{IND}) differed ($P <$
252 0.0001) from the untreated CHECK (Supplemental Table S2). Overall estimates of percent
253 control efficacy (\bar{C}), obtained from back-transforming differences of the estimates of log of WBI
254 (\bar{L}_{IND}) between the fungicide-treated and untreated plots, ranging from 43.2% and 58.0%.
255 MANC, AZOX + TEBU, TFLX + PROT, TEBU, and TFLX + TEBU reduced WBI by at least
256 52% and did not differ significantly among them ($P > 0.12$) based on linear contrasts. PYRA +
257 EPOX was the least effective treatment (43.2%) and did not differ from TEBU (53.5%; $P = 0.07$)
258 and TFLX + TEBU (52.2%; $P = 0.06$) (Supplemental Table S2). The difference in percent
259 control efficacy between the most and least effective fungicide was 14.8 percent points (Table
260 2). The Wald test for the treatment x design interaction showed that the network was consistent
261 ($P = 0.70$).

262 Yield response (\bar{D}) was significantly higher ($P < 0.0001$) in all single a.i. and dual mixtures
263 compared with the untreated CHECK (Table S3). The mean estimates of \bar{D} ranged from 181.15
264 kg/ha to 420.10 kg/ha. The two single a.i. treatments, MANC (420.10 kg/ha) and TEBU (319.46
265 kg/ha) provided the greatest yield response, and linear contrasts showed no difference between
266 them ($P = 0.065$). These were followed by AZOX + TEBU (301.48 kg/ha) and TFLX+PROT
267 (299.73 kg/ha), which were not different between them ($P = 0.90$), but differed from
268 TFLX+TEBU (245.34 kg/ha; $P < 0.0001$). All fungicides differed from PYRA + EPOX (181.15
269 kg/ha) with regards to yield response. The difference between the highest and lowest yield
270 response among the treatments was 238.95 kg/ha (Table 2, Table S3). The Wald test for the
271 treatment x design interaction showed that the network was inconsistent, meaning that results
272 were dependent on the design ($P = 0.01$).

273
274 **Effect of moderator variables.** The categories of WBI and wheat grain yield as baselines did
275 not affect WBI or yield ($P > 0.05$). Similarly, year did not affect wheat grain yield ($P = 0.26$) or
276 WBI ($P = 0.74$), suggesting no decline in fungicide efficacy or yield response over time.

277 Based on the Wald test ($P < 0.0001$), the expanded model including the categorical moderator
278 variable region differed statistically from the simpler model for both disease index and yield
279 response. The control efficacy in the Subtropical region was numerically higher compared to the

280 Tropical region for all treatments. A difference of at least 19.1 percent points in \bar{C} between
 281 regions was significant ($P < 0.05$) for three fungicides (PYRA + EPOX, TFLX + PROT and
 282 MANC) (Table 2). Similarly, yield response from the use of fungicides was generally higher in
 283 the Subtropical than in the Tropical region. There was a statistical difference in \bar{D} between
 284 regions for all fungicides, except TEBU ($P = 0.1836$). Significant differences in yield responses
 285 between regions ranged from 200 to 291 kg/ha (Table 2).

286 In general, there was a similar pattern in the relationship between yield response and
 287 fungicide efficacy among regions. The treatment leading to the greatest mean yield response in
 288 both Tropical and Subtropical regions was MANC (Fig. 3). Similarly, MANC was the
 289 numerically most effective treatment in reducing disease index in the Subtropical region. For the
 290 Tropical region, TEBU and AZOX + TEBU exhibited a high control efficacy (~47%). Again,
 291 PYRA + EPOX provided the least yield response in both Tropical and Subtropical regions (Fig.
 292 3).

293
 294 **Profits and break-even probabilities.** Estimates of parameters of the Gamma distribution for
 295 the distribution of wheat prices for the 2012 to 2020 period that produced higher P -value in the
 296 KS-test were obtained using non-linear regression ($P = 0.9375$). The P -value in the KS-test for
 297 the parameters estimated using MLE was 0.11. The estimates of the shape (α) and the rate (β)
 298 parameters were 19.4 and 0.54, respectively.

299 Overall, fungicides were more profitable in the subtropical region, with break-even
 300 probabilities, $P(I \geq C)$, values higher than 0.99 for all fungicides (Fig. 4). In this region, the most
 301 profitable fungicide was MANC, with a mean profit of US\$269.73/ha. The least profitable
 302 fungicide in the subtropical region was PYRA+EPOX, with a mean profit of US\$118.17/ha. In
 303 the tropical region, break-even probabilities of fungicides were much lower than those obtained
 304 in the subtropics. The $P(I \geq C)$ values ranged from 0.17 (PYRA+EPOX) to 0.97 (MANC) (Fig.
 305 4). The most profitable fungicide was again MANC, with a mean profit of US\$95.00/ha and the
 306 least profitable was PYRA+EPOX, with a negative mean profit of -US\$17.66/ha.

307
 308 **Discussion**

309 This study provides an updated summary of the effects of different fungicides applied
 310 sequentially (three sprays starting at the heading stage) for managing wheat blast. For such, we
 311 gathered data from 44 uniform field trials conducted during nine growing seasons (2012 to 2020)
 312 across several wheat-producing states in Brazil. A previous study used a portion of the data used
 313 in this work; 17 cooperative trials conducted from 2012 to 2014 in Brazil) also with the goal of

314 comparing fungicide treatments (Cruz et al. 2019). The present study differs from the previous
315 by evaluating a larger set of fungicide treatments, testing the effect of year and region within
316 Brazil, and performing an economic analysis (Cruz et al. 2019). Results of our analysis generally
317 corroborate the findings of that study for the Brazilian trials, which also reported a similar
318 performance among the QoI+DMI premixes and a protectant fungicide. Similarly, a recent single
319 field experiment (2019/20 season) conducted in Bangladesh reported a relatively high efficacy
320 (65%) for MANC, which was close to our upper limit (95% confidence interval) estimate (Roy
321 et al. 2020). The grain yield response from using MANC in the Bangladeshi study (744 kg/ha)
322 was within the expected gain (close to the upper limit) of estimated trials conducted in the
323 Subtropical region of Brazil. Among several differences in experimental conditions, it is worth
324 noting the difference in the concentration of MANC that was a bit higher (800 g/kg) in that study
325 compared with the recommended dose used in the Brazilian experiments (750 g/kg), which may
326 explain the higher levels of efficacy and yield response.

327 Commercial premixes of QoI+DMI have been tested more extensively than MANC in
328 independent research. For instance, in the study conducted by Cruz et al. (2019), the authors
329 reported a relatively high control efficacy (58 to 68%) for picoxystrobin + cyproconazole,
330 trifloxystrobin + tebuconazole, azoxystrobin + cyproconazole and pyraclostrobin +
331 epoxiconazole applied twice across six field trials conducted in Bolivia from 2014 to 2015.
332 Average yield responses obtained from applying those premixes in that study were extremely
333 high, in the magnitude of 1,834 kg/ha (Cruz et al. 2019).

334 In Brazil, contrary to our findings, replicated field studies have reported higher levels of
335 efficacy of PYRA+EPOX - ranging from 60% (Pagani et al. 2014) to 85% (Rios et al. 2016),
336 compared with our estimates (95% CI 31 to 52%) regardless of the region. Overall, we found
337 that this commercial premix performed the poorest among all treatments. Nevertheless, improved
338 efficacy similar to those obtained in Bolivia, using PYRA + EPOX, can be expected especially in
339 the southern region of Brazil, but with a high level of uncertainty (95% CI 17 to 74%).

340 Tebuconazole is an affordable option widely used by Brazilian growers not only for
341 controlling wheat blast, but also for managing other important wheat diseases such as Fusarium
342 head blight disease (Machado et al. 2017; Duffeck et al. 2020; Barro et al. 2020). The mean
343 estimates of TEBU applied solo (54%) as well as the premix TFLX + TEBU (52%) reported in
344 our meta-analysis were very similar to a two-year study (TEBU = 57%; TFLX + TEBU = 50%)
345 conducted in Midwest of Brazil during 2010 and 2011 crop seasons (Pagani et al. 2014).
346 Moreover, the yield responses from using the TEBU based fungicides reported in that study

347 (~400 kg/ha) (Pagani et al. 2014) were within the expected range, mainly for trials conducted in
348 the Subtropics where yield response was greater than in the Tropical region.

349 In general, the levels of control were superior and, on average, 18 percent points greater
350 in the Subtropical region (54 to 66%) compared with the Tropical region (24 to 47%). The only
351 exception was tebuconazole fungicide for which efficacy was not influenced by region. Our
352 findings demonstrated a similar levels of disease control reported in single studies conducted in
353 the tropics (60%) or Subtropics (85%) (Pagani et al. 2014; Rios et al. 2016).

354 Results of our profitability analysis using the means and respective uncertainty of the
355 estimates of yield return showed that, regardless of the region, the most profitable fungicide was
356 MANC, given its lower price, and similar efficacy and yield response compared with the
357 premixes. Although mancozeb was introduced in 1962, it is still important in the fungicide
358 market worldwide and known to be a cost-effective fungicide (Gullino et al. 2010; Thind and
359 Hollomon 2018). In fact, the probabilities of breaking even on costs of the commercial premixes
360 of fungicides were generally lower, especially in the Tropical region, for all premixes (which are
361 most costly) than MANC and TEBU, for which high break-even probabilities (> 92%) are
362 expected.

363 It is worth mentioning that there are two different wheat production systems in the tropics of
364 Brazil. The first is the irrigated and high-yielding system and where the blast is not a big concern
365 and the non-irrigated under which the trials were established. In the latter case, sowing dates
366 range from February to May (end of summer to begin of autumn) when the weather conditions
367 are favorable for the disease. The combination of less susceptible cultivars and fungicide
368 protection has been explored to improve disease management. For instance, Rios et al. (2016)
369 reported the effect of cultivar when using PYRA + EPOX with greatest control levels using a
370 cultivar that was considered less susceptible.

371 The use of premixes of single-site amended with multi-site fungicides has been tested more
372 recently for wheat blast control. Preliminary data from the uniform fungicide trials (Santana et
373 al. 2019b, 2019a, 2020a, 2020b) have shown grain yield benefits from adding a multi-site
374 fungicide (mancozeb) in the mixture and more data will become available in the near future to
375 confirm this observation. Additionally, the use of multi-site fungicides is important for managing
376 fungicide resistance (FRAC-BR 2021). In fact, less sensitive PoT populations to QoIs and DMIs
377 in Brazil have been reported, associated with mutations in cytochrome b gene (mainly G143A
378 substitution) (Castroagudín et al. 2015) or *CYP51* gene (several mutation points) (Dorigan et al.
379 2019; Poloni et al. 2021). However, using a relatively long time series we did not find evidence
380 of a decline in fungicide efficacy over the years for all commercial premixes amended with QoI

381 as well as TEBU applied solo. Whether QoIs are less effective or losing efficacy over the years
382 could not be inferred given that none of the fungicides had QoI as a sole active ingredient. If that
383 happens to be true, and confirmed by field research, it is possible that the DMI component in the
384 premix is responsible for the disease reduction. Further research in this area will be important to
385 contribute to the debate around the risk associated with the use of strobilurins for wheat blast
386 control (Castroagudín et al. 2015; Oliveira et al. 2015; Poloni et al. 2021).

387 In conclusion, the definition of the best options in fungicide programs for managing wheat
388 blast should take into account region-specific factors that affect the performance of fungicides
389 and also the need to extend control for other wheat diseases, a case where QoI + DMI premixes
390 have found use not only in Brazil but elsewhere (Blandino et al. 2006; Willyerd et al. 2012;
391 Barro et al. 2017; Paul et al. 2018b). Management tactics such as application of site-specific
392 fungicides amended with multi-site fungicides programs; use of locally-adapted wheat cultivars
393 carrying resistance genes against blast; and shifts in sowing time to escape conducive blast
394 weather at heading stage, especially in the tropics, should be considered in an integrated
395 management strategy against wheat blast. Overall, this work confirms the profitability of some
396 site-specific and a multi-site fungicide, report their efficacy, and yield return by controlling
397 wheat blast in both high disease-conducive region (tropical) and moderately disease-conducive
398 region (subtropical) to blast occurrence, which may be useful for decision-making when defining
399 fungicide programs.

400

401 **Acknowledgements**

402 The first and senior author acknowledges the financial support provided by the Conselho
403 Nacional de Desenvolvimento Científico e Tecnológico (CNPq/Brazil) for scholarship and
404 research fellowship (PQ-306857/2015-4), respectively. We also acknowledge the financial
405 support provided by the Fundação de Amparo à Pesquisa do Estado de Minas Gerais
406 (Fapemig/Brazil) for a research grant (APQ-03945-16). All other authors are thankful to their
407 institutions and teams for providing the support during the conduction of field experiments and
408 collection of the data.

409

410 **Data availability statement**

411 The data and R scripts that support the findings of this study are openly available in the Open
412 Science Framework project at osf.io/y7sgd/. A website was generated to better visualize the
413 scripts where all data and analyses are documented and reproducible (git.io/JGVCM).

414

415 Author's contribution

416 JPA and JPB contributed equally to this study. JPA, JPB and EMD conceived the idea,
417 analyzed the data and wrote the manuscript. KSA analyzed the data and wrote the manuscript.
418 FMS planned and coordinated the experiments; JMVP, JLN, DL, GAMT, CCS, CDSS, ACPG,
419 AABS, CAS, DFC, MAOC, TDNM, DRA, AAPC, LSOM, CMU, WV, and RCSG conducted
420 the field trials and shared the data. All authors provided feedback and approved the final
421 manuscript.

422

423 Conflict of interests

424 The authors declare that they have no conflict of interests.

425

426 Literature Cited

427 AGROFIT. 2021. Ministério da Agricultura, Pecuária e Abastecimento. Available at:
428 http://agrofit.agricultura.gov.br/agrofit_cons/principal_agrofit_cons [Accessed March 17,
429 2021].

430 AGROLINK. 2021. O Portal do conteúdo agropecuário. Available at:
431 <https://www.agrolink.com.br/> [Accessed March 19, 2021].

432 Barro, J. P., Forte, C. T., Trentin, D., Scariot, M., and Milanesi, P. M. 2017. Effectiveness of
433 different fungicide formulations and number of applications in controlling wheat leaf rust.
434 *Summa Phytopathol.* 43:276–280.

435 Barro, J. P., Meyer, M. C., Godoy, C. V., Dias, A. R., Utiamada, C. M., Jaccoud Filho, D. de S.,
436 Wruck, D. S. M., Borges, E. P., Siqueri, F., Juliatti, F., Campos, H. D., Junior, J. N., Carneiro,
437 L. C., Silva, L. H. C. P., Martins, M. C., Balardin, R. S., Zito, R. K., Furlan, S. H., Venancio,
438 W. S., and Del Ponte, E. M. 2019. Performance and profitability of fungicides for managing
439 soybean white mold: A 10-year summary of Cooperative Trials. *Plant Dis.* 103:2212–2220.

440 Barro, J., Santana, F. M., Machado, F. J., Duffeck, M. R., Lau, D., Sbalcheiro, C. C., Schipanski,
441 C. A., Chagas, D. F., Venancio, W. S., Dallagnol, L. J., Guterres, C. W., Kuhnem, P., Feksa,
442 H. R., and Del Ponte, E. M. 2020. Are DMI+QoI fungicide premixes during flowering
443 worthwhile for *Fusarium* head blight control in wheat? a meta-analysis. *Plant Dis.* Available
444 at: <https://apsjournals.apsnet.org/doi/abs/10.1094/PDIS-09-20-2096-RE> [Accessed April 23,
445 2021].

- 446 Blandino, M., Minelli, L., and Reyneri, A. 2006. Strategies for the chemical control of Fusarium
447 head blight: Effect on yield, alveographic parameters and deoxynivalenol contamination in
448 winter wheat grain. *Eur. J. Agron.* 25:193–201.
- 449 Cardoso, C. A. A., Reis, E. M., and Moreira, E. N. 2008. Development of a warning system for
450 wheat blast caused by *Pyricularia Grisea*. *Summa Phytopathol.* 34:216–21.
- 451 Castroagudín, V. L., Ceresini, P. C., de Oliveira, S. C., Reges, J. T. A., Maciel, J. L. N., Bonato,
452 A. L. V., Dorigan, A. F., and McDonald, B. A. 2015. Resistance to QoI fungicides is
453 widespread in Brazilian populations of the wheat blast pathogen *Magnaporthe oryzae*.
454 *Phytopathology* 105:284–294.
- 455 Ceresini, P. C., Castroagudín, V. L., Rodrigues, F. Á., Rios, J. A., Aucique-Pérez, C. E.,
456 Moreira, S. I., Croll, D., Alves, E., Carvalho, G., Maciel, J. L. M., and McDonald, B. A. 2019.
457 Wheat blast: from its origins in South America to its emergence as a global threat: Wheat
458 Blast. *Mol. Plant Pathol.* 20:155–172.
- 459 Ceresini, P. C., Castroagudín, V. L., Rodrigues, F. Á., Rios, J. A., Eduardo Aucique-Pérez, C.,
460 Moreira, S. I., Alves, E., Croll, D., and Maciel, J. L. N. 2018. Wheat Blast: Past, present, and
461 future. *Annu. Rev. Phytopathol.* 56:427–456.
- 462 Chakraborty, M., Mahmud, N. U., Gupta, D. R., Tareq, F. S., Shin, H. J., and Islam, T. 2020a.
463 Inhibitory effects of linear lipopeptides from a marine *Bacillus subtilis* on the wheat blast
464 fungus *Magnaporthe oryzae Triticum*. *Front. Microbiol.* 11:1–14.
- 465 Chakraborty, M., Mahmud, N. U., Muzahid, A. N. M., Rabby, S. M. F., and Islam, T. 2020b.
466 Oligomycins inhibit *Magnaporthe oryzae Triticum* and suppress wheat blast disease. *PLOS*
467 *ONE* 15:1–16.
- 468 Coelho, M. A. de O., Torres, G. A. M., Cecon, P. R., and Santana, F. M. 2016. Sowing date
469 reduces the incidence of wheat blast disease. *Pesqui. Agropecu. Bras.* 51:631–637.
- 470 Comissão Brasileira de Pesquisa de Trigo e Triticale. 2020. *Informações Técnicas para Trigo e*
471 *Triticale*. 13th ed. Passo Fundo, RS. Brasil: Biotrigo Genética.
- 472 Cruppe, G., Cruz, C. D., Peterson, G., Pedley, K., Asif, M., Fritz, A., Calderon, L., Silva, C. L.,
473 Todd, T., Kuhnem, P., Singh, P. K., Singh, R. P., Braun, H. J., Barma N. C. D., and Valent, B.
474 2020. Novel sources of wheat head blast resistance in modern breeding lines and wheat wild
475 relatives. *Plant Dis.* 104:35–43.

- 476 Cruz, C. D., Santana, F. M., Todd, T. C., Maciel, J. L. N., Kiyuna, J., Baldelomar, D. F., Cruz, C.
477 P., Lau, D., Seixas, C. S., Goulart, A. C. P., Sussel, A. A., Schipanski, C. A., Chargas, D. F.,
478 Coelho, M., Montecelli, T. D. N., Utiamada, C., Custódio, A. P., Rivadeneira, M. G., Bockus,
479 W., and Valent, B. 2019. Multi-environment assessment of fungicide performance for
480 managing wheat head blast (WHB) in Brazil and Bolivia. *Trop. Plant Pathol.* 44:183–191.
- 481 Cruz, C. D., and Valent, B. 2017. Wheat blast disease: Danger on the move. *Trop. Plant Pathol.*
482 42:210–222.
- 483 Cruz, M. F. A., Rios, J. A., Araujo, L., and Ávila Rodrigues, F. 2016. Infection process of
484 *Pyricularia oryzae* on the leaves of wheat seedlings. *Trop. Plant Pathol.* 41:123–127.
- 485 Dalla Lana, F., Paul, P. A., Godoy, C. V., Utiamada, C. M., da Silva, L. H. C. P., Siqueri, F. V.,
486 Forceline, C. A., Jaccound-Filho, D. S., Miguel-Wruck, D. S., Borges, E. P., Juliatti, F. C.,
487 Campos, H. D., Nunes-Junior, J., Carneiro, L. C., Canteri, M. C., Ito, M. F., Meyer, M. C.,
488 Martins, M. C., Balardin, R. S., Furlan, S. H., Carlin, V. J., and Del Ponte, E. M. 2018. Meta-
489 analytic modeling of the decline in performance of fungicides for managing soybean rust after
490 a decade of use in Brazil. *Plant Dis.* 102:807–817.
- 491 Dorigan, A. F., Carvalho, G. D., Poloni, N. M., Negrisoni, M. M., Maciel, J. L. N., and Ceresini,
492 P. C. 2019. Resistance to triazole fungicides in *Pyricularia* species associated with invasive
493 plants from wheat fields in Brazil. *Acta Sci. Agron.* 41:1–10.
- 494 Duffeck, M. R., Alves, K. S., Machado, F. J., Esker, P. D., and Del Ponte, E. M. 2020. Modeling
495 yield losses and fungicide profitability for managing Fusarium head blight in Brazilian spring
496 wheat. *Phytopathology* 110:370–378.
- 497 FRAC-BR. 2021. Comitê de Ação a Resistência a Fungicidas. Frac-Br. Available at:
498 <https://www.frac-br.org> [Accessed May 31, 2021].
- 499 Goulart, A. C. P., and Paiva, A. 1993. Evaluation of fungicides for control of wheat (*Triticum*
500 *aestivum* L.) blast (*Pyricularia grisea*), 1991. In *Annual Wheat Newsletter*, Fort Collins:
501 Department of Agronomy, Colorado State University.
- 502 Goulart, A. C. P., and Paiva, F. de A. 2000. *Avaliação de Perdas no Rendimento de Grãos de*
503 *Trigo Causadas por Pyricularia grisea, no Período de 1988 a 1992, em Mato Grosso do Sul.*
504 7th ed. Dourados/MS: Embrapa.
- 505 Goulart, A. C. P., Paiva, F., and Mesquita, A. N. 1990. Occurrence and losses caused by wheat

- 506 (*Triticum aestivum* L.) blast (*Pyricularia oryzae* Cav.) in the state of Mato Grosso do Sul, in
507 1988. In *Annual Wheat Newsletter*, Fort Collins: Department of Agronomy, Colorado State
508 University.
- 509 Gullino, M. L., Tinivella, F., Garibaldi, A., Kemmitt, G. M., Bacci, L., and Sheppard, B. 2010.
510 Mancozeb: Past, present, and future. *Plant Dis.* 94:1076–1087.
- 511 Higgins, J. P. T., Jackson, D., Barrett, J. K., Lu, G., Ades, A. E., and White, I. R. 2012.
512 Consistency and inconsistency in network meta-analysis: Concepts and models for multi-arm
513 studies. *Res. Synth. Methods* 3:98–110.
- 514 Igarashi, S., Utiamada, C. M., Igarashi, L. C., Kazuma, A. H., and Lopes, R. 1986. Occurrence
515 of *Pyricularia* sp. in wheat (*Triticum aestivum* L.) in the State of Parana, Brazil. *Fitopatol.*
516 *Bras.* 11:351–352.
- 517 Islam, M. T., Kim, K.-H., and Choi, J. 2019. Wheat Blast in Bangladesh: The current situation
518 and future impacts. *Plant Pathol. J.* 35:1–10.
- 519 Machado, F. J., Santana, F. M., Lau, D., and Del Ponte, E. M. 2017. Quantitative review of the
520 effects of triazole and benzimidazole fungicides on *Fusarium* head blight and wheat yield in
521 Brazil. *Plant Dis.* 101:1633–1641.
- 522 Maciel, J. L. N., Danelli, A. L. D., Boaretto, C., and Forcelini, C. A. 2013. Diagrammatic scale
523 for the assessment of blast on wheat spikes. *Summa Phytopathol.* 39:162–166.
- 524 Madden, L. V., Piepho, H.-P., and Paul, P. A. 2016. Statistical models and methods for network
525 meta-analysis. *Phytopathology* 106:792–806.
- 526 Malaker, P. K., Barma, N. C. D., Tiwari, T. P., Collis, W. J., Duveiller, E., Singh, P. K., Joshi, A.
527 K., Singh, R. P., Braun, H. J., Peterson, G. L., Pedley, K. F., Farman, M. L., and Valent, B.
528 2016. First report of wheat blast caused by *Magnaporthe oryzae* pathotype *Triticum* in
529 Bangladesh. *Plant Dis.* 100:2330.
- 530 Oliveira, S. C., Castroagudín, V. L., Maciel, J. L. N., Pereira, D. A. dos S., and Ceresini, P. C.
531 2015. Resistência cruzada aos fungicidas QoI azoxistrobina e piraclostrobina no patógeno da
532 brusone do trigo *Pyricularia oryzae* no Brasil. *Summa Phytopathol.* 41:298–304.
- 533 Pagani, A. P. S., Dianese, A. C., and Café-Filho, A. C. 2014. Management of wheat blast with
534 synthetic fungicides, partial resistance and silicate and phosphate minerals. *Phytoparasitica*
535 42:609–617.

- 536 Paul, P. A., Bradley, C. A., Madden, L. V., Dalla Lana, F., Bergstrom, G. C., Dill-Macky, R.,
537 Wise, K. A., Esker P. D., McMullen, M., Grybauskas, A., Kirk, W. W., Milus, E., and Ruden,
538 K. 2018a. Effects of pre- and post anthesis applications of demethylation inhibitor fungicides
539 on Fusarium head blight and deoxynivalenol in spring and winter wheat. *Plant Dis.* 102:2500–
540 2510.
- 541 Paul, P. A., Bradley, C. A., Madden, L. V., Lana, F. D., Bergstrom, G. C., Dill-Macky, R., Esker
542 P. D., Wise, K. A., McMullen, M., Grybauskas, A., Kirk, W. W., and Ruden, K. 2018b. Meta-
543 analysis of the effects of QoI and DMI fungicide combinations on Fusarium head blight and
544 deoxynivalenol in wheat. *Plant Dis.* 102:2602–2615.
- 545 Paul, P. A., Lipps, P. E., Hershman, D. E., McMullen, M. P., Draper, M. A., and Madden, L. V.
546 2008. Efficacy of triazole-based fungicides for Fusarium head blight and deoxynivalenol
547 control in wheat: A multivariate meta-analysis. *Phytopathology* 98:999–1011.
- 548 Paul, P. A., McMullen, M. P., Hershman, D. E., and Madden, L. V. 2010. Meta-analysis of the
549 effects of triazole-based fungicides on wheat yield and test weight as influenced by Fusarium
550 head blight intensity. *Phytopathology* 100:160–171.
- 551 Perelló, A. E., Martinez, I., Sanabria, A., Altamirano, R., and Sibole, J. V. 2017. Pathogenicity
552 of isolates of *Magnaporthe* spp. from wheat and grasses infecting seedlings and mature wheat
553 plants in Argentina. *Plant Pathol.* 66:1149–1161.
- 554 Piepho, H. P. 2014. Network-meta analysis made easy: Detection of inconsistency using factorial
555 analysis-of-variance models. *BMC Med. Res. Methodol.* 14 Available at:
556 <https://bmcmmedresmethodol.biomedcentral.com/articles/10.1186/1471-2288-14-61> [Accessed
557 March 25, 2020].
- 558 Poloni, N. M., Carvalho, G., Vicentini, S. N. C., Dorigan, A. F., Maciel, J. L. N., McDonald, B.
559 A., Moreira, S. I., Hawkins, N., Fraaije, B. A., Kelly, D. E., Kelly, S. L., and Ceresini, P.C.
560 2021. Widespread distribution of resistance to triazole fungicides in Brazilian populations of
561 the wheat blast pathogen. *Plant Pathol.* 70:436–448.
- 562 R Core Team. 2021. *R: A Language and Environment for Statistical Computing*. Vienna,
563 Austria: R Foundation for Statistical Computing. Available at: <https://www.R-project.org/>.
- 564 Rios, J. A., Rios, V. S., Paul, P. A., Souza, M. A., Araujo, L., and Rodrigues, F. A. 2016.
565 Fungicide and cultivar effects on the development and temporal progress of wheat blast under

- 566 field conditions. *Crop Prot.* 89:152–160.
- 567 Roy, K. K., Anwar, M. B., Mustarin, K.-E., Reza, M. M. A., Muzahid-E-Rahman, M., Malaker,
568 P. K., Barma, N. C. D., and Singh, P. K. 2020. Evaluation of different fungicides (chemical,
569 botanical and bio-agent) in controlling wheat blast in a blast prone area in Bangladesh. *Arch.*
570 *Phytopathol. Plant Prot.* 1–9.
- 571 Santana, F. M., Lau, D., Sbalcheiro, C. C., Aguilera, J. G., Goulart, A. C. P., Sussel, A. A. B.,
572 Schipanski, C. A., Coelho, M. A. O., Utiamada, C. M., Montecelli, T. D. N., Seixas, C. D. S.,
573 and Custódio, A. A. P. 2016a. *Eficiência de fungicidas para o controle da brusone do trigo:*
574 *resultados dos ensaios cooperativos – safra 2013.* Passo Fundo, RS. Brasil: Embrapa Trigo.
- 575 Santana, F. M., Lau, D., Sbalcheiro, C. C., Aguilera, J. G., Goulart, A. C. P., Sussel, A. A. B.,
576 Schipanski, C. A., Coelho, M. A. O., Utiamada, C. M., Montecelli, T. D. N., Seixas, C. D. S.,
577 Custódio, A. A. P., and Venâncio, W. S. 2016b. *Eficiência de fungicidas para o controle da*
578 *brusone do trigo: resultados dos ensaios cooperativos – safra 2014.* Passo Fundo, RS. Brasil:
579 Embrapa Trigo.
- 580 Santana, F. M., Lau, D., Sbalcheiro, C. C., Goulart, A. C. P., Custódio, A. A. P., Venâncio, W.
581 S., Goussain, R. C. S., Amaral, D. R. A., Seixas, C. D. S., and Venancio, J. F. 2016c.
582 *Eficiência de fungicidas para controle de brusone de trigo: resultados dos ensaios*
583 *cooperativos – safra 2015.* Passo Fundo, RS. Brasil: Embrapa Trigo.
- 584 Santana, F. M., Lau, D., Sbalcheiro, C. C., Goussain, R. C. S., Venancio, W. S., Custódio, A. A.
585 P., Moreira, L. S. O., and Sussel A. A. B. 2020a. *Eficiência de fungicidas para controle de*
586 *brusone de trigo: resultados dos ensaios cooperativos, safra 2018.* Passo Fundo, RS. Brasil:
587 Embrapa Trigo.
- 588 Santana, F. M., Lau, D., Sbalcheiro, C. C., Sussel, A. A. B., Goussain, R. C. S., Venancio, W. S.,
589 Custódio, A. A. P., and Moreira, L. S. O. 2019a. *Eficiência de fungicidas para controle de*
590 *brusone de trigo: resultados dos ensaios Cooperativos - safra 2017.* Passo Fundo, RS. Brasil:
591 Embrapa Trigo.
- 592 Santana, F. M., Lau, D., Sbalcheiro, C. C., Sussel, A. A. B., Seixas, C. D. S., Venancio, W. S.,
593 and Nicolau, M. 2019b. *Eficiência de fungicidas para controle da brusone de trigo:*
594 *resultados dos ensaios cooperativos, safra 2016.* Passo Fundo, RS. Brasil: Embrapa Trigo.
- 595 Santana, F. M., Lau, D., Sbalcheiro, C. C., Sussel, A. A. B., Venancio, W. S., Schipanski, C. A.,

- 596 and Chagas, D. F. 2020b. *Eficiência de fungicidas para controle de brusone de trigo:*
597 *resultados dos ensaios cooperativos, safra 2019*. Passo Fundo, RS. Brasil: Embrapa Trigo.
- 598 Santana, F. M., Maciel, J. N., Lau, D., Cargnin, A., Seixas, C. D. S., Bassoi, M. C., Goulart, A.
599 C. P., Sussel, A. A. B., Schipanski, C. A., Montecelli, T. D. N., Chargas, J. H., and Guizeline,
600 J. 2013. *Eficiência de fungicidas para o controle da brusone do trigo: resultados dos ensaios*
601 *cooperativos - safra 2011*. Passo Fundo, RS. Brasil: Embrapa Trigo.
- 602 Santana, F. M., Maciel, J. N., Lau, D., Torres, G. A. M., Cargnin, A., Seixas, C. D. S., Goulart,
603 A. C. P., Sussel, A. A. B., Schipanski, C. A., Montecelli, Custódio, A. A. P., and Utiamada,
604 C. M. 2014. *Eficiência de fungicidas para o controle da brusone do trigo: resultados dos*
605 *ensaios cooperativos - safra 2012*. Passo Fundo, RS. Brasil: Embrapa Trigo.
- 606 Silva, S. R., Custódio, A. A. P., FOLONI, J. S. S., Betioli-Junior, E., and Bassoi, M. C. 2019.
607 Nitrogen fertilization effects on wheat blast epidemics under varying field environmental
608 conditions. *Trop. Plant Pathol.* 44:258–67.
- 609 Silva, B. N., Oliveira, L. M., Mochko, A. C. R., Chaves, J. A. A., Aucique-Pérez, C. E., and
610 Rodrigues, F. A. 2021. Physiological and biochemical changes in wheat plants infected by
611 *Pyricularia Oryzae* caused by thermal oscillations. *Physiol. Mol. Plant. Pathol.* 115:1-12.
- 612 Tembo, B., Mulenga, R. M., Sichilima, S., M'siska, K. K., Mwale, M., Chikoti, P. C., Singh,
613 P.K., He, X., Pedley, K. F., Peterson, G. L., Singh, R. P., and Braun, H. J. 2020. Detection
614 and characterization of fungus (*Magnaporthe oryzae* pathotype *Triticum*) causing wheat blast
615 disease on rain-fed grown wheat (*Triticum aestivum* L.) in Zambia. *PLOS ONE.* 15:1-10.
- 616 Thind, T. S., and Hollomon, D. W. 2018. Thiocarbamate fungicides: reliable tools in resistance
617 management and future outlook: Thiocarbamate fungicides. *Pest Manage. Sci.* 74:1547–1551.
- 618 Tosa, Y., and Chuma, I. 2014. Classification and parasitic specialization of blast fungi. *J. Gen.*
619 *Plant Pathol.* 80:202–209.
- 620 Uddin, W., Serlemitsos, K., and Viji, G. 2003. A temperature and leaf wetness duration-based
621 model for prediction of gray leaf spot of perennial ryegrass turf. *Phytopathology* 93:336–43.
- 622 Urashima, A. S., Alves, A. F., Silva, F. N., Oliveira, D., and Gazaffi, R. 2017. Host range,
623 mating type and population structure of *Magnaporthe* sp. of a single barley field in São Paulo
624 state, Brazil. *J. Phytopathol.* 165:414–424.
- 625 Urashima, A. S., Leite, S. F., and Galbieri, R. 2007. Eficiência da disseminação aérea em

- 626 *Pyricularia grisea*. Summa Phytopathol. 33:275–279.
- 627 Viechtbauer, W. 2010. Conducting meta-analyses in R with the metafor Package. J. Stat. Softw.
628 36:1–48.
- 629 Willyerd, K. T., Li, C., Madden, L. V., Bradley, C. A., Bergstrom, G. C., Sweets, L. E.,
630 McMullen, M., Ransom, J. K., Grybauskas, A., Osborne, L., Wegulo, S. N., Hershman, D. E.,
631 Bockus, W. W., Groth, D., Dill-Macky, R., Milus, E., Esker, P. D., Waxman, K. D., Adey, E.
632 A., Ebelhar, S. A., Young, B. G., and Paul, P. A. 2012. Efficacy and stability of integrating
633 fungicide and cultivar resistance to manage Fusarium head blight and deoxynivalenol in
634 wheat. Plant Dis. 96:957–967.
- 635 Xavier Filha, M. S., Rodrigues, F. A., Domiciano, G. P., Oliveira, H. V., Silveira, P. R., and
636 Moreira, W. R. 2011. Wheat resistance to leaf blast mediated by silicon. Austral. Plant Pathol.
637 40:28–38.
- 638 Zadoks, J. C., Chang, T. T., and Konzak, C. F. 1974. A decimal code for the growth stages of
639 cereals. Weed Res. 14:415–421.

640 **Table 1.** Fungicide treatments evaluated for controlling wheat blast in 44 independent field trials
 641 conducted across six Brazilian states (PR, SP, DF, MT, MS, and MG) from 2012 to 2020

Fungicide a.i.^a	Chemical group^b	Brand name	N° trials	Dosage (mL or g/ha)	Cost^d (US\$/ha)
AZOX+TEBU	QoI+DMI	Azimut	28	750	73
MANC	DTC	Unizeb Gold	41	3,000	50
PYRA+EPOX	QoI+DMI	Opera	28	500	45
TEBU	DMI	Tebuco Nortox	19	500	52
TFLX+PROT	QoI+DMI	Fox	44	500	82
TFLX+TEBU	QoI+DMI	Nativo ^c	44	750	75

642 ^a a.i. (active ingredient); AZOX + TEBU = azoxystrobin + tebuconazole; MANC = mancozeb; PYRA + EPOX =
 643 pyraclostrobin + epoxiconazole; TEBU = tebuconazole; TFLX + PROT = trifloxystrobin + prothioconazole; TFLX
 644 + TEBU = trifloxystrobin + tebuconazole.

645 ^b QoI = Quinone-oxidase inhibitors; DMI = Sterol demethylation inhibitor; DTC = Dithiocarbamate.

646 ^c Included in all trials as positive control to wheat blast.

647 ^d Overall costs (US\$/ha) considering commercial prices of the 2019/20 crop season and three applications
 648 (operational cost for each application used was US\$10.00/ha).

649

650

651 **Table 2.** Overall means of Wheat Blast control efficacy (\bar{C}) and wheat yield response (\bar{D}) for each
 652 fungicide treatment, relative to the untreated check, not conditioned (Overall) and conditioned
 653 (moderator analysis) to two climatic regions (Tropical [DF, MT, MS, MG] and Subtropical [PR,
 654 SP]), conducted during nine years (2012-2020) across six Brazilian states

Fungicide ^a	Region	Control efficacy (%)					Yield return (Kg/ha)				
		k ^b	\bar{C}	CI _L ^c	CI _U ^c	P-value ^d	k ^b	\bar{D}	CI _L ^c	CI _U ^c	P-value ^d
MANC	Overall	33	58.0	49.8	64.8		35	420.1	315.6	524.6	
	Tropical	13	42.1	26.1	54.7		14	241.3	94.7	387.9	
	Subtropical	20	66.5	40.6	81.1	0.0011	21	532.1	195.3	868.9	0.0027
TFLX + PROT	Overall	39	53.9	44.6	61.6		42	299.7	221.9	377.5	
	Tropical	15	40.8	22.9	54.5		17	149.3	44.7	254.0	
	Subtropical	24	59.9	26.4	78.2	0.0262	25	396.5	154.5	638.4	0.0004
TEBU	Overall	18	53.6	43.2	62.1		19	319.5	221.6	417.3	
	Tropical	8	47.2	28.2	61.1		9	209.0	52.7	365.3	
	Subtropical	10	56.9	13.3	78.6	0.3076	10	351.1	-14.6	716.8	0.1836
AZOX + TEBU	Overall	18	54.8	43.5	63.9		19	301.5	215.7	387.2	
	Tropical	7	47.1	26.2	62.1		8	157.0	52.7	261.3	
	Subtropical	11	58.4	10.9	80.6	0.2704	11	410.3	162.2	658.4	0.0006
TFLX + TEBU	Overall	39	52.2	43.5	59.6		42	245.3	172.9	317.8	
	Tropical	15	42.4	26.1	55.2		17	123.9	25.7	222.1	
	Subtropical	24	57.4	24.3	76.0	0.0685	25	323.4	94.6	552.2	0.0028
PYRA + EPOX	Overall	19	43.2	31.8	52.8		22	181.1	114.8	247.5	
	Tropical	8	24.2	2.81	40.9		10	29.1	-49.8	108.1	
	Subtropical	11	54.3	17.5	74.7	0.0037	12	255.0	65.4	444.6	<0.0001

655 ^a See Table 1 for complete information on the fungicides.

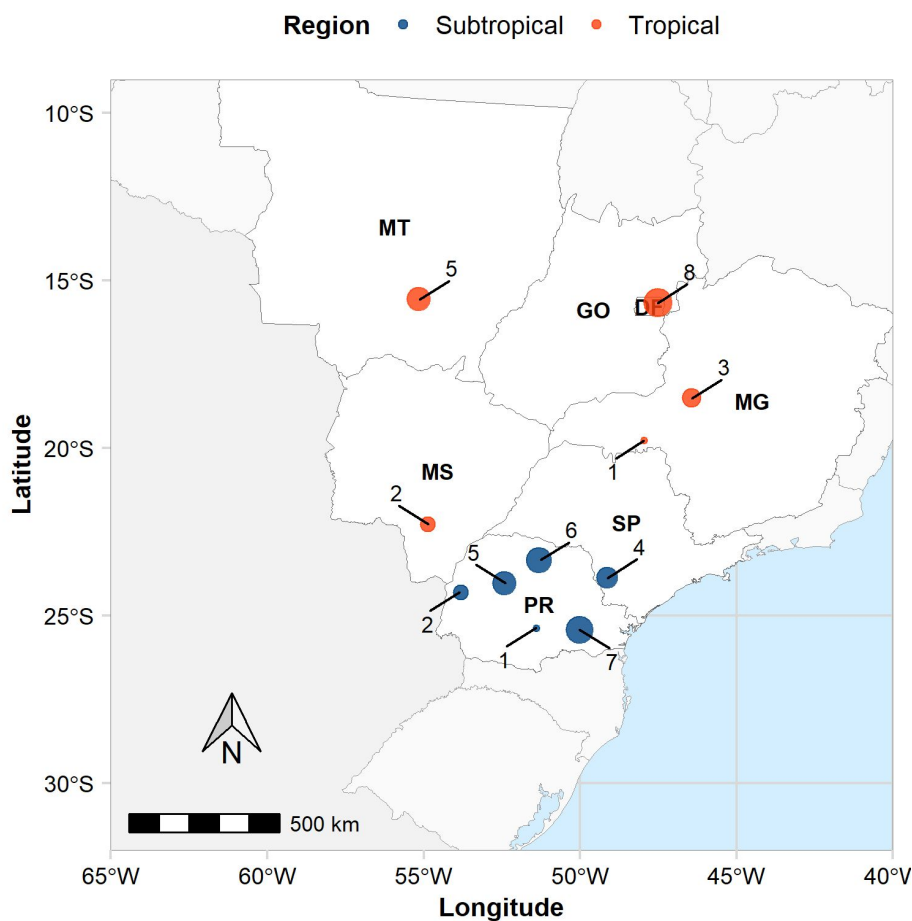
656 ^b number of trials that each fungicide was evaluated.

657 ^c upper (CI_U) and lower (CI_L) limits of the 95% confidence interval around \bar{C} and \bar{D} .

658 ^d probability value (significance level) for the effect of fungicide on disease reduction and yield response (at the selected
 659 climatic regions).

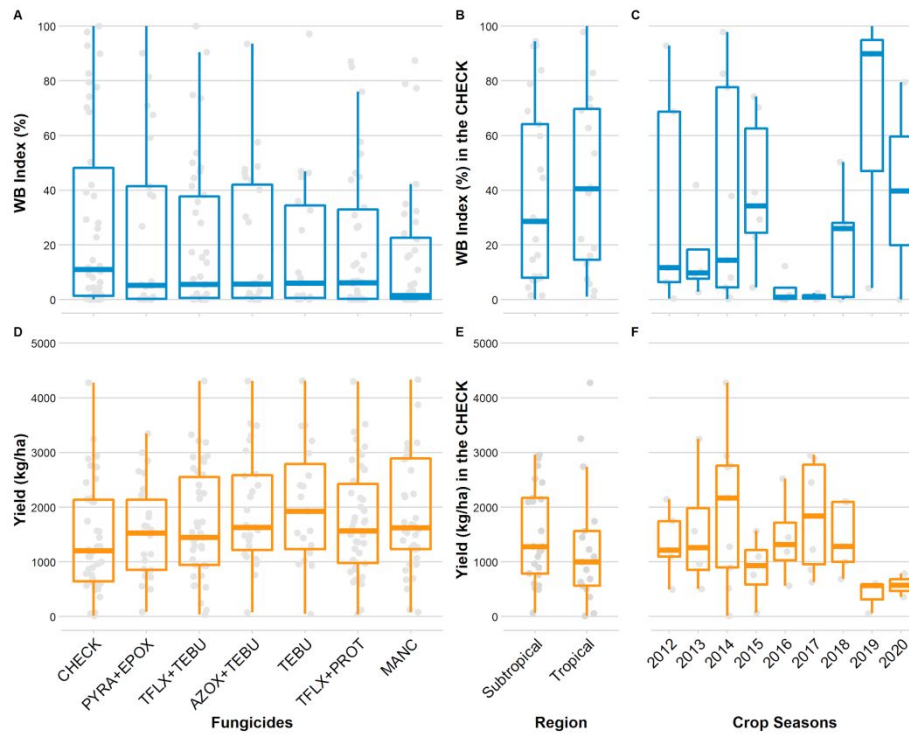
660

661

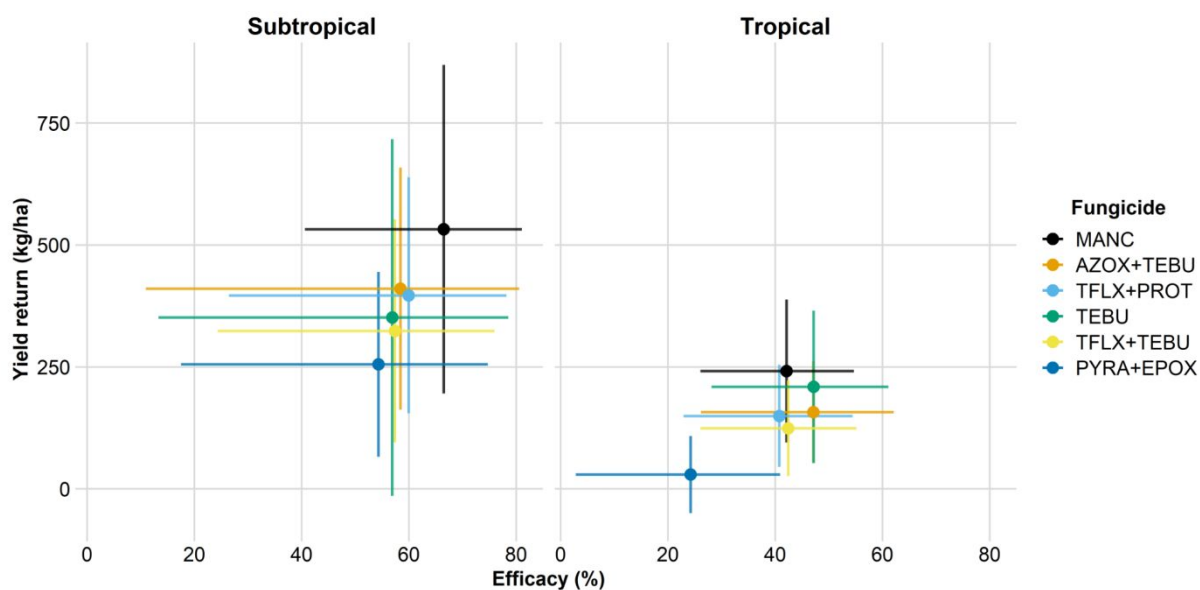


662
 663 **Fig. 1.** Geolocation of eleven municipalities across six Brazilian states where 44 fungicide trials
 664 were conducted from 2012 to 2020 (Campo Mourão - PR, Guarapuava - PR, Campo Verde -
 665 MT, Dourados - MS, Itaberá - SP, Londrina - PR, Palmeira - PR, Patos de Minas -
 666 MG, Planaltina - DF, Uberaba - MG). Dots were colored by climatic region and the size of the
 667 circle is proportional to the number of trials conducted at each location.

668

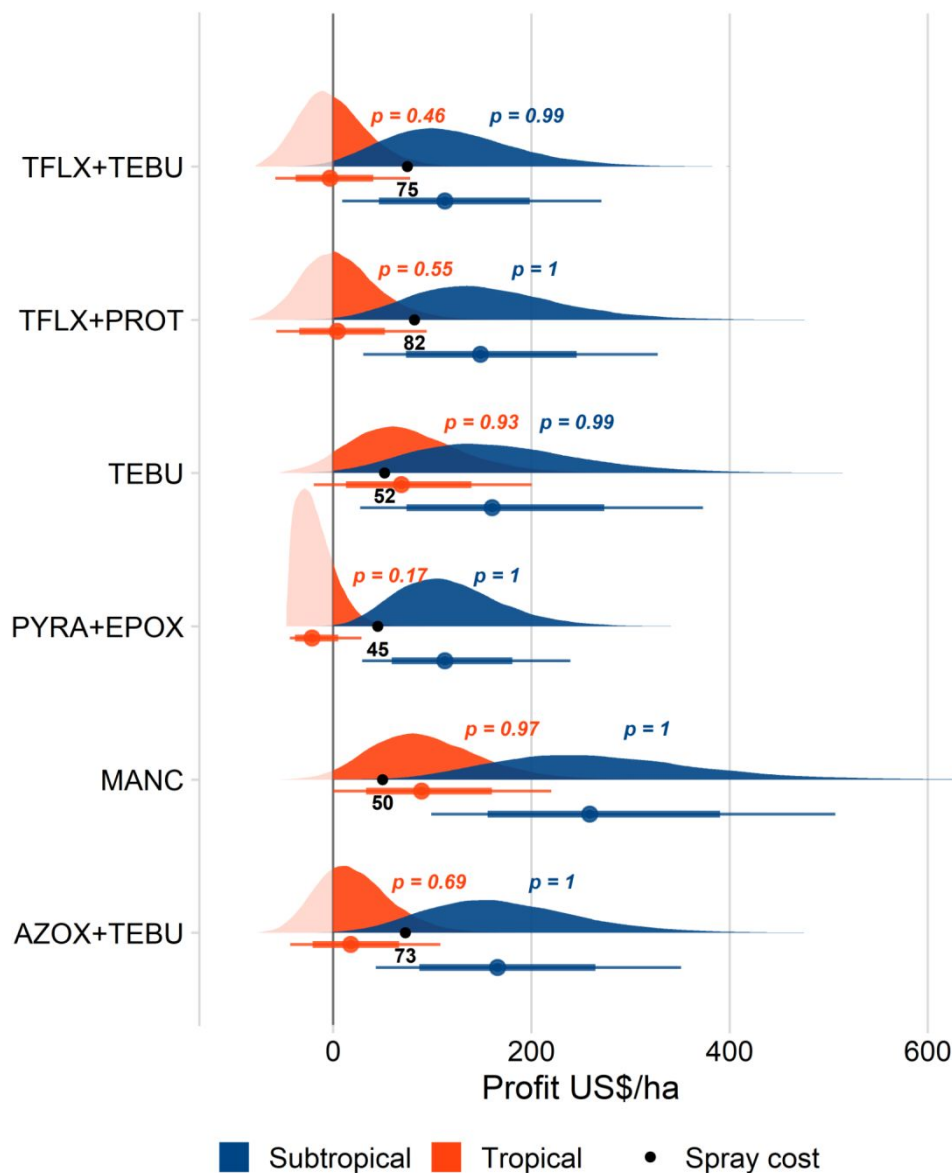


669
 670 **Fig. 2.** Box plots depicting the means of wheat blast index (%) and wheat grain yield (kg/ha)
 671 (across years and locations) of the untreated (CHECK) and fungicide-treated plots (A to D); and
 672 the means of the same variables in the untreated plots within-region (B to E) and within-year (C
 673 to F) measured from a set of 44 field trials conducted from 2012 to 2020. Climatic regions
 674 defined in this study were: Tropical (DF, MT, MS, MG) and Subtropical (PR, SP). The thick
 675 horizontal line inside the box represents the median, the limits of the box represent the lower and
 676 upper quartiles, and the circles represent the yearly means of each treatment. See Table 1 for
 677 information on the fungicide treatments.
 678



679
 680 **Fig. 3.** Relationship between fungicide efficacy and wheat grain yield relative to the untreated
 681 check, for six selected fungicide treatments evaluated during nine years (2012 to 2020) across 44
 682 field trials conducted across six Brazilian states (PR, SP, DF, MT, MS, and MG). Bars show the
 683 upper and lower limits of 95% confidence intervals around point estimates for both responses.
 684 See Table 1 for complete information on the evaluated fungicides.

685

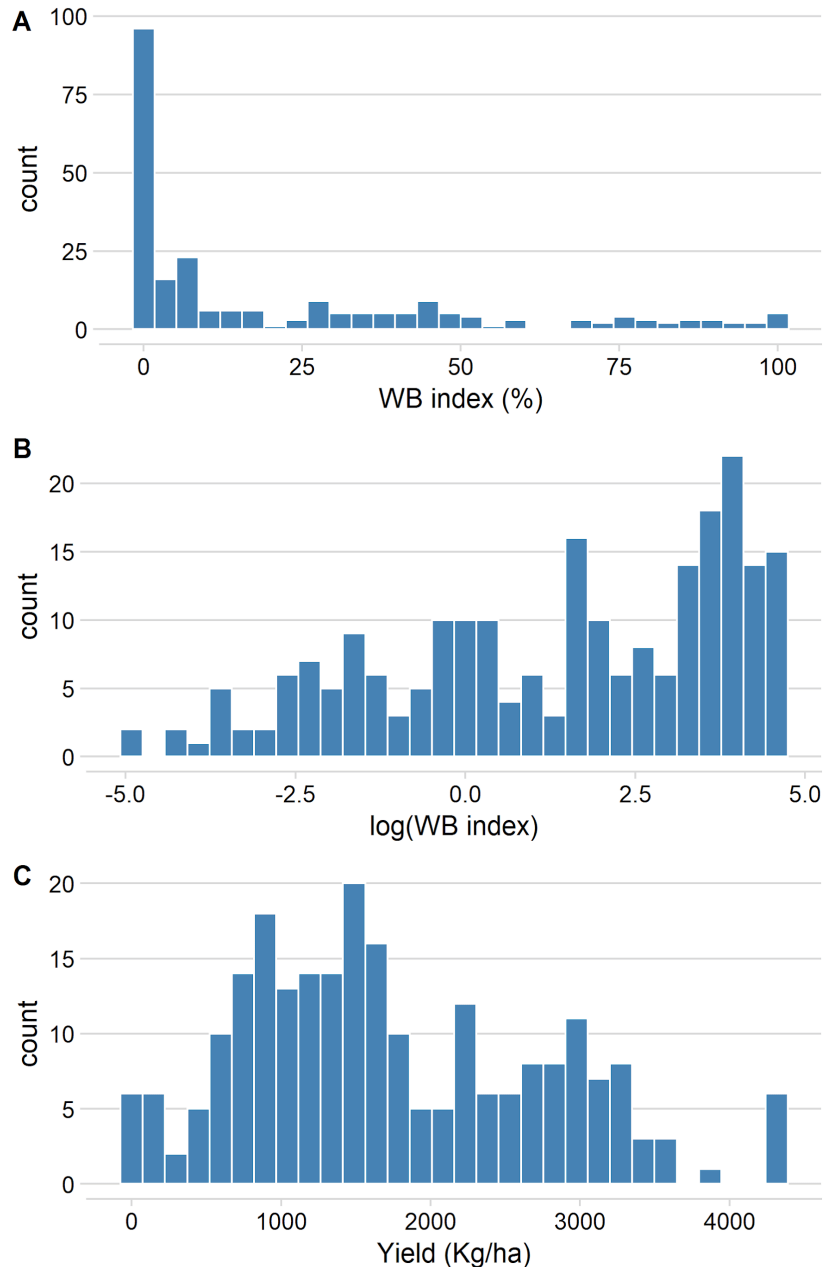


686
 687 **Fig. 4.** Half-eye plots (density and point intervals) of profits (50,000 simulation runs) based on
 688 the meta-analytic estimate of yield return (kg/ha) for six fungicide treatments conditioned of two
 689 climatic regions (Tropical and Subtropical) evaluated during nine crop-seasons (2012 to 2020).
 690 The thinner error bars depict the 2.5 and 97.5 percentile of the distribution, while the thicker
 691 error bars represent 25 and 75 percentiles, and the solid colored point gives the median profit for
 692 each fungicide and region. p gives the break-even probabilities, i.e, income greater than the cost
 693 of each fungicide in each respective region. The numbered black dots represent the spraying
 694 costs in US\$/ha of each fungicide.

1 **Sequential Post-Heading Applications for Controlling Wheat Blast: A Nine-Year**
 2 **Summary of Fungicide Performance in Brazil**

3 **João P. Ascari et al.**

4 **Supplemental Figure and Tables**



7 **Fig. S1:** Histograms for the distribution of Wheat blast index - WBI (**A**) and wheat grain yield
 8 (**C**) to check normality; **B**: log-transformed WBI data for normalizing the distribution and use in
 9 the meta-analysis models.

10

11

12 **Table S1.** Designs (set of fungicide treatments by each trial) identified in 44 independent trials
 13 conducted from 2012 to 2020 in 11 municipalities across six Brazilian states (PR, SP, DF, MT,
 14 MS and MG).

Design	Fungicides a.i. + untreated check ^a	WB index ^b	Yield ^b
1	CHECK; AZOX+TEBU; MANC; PYRA+EPOX; TEBU; TFLX+PROT; TFLX+TEBU	4	4
2	CHECK; AZOX+TEBU; PYRA+EPOX; TEBU; TFLX+PROT; TFLX+TEBU	5	5
3	CHECK; AZOX+TEBU; MANC; TEBU; TFLX+PROT; TFLX+TEBU	8	9
4	CHECK; AZOX+TEBU; MANC; TFLX+PROT; TFLX+TEBU	1	1
5	CHECK; MANC; PYRA+EPOX; TFLX+PROT; TFLX+TEBU	10	13
6	CHECK; MANC; TEBU; TFLX+PROT; TFLX+TEBU	1	1
7	CHECK; MANC;; TFLX+PROT; TFLX+TEBU	9	7
8	CHECK; TFLX+PROT; TFLX+TEBU	1	2

15 ^a See Table 1 for complete information about the treatments;

16 ^b Number of trials that each design of treatments was identified for both WB index and yield.

17

18

19 **Table S2.** Overall means and respective confidence intervals of log response ratio (\bar{L}_{IND}) and
 20 calculated percent control (\bar{C}) of Wheat Blast (WB) relative to untreated check provided by six
 21 fungicides evaluated during nine years (2012 to 2020) across 44 studies conducted in six Brazilian
 22 states (PR, SP, DF, MT, MS and MG).

Fungicide ^a	<i>k</i> ^b	Effect Size					WB Control (%)		
		\bar{L}_{IND}	SE(\bar{L})	CI_L^c	CI_U^c	<i>P value</i>	\bar{C}	CI_L^c	CI_U^c
MANC	33	-0.8677	0.0904	-1.0449	-0.6905	<0.0001	58.00	49.86	64.82
AZOX TEBU	+ 18	-0.7946	0.1144	-1.0188	-0.5704	<0.0001	54.82	43.46	63.89
TFLX+PROT	39	-0.7745	0.0938	-0.9583	-0.5907	<0.0001	53.90	44.60	61.64
TEBU	18	-0.7678	0.1035	-0.9706	-0.5650	<0.0001	53.59	43.16	62.11
TFLX+TEBU	39	-0.7395	0.0854	-0.9068	-0.5722	<0.0001	52.26	43.56	59.61
PYRA+EPOX	19	-0.5669	0.0939	-0.7509	-0.3829	<0.0001	43.27	31.81	52.80

23 ^a See Table 1 for complete information of the evaluated fungicides;

24 ^b number of trials that each fungicide was evaluated;

25 ^c upper (CI_U) and lower (CI_L) limits of the 95% confidence interval around \bar{L}_{IND} and \bar{C} .

26

27

28 **Table S3.** Overall means and respective confidence intervals of unstandardized difference in wheat
 29 grain yield (\bar{D}) between fungicide-treated and untreated plots, and percent yield increase (\bar{Y}) for six
 30 selected fungicide treatments evaluated during nine years (2012 to 2020) across 44 studies conducted
 31 in six Brazilian states (PR, SP, DF, MT, MS and MG).

Fungicide ^a	<i>k</i> ^b	Effect size					Yield Return (%)		
		\bar{D}	SE(\bar{D})	<i>CI</i> _L ^c	<i>CI</i> _U ^c	<i>P</i> value	\bar{Y}	<i>CI</i> _L ^c	<i>CI</i> _U ^c
MANC	35	420.10	53.30	315.62	524.57	<0.0001	47.55	32.25	64.62
TEBU	19	319.46	49.91	221.63	417.29	<0.0001	38.68	26.54	51.98
AZOX + TEBU	19	301.48	43.75	215.73	387.24	<0.0001	37.01	23.07	52.51
TFLX+PROT	42	299.73	39.69	221.92	377.53	<0.0001	32.42	21.84	43.93
TFLX+TEBU	42	245.34	36.98	172.85	317.83	<0.0001	29.08	19.13	39.86
PYRA+EPOX	22	181.15	33.85	114.79	247.50	<0.0001	23.76	14.62	33.64

32 ^a See Table 1 for complete information on the fungicides;

33 ^b number of trials that each fungicide was evaluated;

34 ^c upper (*CI*_U) and lower (*CI*_L) limits of the 95% confidence interval around \bar{D} and \bar{Y} .