






RESEARCH ARTICLE OPEN ACCESS

Fostering Green Legacy Initiative: Sustaining Seed Production for Scarce Indigenous Tree Species by Identifying, Characterizing, and Mapping of Mother Trees in Awi Zone, Northwestern Ethiopia

Mitku Alemu Megistu¹  | Jorge Manuel Revilla-Chávez²  | Bruno Marchatti de Souza³  | Maria Teresa Gomes Lopes⁴  | Ananda Virginia de Aguiar⁵ 

¹Plantation Research Program, Ethiopian Forestry Development, Addis Ababa, Ethiopia | ²Regional Directorate of Ucayali, Research Institute of the Peruvian Amazon-IIAP, Federico Basadre Highway Km 12400, Yarina Cocha, Ucayali, Peru | ³Yarinacocha Department of Animal Sciences, Instituto Federal Goiano, Rio Verde 75900-000, Goiano, Brazil | ⁴Avenida General Rodrigo Octavio Jordão Ramos, Universidade Federal do Amazonas, 1200, Coroado I, Manaus 69067-005, Amazonas, Brazil | ⁵Embrapa, Estrada da Ribeira, BR 476, Km111, Parque Monte Castelo, Colombo 83411-000, Paraná, Brazil

Correspondence: Mitku Alemu Megistu (mitkua@efd.gov.et)

Received: 16 October 2025 | **Revised:** 22 March 2026 | **Accepted:** 28 March 2026

Academic Editor: Poorani Gurumalles Prabu

Keywords: forest fragmentation | indigenous tree | isolation | tree seed

ABSTRACT

The aim of this study was to identify, characterize, and map mother trees of selected indigenous tree species to tackle shortage of high quality and quantity tree seed provision for massive plantation program by providing both temporal and spatial distribution of mother trees in the study area. This study identified 90 mother trees across seven indigenous tree species through stratified purposive sampling, treating each tree as an individual sampling plot to ensure localized data precision. Data on height, girth, and X- Y coordinates of each mother tree, as well as nearby trees within 10 m. Radius from selected mother trees were recorded. Descriptive statistics and coefficient of variance were calculated for the collected data. Following the statistical analysis, the spatial distribution of the mother tree was mapped using ArcGIS software. *Juniperus procera* in Banja District shows the largest mean both in terms of DBH (116.21 ± 37.3 cm) and height (33.82 ± 4.07 m) while *Podocarpus falcatus* in Guangua District score the second largest mean for DBH (94.83 ± 15.1 cm) and height (32.28 ± 14.3 m). *Prunus africana* in Banja District 2 were the third largest from the characterized seed sources by scoring average DBH (91.98 ± 19.71 cm) and height (29.16 ± 6.27 m). The coefficient of variance of selected mother trees both by species and by forest name also indicate the suitability of selected forest for the production of high quality and quantity of tree seed. Spatial mapping and local knowledge were combined to point out specific seed collection sites, such as Ziqe Forest, and to determine optimal collection times. This research provides a data-driven framework for developing targeted seed sourcing strategies that enhance the genetic resilience of restoration efforts, directly supporting Ethiopia's national and international reforestation and afforestation commitments.

This is an open access article under the terms of the [Creative Commons Attribution](https://creativecommons.org/licenses/by/4.0/) License, which permits use, distribution and reproduction in any medium, provided the original work is properly cited.

Copyright © 2026 Mitku Alemu Megistu et al. *International Journal of Forestry Research* published by John Wiley & Sons Ltd.

1 | Introduction

Production of quality tree seed is very crucial to achieve Ethiopia ambitious aim of restoring 15 million hectares of degraded land by 2030 which is aligned with the commitment to the Bonn challenge as well as billions of seedling produced every year by Green Legacy initiative (Ministry of Agriculture) [1].

Recently, the government of Ethiopia plan and implement huge restoration and afforestation program known as green legacy initiative [1]. The objective of green legacy campaign aligned with the international initiative on ecosystem restoration signed by the government of Ethiopia such as the Bonn challenge and the United Nation Decade ecosystem restoration [2]. Availability of high quality and sufficient quantity of tree seed is a vital component of restoration and reforestation; however, shortage of seeds of indigenous tree species remains critical bottleneck for the success of forest restoration effort [3]. The quality of tree seed mainly affected by the processes of seed collection, processing, and storage. Furthermore, the genetic quality of seed also impacted by its natural habitat, edaphic, and environmental condition; thus, proper documentation is vital for ensuring tree seed quality [4]. Tree seed can be sourced from either natural forest or plantation forest mostly single species. Collecting tree seeds from well-known and accurately documented sources not only improve seed germination but also play a critical role in stabilizing restored ecosystem by increasing the survival of planted seedlings.

Even if huge seedling production require sufficient and efficient seed provision, the seed system is unable to provide the required quantity and quality of tree seed, especially in the Amhara region [5]. Limited research was conducted especially in quantifying structural parameter and distribution mother tree in the Amhara region. Banja and Guangua districts endowed with tree species such as *Albizia gummifera*, *Croton macrostachyus*, *Prunus africana*, and *Millettia ferruginea*. Some species, such as *Podocarpus falcatus*, *Cordia africana*, and *Juniperus procera*, are found in fragmented and isolated patches [6]. Moreover, natural forests in the Amhara region are highly exploited, but in some places, such as Banja and Guangua districts, natural forests are untouched and can be used for sourcing tree seed. Indigenous tree species provide both ecosystem service and high quality timber as well as medicinal services for local communities; thus, to sustain, this function restoration of degraded forest land is important but the

concern on propagation material is vital for the success of restoration effort [5].

C. africana is used in furniture and musical instrument production, while *J. procera* is also widely utilized and preferred for pole and sawn timber due to its decay resistance and durability [7]. The demand for indigenous tree species is increasing substantially on one hand, and the growth and natural regeneration of the species are very low on the other hand [8]. Farmers and timber traders are reluctant to plant indigenous tree species for several reasons: slow growth rates and long time to financial return, limited propagation and management knowledge, and lack of access to quality seed. Land scarcity for large-canopy species further reduces adoption, while harvest restrictions on indigenous trees discourage commercial planting [9].

To fill this gap, the provision of tree seed is mandatory; thus, this research was conducted [3, 10]. Moreover, natural forest degradation is aggravated by cropland expansion, population growth, and illegal logging. Forest degradation also causes the loss of mother trees which lead to genetic erosion [11, 12]. To help forestry investment effective and tree seed system coast effective, information on the location, species type, and expected quantity of seed that can be collected is very crucial [13]. Assessing and locating mother tree to facilitate tree seed collection is the objective of this study. Further study needed to manage the identified seed sources to improve them to sustainable seed production area (Figure 1).

2 | Materials and Methods

2.1 | Study Area

This study was carried out in Guangua and Banja districts of Awi zone, Amhara region, Ethiopia (Figure 2). The Guangua district is geographically located at 10°52' to 11°03' N and 36°38' to 37°08' E [6].

The study area mainly characterized by mountainous topography and the rainfall ranging from 1200 to 1800 mm, the annual temperature range from 16°C to 22°C. The study area is purposefully selected based on the endowment of intact forest and underutilized for collection of tree seed [14]. The Awi district selected due its endowment with intact natural forest which have a great potential for seed sources establishment.

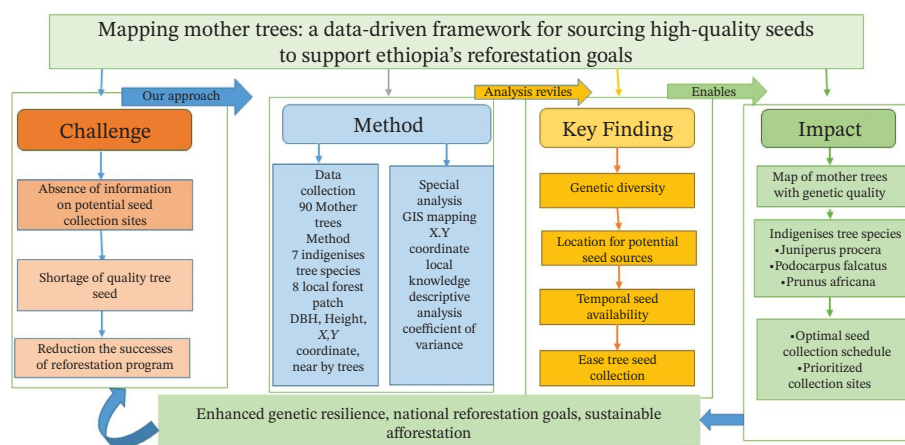


FIGURE 1 | Conceptual framework of the study.

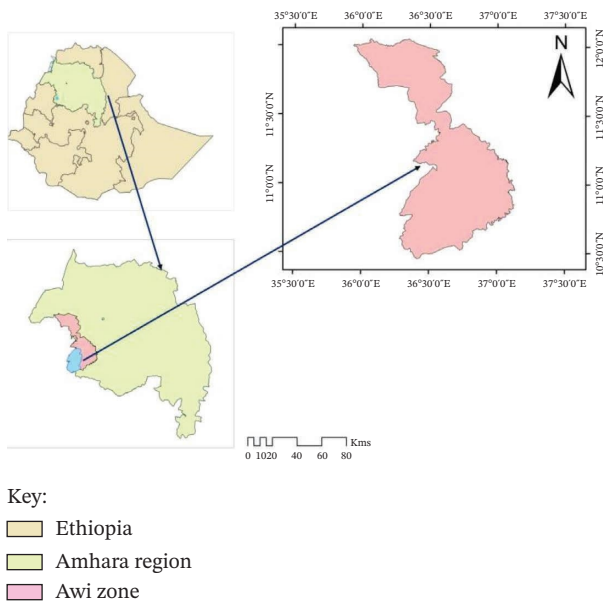


FIGURE 2 | Map of the study area.

2.2 | Sampling and Data Collection

Seed sources from natural forest were selected by following purposively stratified sampling method and mother trees of *A. gummifera* (10 trees) from two districts, *Prunus africana* (10 trees) from two sites, *C. macrostachyus* (10 trees), *Millett ferruginea* (10 trees), *Podocarpus falcatus* (10 trees), *C. africana* (10 trees), and *J. procera* (10 trees) were selected. Mother trees were carefully selected based on phenotypical characteristics and reproductive potential, and we also considered availability of seed and level of IUCN vulnerability while following guidelines of [4, 15]. Targeted tree species were selected for their ecological and economic importance. For example, *C. africana* produces high-quality timber and provides valuable shade for coffee agroforestry, *J. procera* yields termite-resistant wood preferred for church construction, and *M. ferruginea* and *A. gummifera* contribute to nitrogen fixation and soil rehabilitation [16]. Additionally, the critical shortage of quality seeds for these species informed their prioritization. First, 10 individual trees were selected for each of seven target species (70 trees). An additional 20 trees, 10 *A. gummifera* and 10 *P. africana*, were sampled from Askuna Abo and Senkesa forests to better represent these particularly valuable and common species across different spots. The forests in the Awi Zone cover an extensive and continuous landscape across varied topography, so selecting suitable forest patches as seed sources required clear criteria such as accessibility and population dynamics. With these criteria in mind, four seed sources (*A. gummifera*, *M. ferruginea*, *C. africana*, and *P. falcatus*) were selected from Guangua District, while five seed sources (*C. macrostachyus*, *J. procera*, *A. gummifera*, and two *P. africana* patches from different spots) were selected from Banja District. The decision to sample 10 individual trees per species was made to capture structural variability while working within practical constraints of time, budget, and available labor. Finally 90 mother trees were selected and marked from Guangua and Banja districts. Ninety single trees used as sample plot within 9 parallel transect

line separated 500 m. Each transect line include 10 single tree spaced 200 m. And for nearby (Nt) tree enumeration, all trees of the same species were counted within 10 m radius (10-m radius, reflecting typical pollen dispersal distances for Afromontane species) [17], from selected mother tree, Total height (m), diameter at breast height (DBH) (cm), total number of nearby trees of the same species, and X and Y coordinates of all mother trees and nearby tree were recorded. The selection of mother trees followed established criteria for each species. The data underwent descriptive analysis and were presented narratively to provide comprehensive information on the timing and location of seed collection sites, supplemented by a detailed seed source map. Intensive focal group discussions (FGD) and key informant discussions (KID) were conducted, following the methodology outlined by [18]. Three FGDs were organized, comprising forest guards, tree seed collectors, and youths. Based on the information gathered, forests were identified, the time and expected quantity of seed can be collected were estimated, and intensive field observations were conducted to triangulate the information obtained during FGDs and KIDs with ground data. Additionally, data on the expected quantity and timing of seed collection were collected, using Dataset 1 for supplementary information.

2.3 | Data Analysis

The data collected subjected to descriptive analysis to figure out structural diversity among mother trees of different species and forest type. Mean, standard deviation, number of trees observed, computed at 5% critical value coefficient of variance (CV) also used to understand the structural diversity of the species by using Equation (1). For local density analysis, we used simple fixed radius neighborhood by following procedure of [19]. While for spatial distribution analysis generation RStudio (Version 2024.12.1, RStudio Team, 2024) with the dplyr, ggplot2, and ggpubr packages where used finally for a spatial mapping of important mother trees of mother tree distribution QGIS Desktop 3.42.3 was used by integrating a digital elevation model (SRTM 30 m), hillshade, and geographic coordinates. Visual distribution characterized by using the process of data in to QGIS along with cropping digital elevation model to fit the Amhara region and projected in to geographic coordinates of(EPGS:4326). Finally, the map exported with high-resolution image.

$$\text{CV of (DBH)} = \frac{\text{Standard Divation of DBH}}{\text{Mean of DBH}} * 100, \quad (1)$$

$$\text{CV of (Height)} = \frac{\text{Standard Divation of Height}}{\text{Mean of Height}} * 100. \quad (2)$$

3 | Results and Discussion

3.1 | Genetic Diversity of Selected Indigenous Mother Tree Species in Identified Seed Sources

J. procera in Banja District shows the largest mean both in terms of DBH (116.21 ± 37.3 cm) and height (33.82 ± 4.07 m), while *P. falcatus* in Guangua District scores the second largest mean of DBH (94.83 ± 15.1 cm) and height (94.83 ± 15.1 m). *P. africana* in Banja District 2 was the third largest from the characterized

TABLE 1 | Structural diversity and density class of tree species in selected seed sources sites in Awi Zone.

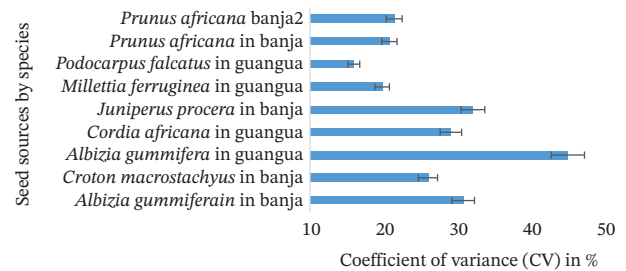
Mother trees selected from different natural forest	Location by districts	Mean DBH (cm)	Mean height (m)	Mean number of nearby trees:	Structural diversity class	Local density class
<i>Albizia gummifera</i>	Banja	40.93 ± 12.6	12.89 ± 1.77	11 ± 5.03	Moderate	Low
<i>Croton macrostachyus</i>	Banja	35.91 ± 9.34	14.41 ± 3.72	8 ± 2.71	Small	Low
<i>Albizia gummifera</i>	Guangua	50.96 ± 22.93	17.48 ± 9.40	12 ± 4.04	Moderate	Moderate
<i>Cordia africana</i>	Guangua	42.1 ± 12.26	13.83 ± 3.27	12 ± 8.73	Small	Moderate
<i>Juniperus procera</i>	Banja	116.21 ± 37.3	33.82 ± 4.07	4 ± 1.32	Moderate	Very low
<i>Millett ferruginea</i>	Guangua	15.87 ± 3.14	10.78 ± 2.14	13 ± 4.76	Small	Moderate
<i>Podocarpus falcatus</i>	Guangua	94.83 ± 15.1	32.28 ± 15.1	6 ± 3.25	Small	Low
<i>Prunus africana</i>	Banja	84.54 ± 17.6	29.71 ± 6.82	4 ± 1.41	Small	Very low
<i>Prunus africana</i>	Banja2	91.98 ± 19.71	29.16 ± 6.27	6 ± 1.87	Small	Low

seed sources by scoring average DBH (91.98 ± 19.71 cm) and height (29.16 ± 6.27 m). Our findings were consistent with the study conducted by Brocheman et al. [20, 21] on natural forest in Awi Zone. Even if these species score the largest average girth and height, the number of neighboring trees species recorded were 4, 6, and 6, respectively, for each species mentioned above which indicates low local density (Table 1).

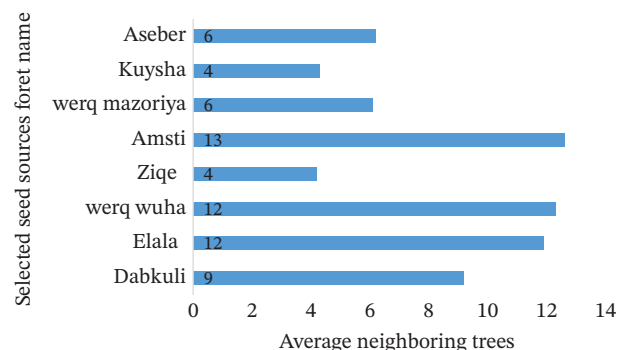
Generally, CV used to characterize the stand structure and evaluate the status of forest in terms of ecological importance and growth condition [22, 23]. The result of our analysis supports utilization of selected tree species in the designated forests as seed sources for scarce indigenous tree species. Tree species with a higher CV value indicate greater structural diversity. According to [23] classification, a CV of less than 30% is considered small, 30%–50% is moderate, and greater than 50% reflects higher structural diversity. Our result fall within the small and moderate structural diversity categories, suggesting that seeds collected from identified mother trees will be reproductively mature and genetically diverse. This is due to the possibility of seed collection from diverse age class. Furthermore, seeds collected for prolonged period due to variation in fruiting times within the same species. Additionally collecting seeds from identified seed sources enables the collection of seeds from different tree species within the same forest.

Higher CV mostly associated with low local density which supports less competition for resources and production of vigorous and large quantity of seed. Availability of high quality and quantity of seed in specific place reduce time and budget invested in tree seed collection. Thus, collecting tree seeds from the selected seed sources are not only effective but also efficient. Furthermore, forest site with high local density leads to higher competition and trigger trees to allocate more energy for growth which results in reduction of seed production. Additionally, tree species with a very low local density can cause shortage of pollen which hider seed development and also favors inbreeding leading to reduction of genetic diversity [24] (Figure 3).

Some species such as *Albizia gummifera* and *C. africana* showed intermediate DBH and height values, with high local densities. While *A. gummifera* in Guangua and Banja districts had an average height of 17.5 and 12.89 m, and diameter of

**FIGURE 3** | Coefficient of variance for selected mother tree species in different districts of Awi Zone.

50.96 cm and 40.93 cm with 12 and 11 nearby trees, respectively (Figures 3 and 4). *C. africana* shows good population connectivity with the record of 12 average nearby trees finally small sized tree species (*C. macrostachyus* and *M. ferruginea*) in the study area showed low and moderate local density with 8 and 13 average nearby trees, respectively, the result also aligned with the result of [25]. For local density categorization by mean of nearby trees, we follow the method used by different scholars such as [26, 27] average nearby trees categorized as 0–4 very low, 5–9 low, 10–18 moderate, 19–30 high, and > 30 very high local density tree species. Importantly, the study highlights urgent on site conservation, and seed source establishment is needed for tree species with very low nearby trees.

**FIGURE 4** | Average nearby trees of selected seed sources from local forests.

3.2 | Expected Quantity of Seed Production From Selected Natural Tree Seed Sources Sites

Seed sources in Elala, Werq Wuha, and Amsti forests are moderately dense while Dabkuli and Werq Mazoria show low local density, and finally forests in Ziqe and Kuysha staked very low level (Table 2). Forests with very low local density may reduce the quantity of seed produced from a specific forest due to small number of same species trees. We highly suggest collecting tree seeds from Elala, Werq Wuha, and Amsti forests to ensure high quality and quantity of seed production. To sustain natural forest tree seed sources in Dabkuli, Werk Mazoria, and Asber forests, urgent enclosure and enrichment planting is needed [24]. Moreover, the forest in this site indicates animal encroachment and selective cutting [28], and intensive management of natural forest will require to enhance the capacity of the forest for tree seed production [29].

Local forest classified with the help of local forestry expert and using indigenous knowledge from elders, tree seed dealers, and youth to provide refined information for tree seed collectors from different stakeholders. Based on the findings from the FGD and KID summary, we provide a comprehensive analysis of the optimal timing for tree seed collection, the anticipated quantity of seeds available for harvest, and the precise locations of the

mother trees. Our results align with those documented by the authors in [30–32].

The seeds of *A. gummifera*, *C. macrostachyus*, and *P. africana* can be collected from March to June at a specific location known as Askuna Abo. Up to 200 kg of *C. africana* can be harvested from a particular forest called Yecheraqa. Additionally, *J. procera* and *M. ferruginea* can be collected from the areas of Ziqe and Amsti Kebele (Table 3).

Selected mother tree in Elala, Werq Wuha, and Amsti forests score moderate average nearby trees which favor production of genetically divers and vigorous tree seed, our result is consistent with other studies conducted in Canada [33]. Moderately, dense forest not only produce high quantity of tree seed but also high quality seeds due to low competition for resources and availability of relatively good number of nearby tree which can produce additional seeds.

3.3 | Spatial Distribution of Mother Trees by Species

In the Awi Zone of the Amhara region, mother trees were charted to show where mother trees are located (Figure 5). The area is rich in species such as *A. gummifera*, *C. africana*, *C. macrostachyus*, *Juniperus procer*, *Militia ferruginea*, *Podocarpus falcatus*, and *P. africana*, as noted by Masresha and Melkamu [34]. Below is a description of the spatial distribution of mother trees of various trees.

TABLE 2 | Local density of selected tree seed sources in different forests.

Selected seed sources local forest name	Mean DBH (Cm)	Mean height (m)	Structural diversity class	Coefficient of variance (cv)	Local density class
Dabkuli	38.42 ± 11.10	13.65 ± 2.94	Small	28.89	Low
Elala	50.96 ± 22.94	17.48 ± 9.41	Moderate	45.02	Moderate
Werq Wuha	42.1 ± 12.26	13.83 ± 3.27	Small	29.12	Moderate
ZIQE	116.21 ± 37.31	33.82 ± 4.07	Moderate	32.11	Very low
AMSTI	15.87 ± 3.14	10.78 ± 2.14	Small	19.79	Moderate
Werq Mazoriya	94.83 ± 15.13	32.28 ± 4.49	Small	15.95	Low
Kuysha	84.54 ± 17.56	29.71 ± 6.82	Small	20.77	Very low
Aseber	91.98 ± 19.71	29.16 ± 6.27	small	21.43	low

TABLE 3 | Estimated amount and time of indigenous tree seed collection in Awi Zone.

Selected mother trees for indigenous tree seed production	Local name of selected tree species	Best time for seed collection	Quant. seed (kg)	District	Kebele (specific location)
<i>Albizia gummifera</i>	Sesa	May - June	200	Banja	Askuna Abo
<i>Albizia gummifera</i>	Sesa	Nov.- Jan.	250	Guangua	Ambiki
<i>Cordia africana</i>	Wanza	Sep.- Nov.	200	Guangua	Yechereqa
<i>Croton macrostachyus</i>	Bisana	Mar. - May	100	Banja	Askuna Abo
<i>Juniperus procera</i>	Yehabesha tid	Jan.- May	300	Banja	Ziqe
<i>Millettia ferruginea</i>	Birbira	Nov.- Jan.	300	Guangua	Amsti
<i>Podocarpus falcatus</i>	Zigba	Dec.- Jan.	150	Guangua	Yechereqa
<i>Prunus africana</i>	Tikur Inchet	Mar.- May	400	Banja	Askuna Abo
<i>Prunus africana</i>	Tikur Inchet	Mar.- may	300	Banja	senksa

Note: Source (FDG and KID).



FIGURE 5 | Spatial distribution of mother trees by species in the Awi Zone.

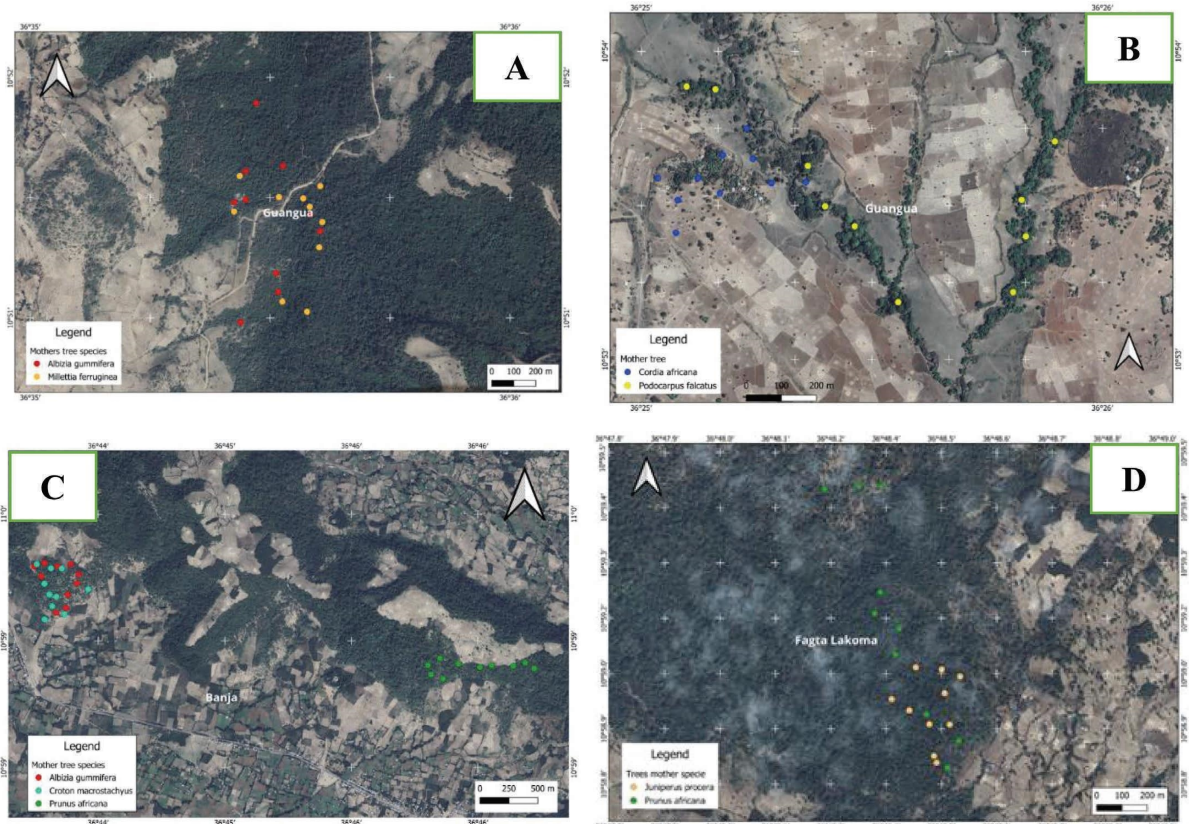


FIGURE 6 | Special distribution of mother trees by districts.



FIGURE 7 | (A) Partial view of identified seed sources, (B) mother trees of *Prunus africana* in Banja District.

In various districts of the Awi Zone, mother trees of different species were mapped (Figure 6) to facilitate the collection of tree seeds by indicating the locations of these specific trees.

A: The spatial distribution of *A. gummifera* (denoted by a red dot) and *M. ferruginea* (represented by a yellow dot) in the Guangua District. B: *C. africana* (indicated by a blue dot) and *P. falcatus* (marked with a yellow dot) in the Guangua District. C: *A. gummifera* (red dot), *C. macrostachyus* (cyan), and *P. africana* (green) in the Banja District. D: *J. procera* (yellow dot) and *P. africana* (Green dot) mother trees in the Banja District (Figure 6). The selected forests were intact and diverse (Figure 7).

4 | Conclusions and Recommendation

This study highlights the suitability of identified seed sources for production of scarce indigenous tree species in Banja and Guangua districts of Amhara Region. Seed sources of *A. gummifera*, *M. ferruginea*, *C. africana*, *P. falcatus*, *A. gummifera*, *C. macrostachyus*, *P. africana*, *J. procera*, and *P. africana* can be established and managed for production of genetically diverse and huge quantity of seeds to support multimillion seedling production to achieve the green legacy initiative massive planting program. The girth and height of *J. procera*, *P. falcatus*, and *P. africana* were among the top largest tree species which indicate the potential of mature tree seed production on one hand, and the low level of local density of the species faces the challenge of sustainability on the other hand. Most identified natural tree seed sources show from low to moderate local density which favor production of genetically vigor tree seed. Thus, to ensure the sustainability of the forest and guaranteeing sustainable tree seed production enrichment planting, livestock management and controlling illegal cutting play a crucial role. The local density of selected seed sources range from very low to moderate which is very good for tree seed collection. The special distribution of mother trees was located, and the expected amount of tree seed produced from the selected seed sources tells that genetically good and economically efficient tree seed production can be ensured if stakeholders in tree seed system focused to collect identified tree species in Banja and Guangua districts.

Acknowledgments

The authors wish to thank the Ethiopian Forestry Development, Bahir Dar Branch, for providing facilities, and CIFOR–ICRAF, Addis Ababa Branch, for their technical support during data collection.

Funding

No funding was received for this manuscript.

Ethics Statement

The authors have nothing to report.

Consent

The authors have nothing to report.

Conflicts of Interest

The authors declare no conflicts of interest.

Data Availability Statement

The data that support the findings of this study are available from the corresponding author upon reasonable request.

References

1. E. Macha, *A Case Study on Ethiopia's Late Prime Minister's Speech About Africa's Role in the Transition to a Green Economy* (LuND Univ, 2019).
2. U. Dangel, *The State of the World's Forests 2020* (FAO and UNEP, 2016).
3. R. Jalonen, M. Valette, D. Boshier, J. Duminil, and E. Thomas, "Forest and Landscape Restoration Severely Constrained by a Lack of Attention to the Quantity and Quality of Tree Seed: Insights From a Global Survey," *Conservation Letters*, 11, no. 4 (Wiley-Blackwell, 2018), e12424, <https://doi.org/10.1111/conl.12424>.
4. J. P. B. Lillesø, C. Harwood, A. Derero, et al., "Why Institutional Environments for Agroforestry Seed Systems Matter," *Development Policy Review* 36, no. S1 (March 2018): 089–0112, <https://doi.org/10.1111/dpr.12233>.
5. A. V. de Aguiar, M. S. Wrege, V. A. de Sousa, B. de Souza, and M. T. G. Lopes, "Tree Species Diversity as a Function of Environmental Conditions in Potential Seed Collection Areas in Amhara Region, Ethiopia," in *European Conference of Tropical Ecology* (Sofia, Bulgaria: Pensoft Publishers, 2024).
6. G. Gebeyehu, T. Soromessa, T. Bekele, and D. Teketay, "Species Composition, Stand Structure, and Regeneration Status of Tree Species in Dry Afromontane Forests of Awi Zone, Northwestern Ethiopia," *Ecosystem Health and Sustainability* 5, no. 1 (2019): 199–215, <https://doi.org/10.1080/20964129.2019.1664938>.
7. G. Alemayehu, Z. Asfaw, E. Kelbessa, B. Management, P. O. Box, and A. Ababa, "*Cordia africana* (Boraginaceae) in Ethiopia: A Review on Its Taxonomy, Distribution, Ethnobotany and Conservation Status," *International Journal of Botany Studies* 1, no. 2 (2016): 38–46.

8. G. Getachew and Z. Asfaw, "Status of Native Tree Diversity in Relation to Land-Use in the Merhabete District, Ethiopia," *Journal of Landscape Ecology* 16, no. 3 (December 2023): 1–19, <https://doi.org/10.2478/JLECOL-2023-0014>.
9. Y. G. Keneni, A. F. Senbeta, and G. Sime, "Role of Small-Scale Trees Plantation and Farmers' Attitude and Skill Toward Propagation of Indigenous And Exotic Trees: The Case of Sidama, Ethiopia," *African Journal of Food, Agriculture, Nutrition and Development* 21, no. 105 (2021): 18804–18823, <https://doi.org/10.18697/AJFAND.105.19045>.
10. M. Lemenih and H. Kassa, "Re-Greening Ethiopia: History, Challenges and Lessons," *Journal of Environmental Psychology* 5, no. 8 (July 2014): 1896–1909, <https://doi.org/10.3390/F5081896>.
11. A. Ayanaw Abunie and G. Dalle, "Woody Species Diversity, Structure, and Regeneration Status of Yemrehane Kirstos Church Forest of Lasta Woreda, North Wollo Zone, Amhara Region, Ethiopia," *International Journal of Forest Research* 2018 (2018): 1–8, <https://doi.org/10.1155/2018/5302523>.
12. F. Mequanint, A. Wassie, S. Aynalem, et al., "Biodiversity Conservation in the Sacred Groves of North-West Ethiopia: Diversity and Community Structure of Woody Species," *Global Ecology and Conservation* 24 (2020): e01377, <https://doi.org/10.1016/j.gecco.2020.e01377>.
13. *The State of the World's Forests 2020* (FAO and UNEP, 2020).
14. A. Wassie and B. Dar, *Forest Resources in Amhara: Brief Description, Distribution and Status* (Bahir Dar: International Publishing, 2017).
15. *Ethiopia* (Addis Ababa, 2012).
16. L. Negash, *Indigenous Trees of Ethiopia: Biology, Uses and Propagation Techniques* (Addis Ababa University, 1995).
17. T. Gidey, D. Hagos, H. Juhar, et al., "Population Status of *Boswellia papyrifera* Woodland and Prioritizing Its Conservation Interventions Using multi-criteria Decision Model in Northern Ethiopia," *Cell.Com* (2020).
18. G. Girma, Y. Melka, A. Hailelassie, and W. Mekuria, "Participatory Forest Management for Improving Livelihood Assets and Mitigating Forest Degradation: Lesson Drawn From the Central Rift Valley, Ethiopia," *Current Research in Environmental Sustainability* 5 (2023): 100205, <https://doi.org/10.1016/j.crsust.2022.100205>.
19. S. Hubbell, (1999), Light-Gap Disturbances, Recruitment Limitation, and Tree Diversity in a Neotropical Forest.
20. C. Brochmann, A. Gizaw, D. Chala, et al., "History and Evolution of the Afroalpine Flora: in the Footsteps of Olov Hedberg," *Alpine Botany* 132, no. 1 (2022): 65–87, <https://doi.org/10.1007/s00035-021-00256-9>.
21. O. Hedberg, "Features of Afroalpine Plant Ecology," *Acta Phytogeographica Suecica* 49 (1964): 150.
22. N. L. Lexerød and T. Eid, "Assessing Suitability for Selective Cutting Using a Stand Level Index," *Forest Ecology and Management* 237, no. 1-3 (December 2006): 503–512, <https://doi.org/10.1016/j.foreco.2006.09.071>.
23. C. Canham, W. Ruscoe, T. C. Scientific, and E. F. Wright, "Spatial and Temporal Variation in Tree Seed Production and Dispersal in a New-Zealand Temperate Rainforest Spatial and Temporal Variation in Tree Seed Production and Dispersal in a New Zealand Temperate Rainforest," *Ecosphere* 5, no. 4 (2014): 1–14, <https://doi.org/10.1890/es13-00384.1>.
24. J. Ghazoul, "Pollen and Seed Dispersal Among Dispersed Plants," *Biological Reviews* 80 (2005): 413–443, <https://doi.org/10.1017/S1464793105006731>.
25. B. Workayehu, D. Fitamo, F. Kebede, L. Birhanu, and A. Fassil, "Floristic Composition, Diversity, and Vegetation Structure of Woody Species in Kahitassa Forest, Northwestern Ethiopia," *International Journal of Forest Research* 2022 (2022): 1–12, <https://doi.org/10.1155/2022/7653465>.
26. M. Poorter, M. T. van der Sande, J. Thompson, et al., "Diversity Enhances Carbon Storage in Tropical Forests," *Global Ecology and Biogeography* 24, no. 11 (2015): 1314–1328, <https://doi.org/10.1111/geb.12364>.
27. R. L. Chazdon, S. G. Letcher, M. Van Breugel, M. Martínez-Ramos, F. Bongers, and B. Finegan, "Rates of Change in Tree Communities of Secondary Neotropical Forests Following Major Disturbances," *Philosophical Transactions of the Royal Society B: Biological Sciences* 362, no. 1478 (2007): 273–289, <https://doi.org/10.1098/rstb.2006.1990>.
28. R. Aguilar and L. Galetto, "Effects of Forest Fragmentation on Male and Female Reproductive Success in *Cestrum parqui* (Solanaceae)," *Population Ecology* 138, no. 4 (May 2014): 513–520, <https://doi.org/10.1007/s00442-003-1451-9>.
29. A. W. Æ. David, W. Æ. Mark, and S. D. Johnson, "Seed Production in a Threatened Aloe is Not Affected by Bird Exclusion or Population Size Seed Production in a Threatened Aloe is Not Affected by Bird Exclusion or Population Size," *Plant Ecology* 203 (May 2014): 173–182, <https://doi.org/10.1007/s11258-008-9524-9>.
30. S. A. Orwa C, A. Mutua, R. Kindt, and R. Jamnadass, "*Juniperus procera* Cedar," *Agroforestry Database* 0 (2009): 1–5.
31. Orwa, "*Prunus africana* (Hook. f.) Kalkman Rosaceae *Prunus africana* (Hook. f.) Kalkman," *Agrofor. Database* 4, no. 0 (2009): 1–5.
32. B. Lam mukumari, *Cordia africana*, 0 (2009), 1–5.
33. L. Salmon, J. A. Kershaw, A. R. Taylor, M. Krasowski, and M. B. Lavigne, "Exploring Factors Influencing Species Natural Regeneration Response Following Harvesting in the Acadian Forests of New Brunswick," *Open Journal of Forestry* 06, no. 03 (2016): 199–215, <https://doi.org/10.4236/ojfor.2016.63017>.
34. G. Masresha and Y. Melkamu, "The Status of Dry Evergreen Afro-montane Forest Patches in Amhara National Regional State, Ethiopia," *International Journal of Financial Research* 2022 (2022): 1–11, <https://doi.org/10.1155/2022/8071761>.